

Architectural & Builders Magazine

Vol-13 Issue-02 June-2025
www.abmagazine.in



Experion Elements



Mr. BK Malagi, Vice Chairman
Experion Developers
(Page No. 36)



Publisher
Blitz
Media

Media Partner
ace
TECH

BUILDON
Think Options • Think Builders

mozart
THE TILE COMPOSER

Supreme Creation

MITSUBISHI ELECTRIC
Changes for the Better
AIR CONDITIONERS

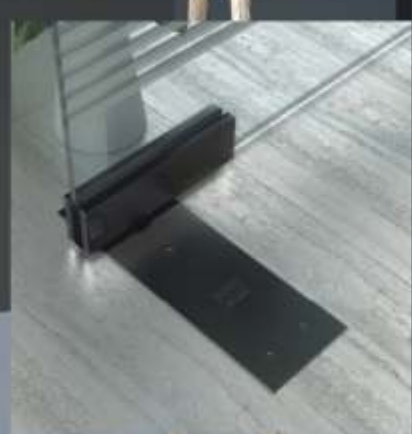
MARMO SOLUTIONS
Marble & Tile Solution Products

TATA
TATA POWER
GZ HOME


ORBIT
WIRES & CABLES


BLACK^{Finish}


ENOX **E**
ASSA ABLOY



Seamless closure.
Precise control.
Style in Black

 Enox authorized channel partner or company representative

 For Product Information :- +91 95699 85983

 customer_enquiry.india@assaabloy.com.



www.enox.in

The Future of Home Automation

● Retrofit ● No Rewiring Needed ● Easy Installation



15k+
Installations



Voice Control
Alexa - Google Home
Siri - Smart Things



App Control
iOS - Android
Web



3rd Party Integration


Complete Home Automation

● Touch Switches ● Smart Devices ● RGBW Controller ● IR Blaster
● Curtain Controller ● Scene Controller ● Door Lock Controller

INDIA'S LEADING

Home Automation Brand



Smart Node Home Automation



Thinking of.....

SAFETY SIGNAGES & EMERGENCY LED LIGHTS ?



In case of fire

DO NOT use lift



Use the stairs



Switch off mobile phones, pagers, cameras etc.

Fire hose



Push to open

FIRE EXIT



**Supreme
Creation**
SAFETY SIGNAGES

Light when you needed...

D/001, Samarth Krupa,
Near Western Express Highway,
Akurli Road, Kandivali (E)
M u m b a i 4 0 0 1 0 1



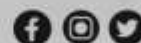
+91 91522 00534 / 9152206447



info.supremecreation@gmail.com



www.supremecreation.in



The Next Decade of Architecture – Designing for Climate Resilience

As India grapples with rising temperatures, erratic monsoons, and depleting water tables, the next decade in architecture must prioritize climate resilience over mere aesthetics. Our buildings, which consume 40% of the nation's energy, must evolve into self-sustaining ecosystems. This is not a luxury-it's a necessity.

The real estate sector, especially in urban India, continues to expand rapidly. Yet, glass towers and energy-hungry HVAC systems dominate skylines, ignoring regional climates and traditional wisdom. The path forward lies in blending vernacular design principles-like courtyards, jaalis and passive ventilation-with modern technology and sustainable materials.

Architects and developers must lead with foresight. Net-zero buildings, water-positive campuses, and community-centered layouts aren't future ideals-they must be present realities. Government policies like ECBC (Energy Conservation Building Code) and the push for green ratings are encouraging, but widespread adoption requires deeper collaboration between architects, urban planners, and local authorities.

In the coming decade, resilience will not be judged by strength alone, but by adaptability, sustainability, and inclusivity. India's architectural identity must shift from reactive to regenerative-building not just for today, but for a climate-uncertain tomorrow. The time to rethink how we design, build, and live is now.

This rethinking must also extend to how we educate the next generation of architects and designers. Architectural curricula in India need to embed climate science, environmental psychology, and circular economy principles at their core. Design studios must move beyond form-making to problem-solving-encouraging students to address real-world challenges of heat stress, water scarcity, and equitable housing. Furthermore, material innovation-from low-carbon concrete to bio-based alternatives-should be a priority in research and practice. Collaboration with environmental engineers, sociologists and ecologists is no longer optional; it's essential. A resilient built environment will only emerge when design thinking is interdisciplinary, inclusive and rooted in place.



Content Editor : Manish Badlani
Email: manish@blitzmedia.in

Consulting Editor : Ar. Kritika Juneja
Email: kritika@blitzmedia.in

Marketing & Sales Team

National Head : Vishal Thakur
Email : vishal@blitzmedia.in

Product Head : Manmeet Kaur

Sales Team :

Ritesh Gupta
Sahil Maurya
Kanchan Kale
Deepali Roy
Akash Yadav

Published & Printed By:
Blitz Media Private Limited
Corp Office: 411, Omkar Prathana
Koldongri Sahar Road Andheri (E)
Mumbai - 400069 Tel: 7700077932
Website: www.abmagazine.in

For Enquiries Contact
Mobile: 9967487952 / 9594301666
E-mail: info@blitzmedia.in

Publisher
**Blitz
Media**



/abmagazineonline

/abmbloitonline

/company/abmagazineonline/

/abmagazineonline/

9594301666

@abmagazineonline

For Magazine Subscription
E-mail: subscription@blitzmedia.in

For Soft Copy & E-book
Whatsapp-9594301666



WEATHER COOL SALES PVT LTD

Complete HVAC Solutions.



No.1
Dealer for

DAIKIN

**MODULAR
CHILLERS**

Why should you as an architect choose
MODULAR DAIKIN CHILLERS

5 Features



Easy Maintainance



Durable



Space optimization



Limitless Length



Seamless Installation
by WCS





No Leakage

**UPVC AND
CPVC PIPES**

That last longer &
doesn't corrode



For Sales Inquiry [ +91 9930212452 / +91 8657237322
[ sales4@weathercoolsales.com]

Turn to page 64 for more information on modular chillers.

Scan the QR Code to visit our website

www.weathercoolsales.com



STYLE THAT STANDS STRONG

KingSeam Roof Panel: A perfect blend of strength and efficiency

Key Benefits

- High thermal performance
- Secret-fix joinery
- Trapezoidal rib design
- Weathertight performance
- Roof slope as low as 1 in 20



"At Kingspan Jindal, we pride ourselves on delivering world-class insulated panel solutions, crafted with our cutting-edge technology and uncompromising quality assurance. KingSeam is one such innovation, redefining roofing solutions."

Mr. Pradeep Tewari, Senior Director



To know more
scan the QR code:



+91 7065 275 454



sales@kingspanjindal.com



**WE ARE
PLANET
PASSIONATE**





Conduct with Might Contain It Right

Engineered for high-voltage performance, Orbit wires and cables ensure unmatched conductivity, control, and durability.



Scan here
to visit

www.orbitcables.com

Follow Us On | [@orbitcablesofficial](#) | [Orbit Cables](#)

Orbit Wires India Limited

Survey No. 2450, Near Skoda Tube Ahmedabad - Mehsana Highway,
Village-Rajpur, Mahesana, TalukaKadi, Gujarat - 382705.

ORBIT[®]
THE POWER OF PEOPLE





Mr. Shailandra Yadav - Founder & CEO

Vantage India Pvt. Ltd. is among the pioneering brands for Architectural Products and Services for commercial interior spaces. Our products are essential elements for modern, beautiful and functional workspace environments. We assist Architects and Designers by providing a wide range of solutions for each individual project.

+91 99303 16425

info@vantageindia.in

www.vantageindia.in

Office No. 336, 3rd Floor, V-Mall, Off. Western Express Highway,
Thakur Complex, Kandivali (East), Mumbai - 400 101, Maharashtra, India.

Landscape Redefined

K-LITE



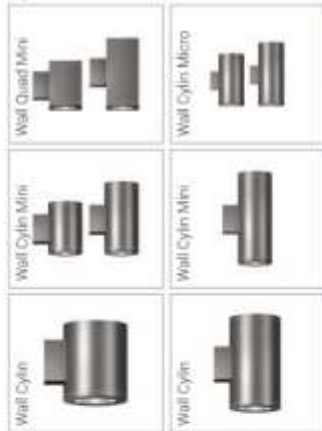
Flood Light Series



Path Finder Series



Up Down Series



Decorative Bollards



In-Ground Series



Jado Wood Bollards



Nebula Series



Elements Series



K-LITE
K-LITE INDUSTRIES PVT.LTD

D-10, Ambattur Industrial Estate,
Chennai - 600 058.

Tel : 26257710, 48581950

Cell : 95000 79797, 95000 85511

Email : info@klite.in

Website : www.klite.in



Contents

Architects	24
Furnitures	26
Window Blinds	28
Builders	36
Gypsum Boards	44
Switches / Automation ...	48
Hardware & Locks	58
Automatic Glass Doors .	63
Security Control Eqpt	68
Fans Electric	69
Air Conditioners	71
Kitchen Sinks	77
Doors & Windows	88
Modular Kitchens	89
Led Lights	92
Cables & Wires	99
Tiles	100
Paints	101
Elevators & Lifts	103
Exhibitors	108
Signages	116
Health Club Eqpts	117
Advertisers Index	121
Subscription	122



Architectural & Builders Magazine | Blitz Media

MEDIA PARTNERS

**Design 2025
Mumbai**
India's international
contemporary design show



HIGH EARLY STRENGTH

R COHESION GREEN PRODUCT

MOST DURABLE

CHEMICAL RESISTANCE

QUICK SETTING

HIGH

CAL RESISTANCE

GH

CO

Z

P

S

EN

Scan to see



JSW Cement

come alive !



SUPERIOR COHESION

HIGH EARLY ST

CHEMICAL RESISTANCE

MOST D

1800 266 266 1

JSW Cement
Start Strong. Grow Stronger.

World's #1
eco-friendly
cement company

Luxury

WOODEN DOORS MANUFACTURER



MADE FOR GENERATIONS, TRUSTED GLOBALLY.



8ft

AND ABOVE

More Than Manufacturing
A Legacy of Quality.

At Rochana Industries, we bring over two decades of expertise in creating luxury doors that blend design, quality, and innovation. With an initial 25+ years of experience in Dubai, we have now expanded to Hyderabad, establishing a state-of-the-art manufacturing unit just 12 minutes from Hyderabad International Airport.

Our cutting-edge production facility is equipped with world-class machinery and patented technology, allowing us to deliver exceptional products at unmatched speed.

Rochana Industries Private Limited



14001 : 2015



45001 : 2018



9001 : 2015



+91 72220 56999

Plot No: 23/B, Hardware Park, Hyderabad,
Telangana, 501510. info@rochanaindustries.com
www.rochanaindustries.com

SYNGIRO

Sliding

Suitable for various settings,
including wardrobes, room dividers, and office partitions.

- Effortless Operation • Space Efficiency • Aesthetic Appeal • Versatility



Providing:



Pivot Door



Swing Door



Partition
Solutions



Acoustic
Partitions



Shower
Cubical



Sliding
Solutions



360°
Pivot Door



Sliding & Folding
Solutions



Wardrobe
Doors



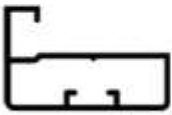
Integrated Door-
Wall Systems



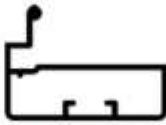
**NEW
ARRIVAL**



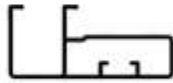
KITCHEN PROFILES



TAK-SP-45
45 MM Side Profile



TAK-IH-45
45 MM I Handle



TAK-GH-45
45 MM O Handle



TAK-SP-20
20 MM Side Profile



TAK-IH-20
20 MM I Handle



TAK-L-CNTR
L Connector

LINKAGE INTER MOVING DOORS

THREE LINKAGE MOVING DOOR

Both Sides Slide



FOUR LINKAGE MOVING DOOR

Both Sides Slide



ENQUIRY NOW





VINYORK

Discover the Artistry of Leather

WHO WE ARE



We are passionate artisans dedicated to transforming genuine leather into timeless pieces of beauty and comfort. Founded on principles of craftsmanship, quality, and sustainability, we create furniture that elevates spaces and enriches lives. Our journey is rooted in a commitment to excellence, where each piece of leathers hand selected and meticulously finished to reveal its natural beauty.



WHY CHOOSE GENUINE LEATHER



Genuine leather has long been the hallmark of premium furniture, cherished for its unique character and unparalleled durability. Each piece of our leather is hand-selected and carefully finished to highlight its natural beauty, ensuring that every creation is a masterpiece of craftsmanship.



FOR CATALOGUE ENQUIRY | +91 96299 11194

FOR MORE DETAILS EXPLORE OUR WEB SITE | VINYORK.COM

+91 90250 03107 / +91 63699 39320

info@Vinyork.com

[Vinyork Leather Works](https://www.facebook.com/VinyorkLeatherWorks)

[vinyork_leather_works](https://www.instagram.com/vinyork_leather_works)

📍 PAN INDIA WAREHOUSE

Site No- 102 & 112, Ground Floor,
5th Cross, Chamundeswari Layout,
Bettadasanpura Village, Next To Thogur Cross,
Electronic City Phase - 1, Bangalore - 560100.



SCAN FOR CATALOGUE



THE LARGEST TRADE-FAIR ORGANIZER IN INDIA

Established in the year 1993, ABEC Exhibitions & Conferences Private Limited (ABEC), is a **major player in the Indian Exhibition Market**. Currently, it is the largest private sector organizer in the industry with approximately 10% market share.

The company has a singular motto - **From Concept to Completion**; and believes in delivering end-to-end marketing solutions to keep its clients in the forefront of market trends. Giving them an edge over others in their respective industry segments. With more than 2 decades of rich experience, the company has redefined the industry standards by providing its clients with an access to global distribution networks through its well-organized and widely-marketed events.

TODAY'S ABEC'S MARKET CAP IS OVER 800 CRORES MAKING IT THE LARGEST TRADE-FAIR COMPANY IN THE INDIA SUB CONTINENT WITH A STAFF STRENGTH OF OVER 500+ AND OFFICES IN MUMBAI, DELHI, BENGALURU.

TRADE FAIRS • CONFERENCES • ACTIVATIONS • ROADSHOWS • DIGITAL • BOOTH FABRICATION



Join ABEC's winning team

for surging ahead in the Indian Exhibition story by **creating world-class business platforms** that provide marketing solutions to over 5000 global brands per year, this helping them grow their businesses via International Trade Fairs !

MUMBAI (Corporate Office)

530, Laxmi Plaza, Laxmi Industrial Estate,
New Link Road, Andheri (W),
Mumbai - 400053, India.

DELHI

510, 5th floor, Ansal Bhawan, KG
Marg, New Delhi - 11000

BENGALURU

Unit No. 1004, 10th Floor,
B Wing, Mittal Towers,
MG Road, Bangalore - 560 001,
India.

Website: acetecheexpo.com

Email: productivity@abec.asia

INDIA'S FIRST GLOBAL
**ARCHITECTURE,
BUILD & DESIGN
EXPO**

**ACE
REFLECT**

**365 DAYS WORTH OF
CONNECTIONS IN
3 DAYS**

UPCOMING SHOWS

AHMEDABAD

7-9 MAR 2025

HELIPAD EXHIBITION
CENTRE

INDORE

9-11 MAY 2025

BRILLIANT CONVENTION
CENTRE

CHENNAI

30-31 MAY & 1 JUN 2025

CHENNAI TRADE
CENTRE

RAIPUR

20-22 JUN 2025

HOTEL BABYLON
INTERNATIONAL

JAIPUR

18-20 JUL 2025

JAIPUR EXHIBITION &
CONVENTION CENTRE (JECC)

COIMBATORE

22-24 AUG 2025

CODISSA TRADE FAIR
(HALL A)

SEGMENTS : ARCHITECTURAL & DECORATIVE LIGHTING • DOORS & WINDOWS • NATURAL & ENGINEERED MARBLE • TILES & CERAMICS • AIR-CONDITIONING & REFRIGERATION • PAINTS • BATH & SANITATION • COATS & WALL COVERING • HOME & OFFICE AUTOMATION • SAFETY • SECURITY & FIRE PROTECTION • INTERNATIONAL KITCHEN • PLUMBING • PIPES & FITTING GLASS • GLAZING & FACADES • STEEL & CONCRETE • SWITCHES & SWITCHGEAR • ELECTRICALS • WIRE & CABLES • INTERNATIONAL FURNITURE • VENEERS & FLOORINGS • ROOFING & CLADDING • WOOD • KITCHEN TECHNOLOGIES • ELEVATORS & ESCALATORS • WATER TECHNOLOGIES & MANY MORE...



www.acerelect.com



[acerelect](https://www.facebook.com/acerelect)



[ace.reflect](https://www.instagram.com/ace.reflect)

CONNECT WITH US: SHAMSHER ALI: +91 93245 53996 | GURPRIT SINGH: +91 98670 18468

ace
TECH
INITIATIVE

EVENT ORGANIZED BY
ABEC

Featherlite®

High Performance Education Furniture



Xenon Loop Classroom Seating

**INDIA
DESIGN
MARK**
awarded in 2024



Library Furniture



Soft Seating



Hostel Furniture

Now available on  **GeM**
Government e Marketplace



080 4719 1010



sales@featherlitefurniture.com

Present in **66 locations** across India, also in **Nepal, Sri Lanka, Philippines** and **U.A.E.**
For more details visit our website  www.featherlitefurniture.com



KITCHEN FITTINGS



MAKES THE
WORLD GO **O**



ELECTRONIC GLASS
SHELF ELEVATOR



SLIM PRO GLASS WITH LED
DRAWER SYSTEM



UNIVERSAL
MAGIC CORNER



KITCHEN
TALL UNIT



MULTIFUNCTIONAL
PULL-OUT



+91 93100 12300
customercare@ozone.in



SCAN
QR CODE
TO WATCH
AD FILM

V-Can 'Italiano' Door system



V-Can 'Italiano' is factory finished, ready to install Door system consisting of Door Jamb, Door Shutter, Architraves & Hardware.



V-Can door systems are available in following variants:

► V-Can Italiano door systems

Exclusive Panel & Flush Door designs in exquisite finishes.

► V-Can FireSafe door systems

As per IS:3614 with Fire rating of 120/90/60 minutes.

► V-Can AquaSafe door systems

Highly water resistant for wet & external areas.

► V-Can SoundSafe door systems

For acoustical requirements.



V-Can door system is manufactured with state-of-the-art European machines. It has distinct PUR advantage. PUR is completely water proof & environment friendly adhesive. It can with stand temperature variation from -30°C to +150°C

- Exclusive designs & exquisite finishes in Foils, Laminates & Veneers
- Custom made in non-standard sizes, available upto 12' in height
- Solution for Single leaf, Double leaf, Sliding, Bi-fold, Glass panel, Louvered Door systems

☎ 97024 39005 | 97027 20001

✉ sales@vcan.co



Acoustics and Design

Get the best of both worlds

Let acoustic excellence meet architectural elegance with **Saint-Gobain Ecophon Solo™**

Key benefits at a glance



Versatile customizable designs



Sustainable high-performance acoustics



Easy installation



Visual & acoustic harmony

Certifications



Explore the full range of **Ecophon Solo™**



Solo™
Circle

Solo™
Square

Solo™
Rectangle

Solo™
Triangle

Solo™
Hexagon

Solo™
Baffle

Solo™
Baffle Wave

Solo™
Baffle Zig Zag

Solo™
Freedom



Reach out to us on
Gyprocceilings.marketing@saint-gobain.com



**Better ceilings.
Better spaces.**

Crompton

Lighting

Buildings speak. But only when we let them.

Through every archway, every silhouette against the skyline, every quiet corridor—building tells a story. Its design is a dialogue of form, space, and purpose. But too often, that dialogue dims after sunset. The beauty we craft fades into darkness. Spaces go silent—unaware, unfeeling, unlit.

That's where light steps in—not just to illuminate, but to enhance.

Ambience with
Artful Illumination

Crompton's 
ALIATH
Façade Lighting



Aliath brings buildings to life after dark.

Engineered for large-scale outdoor illumination, Aliath combines powerful brightness with energy efficiency to increase visibility and accentuate every line, curve, and material. Whether it is wall grazing, flood lighting, wall washing, burial lighting, or general illumination, these lights deliver stunning visual effects with minimal light spill and sharp edge definition.

Its wide beam spread and smart tilt adjustment make focusing effortless—no remote needed. Built with advanced optics, thermal efficiency, and a sturdy build that stands up to any weather, Aliath ensures your structure shines with brilliance and reliability, night after night.

Crompton

Lighting



And once the exterior sets the stage with grandeur and glow...
the story must continue within.

A grand entrance deserves more than just design—it deserves a response. The spaces we walk through should feel aware of our presence. Welcoming when we arrive, guiding as we move, and glowing with purpose.

SensoRange

Smart Illumination
that moves with you



In-built
Occupancy
Sensor



Sense Range:
2-7 Mtr.



Sense Time:
Instant ON



Sense Type:
Movement



Waiting Time
Dim Mode:
60-180 ±30 Sec.



Mounting:
Ceiling / Wall



70%
Saving

SensoRange's advanced microwave sensor technology detects movement within a 120° range and responds in real-time. No switches. No delay. Just seamless interaction. When someone enters, lights with SensoRange instantly brighten to 100%, creating a welcoming, well-lit atmosphere. And when the space is empty, it gently dims to 30%, maintaining a soft glow that ensures safety while saving energy.

Built with high-efficacy lighting (100 Lms/W), superior power factor (>0.95), and surge protection up to 4kV, SensoRange is as reliable as it is responsive. Because your space should never fall silent.

Comfort, quietly

Spin, shift, for moving out loud

Ah! Quiet again.



Make room for the **Asari Chair**—upholstered, ergonomic, and a delight to the senses. It provides the performance of a work chair, in a form that is as comfortable as it is beautiful. Get to know the new soft office seating.

hermanmiller.com/asari



Scan to discover

CITIZEN - THE NAME SYNONYMOUS WITH TRUST



citizen

a member of **DAIKIN** group



Easy
Installation



Quick
Delivery



Standard and
Customised Units



Energy Efficient
Products



High Quality
Standards



Reliable
Solutions



Pan India
Service



AHU & SMART AHU



FAN COIL UNIT (FCU)



AIR WASHER & AIR SCRUBBER



CITIZEN INDUSTRIES PRIVATE LIMITED (FORMERLY KNOWN AS CITIZEN INDUSTRIES LIMITED)

Regd. Office: 1002 & 1003, 10th Floor, A-Wing, Commerce House-S, Besides Vodafone House, Corporate Road, Prahladnagar, Ahmedabad 380051, Gujarat, India.

Mfg. Works: Santej (Ahmedabad) & Hoskote (Bengaluru)

Sales & Service Network: Ahmedabad • Mumbai • Pune • Bengaluru • Hyderabad • Chennai • Kolkata • Delhi • Chandigarh

sales@citizenindustries.in | www.citizenindustries.in | Phone: +91 79 40013100



For more information
scan the QR Code

Marble as Muse: A Bengaluru Home that layers texture, form and luxury by Studio GSA



Santosh Belani & Gaurav Panjwani

Studio GSA

Project : Peter's Playground

Location : Bengaluru

Area : 4050 Sqft



Creating a house for a client thoroughly immersed in the marble universe presents a unique creative challenge. In this house, marble is not merely a material—it's the essence of the space. From the instant one enters the lift foyer, where one is welcomed by a sculptural marble feature wall and wood accents, the house establishes an elegant tone. The black-inlaid white marble flooring of the foyer, veneered storage, and ornate mirror layer add elegance to functionality.

Throughout, marble is complemented by warm textures—fluted wood panels, leather sofas and metallic details. In the dining room, detailed inlay replicates a carpet and the family room has a television wall covered with relief



marble. The formal living room has a hidden bar in silver river marble and stools with Indian motifs, combining heritage with luxury.

Every bathroom delves into tactile contrast with fluted, lapatro, and leather-finish marbles. The kitchen makes a dramatic statement with blazing red marble slabs, chosen for their distinctive veining. Bedrooms mirror individual tastes—from peaceful beiges to whimsical blue onyx.

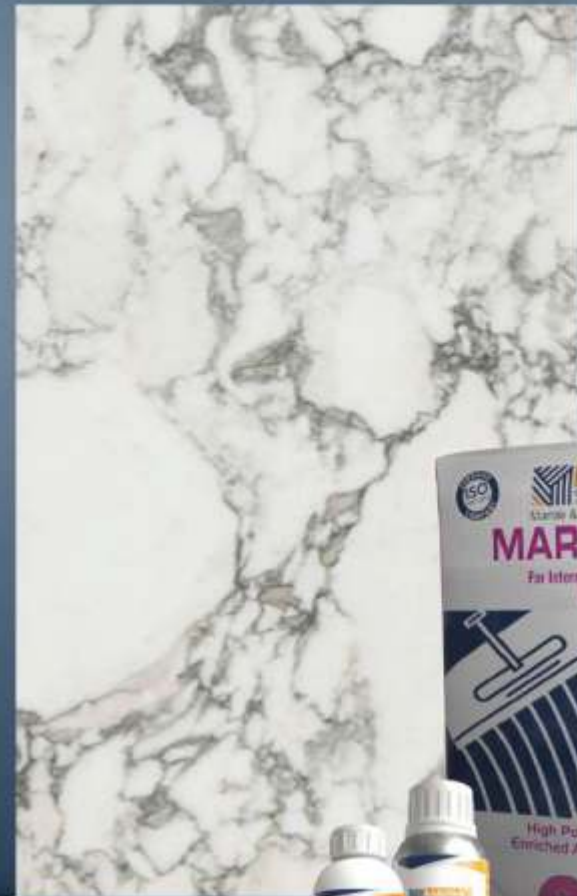
This house honors marble's versatility, employing it with restraint and sophistication. Every element testifies to craftsmanship and a refined design language—where tradition harmonizes with modern living in effortless ease.





SCAN TO
FOLLOW US

देश का मजबूत ADHESIVE



INCREASING **STRENGTH & DURABILITY**
OF NATURAL MARBLES & TILES

ADHESIVE | GROUTS | FILLERS | WATER-PROOFING | SEALERS | SHINERS | CLEANERS

MUMBAI

Shop No. 47a, Ground And First Floor,
Parmar Compound, Highway Road, Vile Parle East,
Mumbai - 400099



SCAN TO FOLLOW US

DELHI

WHS, 1/18, 2nd Floor Kirti Nagar,
Near Richi Rich Banquet, New Delhi - 110 015

+91 11 40586081

Enhance and preserve
the beauty of marble and tiles
with our premium chemical
solutions. From screeding to
sealers, trust our expertise
for perfection.

देश का मजबूत
ADHESIVE



ADHESIVE | GROUTS | FILLERS | WATER-PROOFING | SEALERS | SHINERS | CLEANERS

MUMBAI

Shop No. 47a, Ground And First Floor,
Parmar Compound, Highway Road, Vile Parle East,
Mumbai - 400099



SCAN TO FOLLOW US

DELHI

WHS, 1/18, 2nd Floor Kirti Nagar,
Near Richi Rich Banquet, New Delhi - 110 015

+91 11 40586081

Elevated Elegance: A Bungalow that Breathes Luxury in Manesar



Ar. Jaideep Thareja

Jaideep Thareja Architects

Project : Luxury Bungalow

Location : Manesar

In the pulsating heart of Manesar, this opulent three-storey bungalow by Jaideep Thareja Architects is a masterclass in spatial harmony and quiet sophistication. Every design element speaks the language of grandeur without excess. The double-height living room, bathed in natural light through sheer, full-length drapes, becomes the centrepiece of the home. A sculptural chandelier, spiralling down in crystalline tiers, cascades over a low-slung onyx centre table, orchestrating a visual rhythm of light, form, and function.

Curated in a warm palette of taupe, beige and champagne gold, the interiors exude a timeless, global appeal. The

furniture-plush yet linear-mirrors the architectural sensibilities of the house: expansive, yet deeply personal. With rich materiality, including marble flooring, textured fabric panels, and brass inlays, the design elevates each room into a refined sanctuary.

This project isn't just a residence; it's a study in elevated living, where architecture and interiors converse fluently. It reflects Jaideep Thareja Architects' commitment to crafting homes that are not only structurally sound but also emotionally resonant. Here, luxury isn't loud-it's intelligent, intentional and deeply immersive.





Ambi, a Modular Furniture System for Flexible Workspaces Launched by Stylex

Stylex, in cooperation with design and research firm Gensler, has launched Ambi, a modular furniture series designed to satisfy the changing needs of today's workplaces. Ambi, which draws influence from ambient noise and ambience, is designed to improve user comfort while eliminating distractions, making it suitable for both concentrated work and collaborative environments.

Ambi has upholstered lounge seats, privacy panels, planters, tablet arms, and casegoods. The grid-based structure links via zippered edges, allowing for modular adaptability. The design includes soft quilted upholstery for a tactile aspect, as well as integrated daisy-chained electricity to improve workplace functionality. The system ships flat-packed in a small accordion-style structure with no internal brackets, making installation easier.

Stylex has announced that the line is available in dual-fabric upholstery, 26 powder-coat frame colors, and three wood veneer finishes. Pre-configured layouts vary from private booths to open media lounges.

Featherlite Inaugurates New Experience Centre In Kochi

Featherlite, a pioneering name in workspace furniture solutions, is happy to announce the spectacular opening of its exclusive experience center, which will showcase the latest innovations and trends in workspace design.

The cutting-edge facility, located at Satyam Tower, Above Kairali Toyota, Trivandrum Bypass, Vyttila, Kochi, spans an impressive 6,000 square feet and offers a diverse range of products to meet the changing furniture needs of modern

businesses, educational institutions & healthcare facilities.

Featherlite's Experience Centre appears to be more than simply a showroom; it is a source of creative inspiration and ideas. Visitors can explore a wide range of workspace furniture alternatives, including Height Adjustable workstations, Meeting Pods, and modern workstations, as well as chairs and soft sitting.

Revolutionizing Office Furniture Solutions, Meet&Co Launches New Website

Meet&Co, a trusted leader in innovative office furniture design, has announced the launch of its new official brand website. The website provides businesses and organizations with a convenient, one-stop shop for luxury office furniture, ranging from ergonomic workstations to collaborative meeting spaces, all geared to elevate modern workspaces. <https://www.meetcofurniture.com/>

A New Era in Workplace Design

The newly created website has a straightforward interface that allows users to simply browse and purchase high-quality furniture designed for today's dynamic work situations. The key offerings include:

1. Ergonomic solutions include adjustable desks, ergonomic chairs, and posture-friendly accessories.
2. Collaborative spaces include modular meeting tables, soundproof office pods, and lounge chairs.
3. Customizable Packages: Businesses who furnish entire offices benefit from bulk-order discounts.
4. Office Design: Free space planning services.
5. Sustainability Focus: Environmentally friendly materials and carbon-neutral transportation choices.



AB DESIGNS CHAIRS



**Where Comfort
Meets Elegance."**

We AB Designs Chairs

one of the leading company in manufacturing of wide range of office chairs, revolving chairs, executive chairs, boss chairs, cafeteria chairs, visitor chairs, visitor office sofa, 3 seaters and many more.



NEW SEASON

We Design Your Seating Imagination



Why Are Roman Blinds Considered a Luxury in the Indian Home Decor Space?

When it comes to home decor, one element that often gets overlooked but holds immense potential is your choice of window blinds. Among the wide variety of blinds available, Roman blinds have carved a niche for themselves, especially in the Indian market, where they are often seen as a symbol of luxury, style, and modern sophistication.

So, what makes Roman blinds a luxurious addition to Indian homes?

Here are some reasons why more homeowners are moving away from traditional drapes and choosing this refined window treatment instead.

The Timeless Elegance of Roman Blinds

Roman Blinds offer a unique blend of elegance and practicality. Unlike typical blinds or curtains, Roman blinds are crafted from fabric that forms soft pleats when raised. The clean lines and graceful draping of these blinds elevate any room, making them a go-to for modern Indian homes that want a balance of minimalism and warmth.

Why Indian Homes See Roman Blinds as a Luxury

1. Custom-Made Sophistication

Roman blinds are often custom-designed to suit specific interior themes. Whether you pair them with wooden flooring or sofa and curtain fabrics in complementary tones, Roman blinds can be tailored to fit the aesthetic of your space perfectly. This customization element adds a layer of exclusivity and refinement to your interiors.

2. Premium Fabric Choices

Unlike standard blinds made from PVC or synthetic materials, Roman blinds are made using high-quality fabrics with tactile texture and finish that instantly enhances the look of your interiors, giving them a luxurious and curated feel.

3. Versatility in Design

Roman blinds come in a wide range of designs, patterns, and colors. From bold floral prints for eclectic spaces to soft pastels for minimalist homes, there are patterns and designs to suit every mood and setting. This makes them a favorite among Indian homeowners and interior designers who seek to make a stylish statement through their window blinds.

Roman Blinds vs. Traditional Curtains

Traditional Indian homes have long embraced heavy drapes and layered curtains, but the shift to Roman blinds signals a desire for a cleaner, more modern aesthetic. Roman blinds are sleek, occupy less space, and are easier to maintain.

Conclusion

In a time where interior design is made personal and curated with elegance, Roman blinds stand out as a home decor essential. And when paired with sheer curtains or textured curtain fabrics, they create a stunning layered look that is ideal for both compact apartments and spacious villas. If you're on the lookout for home decor ideas that blend tradition with contemporary charm, Vista is your one-stop destination.

Bring Home The Most Silent Technology For Window Shades

 • wifi enabled



Remote



Amazon
Alexa

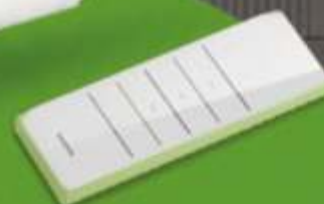


Google
Assistant



Smartphone
& App

Wifi Curtain Motor •



Support
motor
status
feedback

OTA

Firmware
Update



Support
Open/Up, Stop,
Close/Down and
Percentage control

PREMIUM



ULTRA
SILENT



® VYOMA EXIM PVT. LTD.

MUMBAI: 106/202, Shree Ram Industrial Estate,
Old Nagardas Cross Rd., Andheri (E), Mumbai-69.
Mob.: +91 7666356283 | +91 7400437701
E-mail: info@vyomaexim.com



Download on the
App Store



GET IT ON
Google Play

Blending Boho and Persian: Ar. Rajkumar Kumawat's Artistic Vision for Casa Arco



Rajkumar Kumawat

Rajkumar Architects

Project : Casa Arco

Location : Jaipur

Area : 10,000 Sqft

Beginning his vision with luxury, privacy and functionality as a priority, the home is a soulful journey etched in design. Dubbed in the royalty of Jaipur, it pirouettes on visual cues of curves and smooth edges on the exteriors. *"A contemporary shell but with the soul of Persian and Boho style. With ornate details and modern materials, the residence is the epitome of modernly classic",* says Ar. Rajkumar Kumawat. The design captivates attention with the iconic facade, with arches, partitions and focal elements that are used to enhance depth, ensuring the space feels expansive rather than like a gully.

The interiors take one on a journey to Persia with accents of Bohemian designs.

Zoned across two floors, each space is designed with unique elements.

The ground floor includes a drawing room with a kitchen, adding to the functionality of the overall design. The first floor houses the master bedroom, and the second floor incorporates the sons' rooms, each with a different



aesthetic. The door opens to the grand living area- a space draped in a cocoon of comfort. It showcases intricate carvings and ornate motif designs on walls and ceilings, bringing a sense of heritage into the space. Open shelves with bespoke decor elements, where each shelf is bordered with a unique



rectangular motif, add an authentic touch.

Every aspect of the room invites people to immerse themselves in the idea of heritage while celebrating the modern living style. Boho elements add warmth with natural textures and

handcrafted details, while Persian influences bring ornate carvings and decorative motifs. Ceilings feature cornice mouldings and decorative focal points that highlight Boho-Persian artistry, making the space rich yet inviting. This mix created a luxurious yet cosy ambiance, balancing elegance

with artistic and cultural depth.

In essence, this blend of Boho and Persian in the home is a nod to heritage design with the assembly of modern lifestyles. A tribute to the region's royal grandeur, the house masterfully strikes a balance between tradition & beauty.





Umesh Sharma

The Design Studio

Project : Joy Grand

Location : Mohali

Area : 6.0 ACRES



Joy Grand is a luxurious living with a smart automation project in Mohali. Step into the world of Joy Grand, where luxury meets technology in a seamless harmony. Designed for modern lifestyles, the interiors of this prestigious project exemplify opulence, elegance and cutting-edge innovation. Every unit of residence at Joy Grand is equipped with state-of-the-art smart home automation systems.



SMARTER PLUMBING & DRAINAGE SOLUTIONS FOR FUTURE READY SMART CITIES!

Since 1942
Supreme[®]
People who know plastics best
TOTAL PIPING SOLUTION



www.supreme.co.in

Jeevan bhar ka saath...



Lifeline[®]
C-PVC Hot & Cold
Water System



**COMPLETE
WATER STORAGE
SOLUTION**



SKY RISE[®]
Hi-Tech, Low Noise,
S.W.R. Drainage system



Nu-Drain[™]
Underground Drainage
& Sewer System



SAFEGARD[®]
Septic Tanks



**AQUATIC
AQUAKRAFT**[®]
Bath Fittings

40+ Product categories across

• Plumbing • Drainage • Sewerage • Water Management

**Explore supreme's exhaustive product range of more than 14,000 eco
sensible green products & find a perfect match for your smart homes!**

Salient Features : Widest range | Stronger and resilient | Excellent resistance to corrosion and chemical attacks | Perfect hydraulic properties | Simple and leak proof joints | Quick and convenient installation | Durable | Maintenance free | Eco-friendly | Most cost effective.

Toll Free No. 1800-102-4707 | 91-22-4043 0000 | care@supreme.co.in

Download the App
Supreme Pipes



Ar. RK MALIK

RK Malik & Associates

Project: Lumora Residency

Location: Uttar Pradesh

Area: 25,778.985 Sq ft

Photo Credits: Design Worx



Modern architecture doesn't build barriers; it creates flows, connections, and breathing rooms. With the idea of simplicity and minimalism, this 25,778.985 sq. ft. home in Rampur, Uttar Pradesh, redefines contemporary living in a sophisticated approach. Designed by the visionary, **Ar. R.K. Malik, Founder and Principal Architect at RK Malik & Associates**, the residence embraces open spaces and a seamless indoor-outdoor connection. Following clean lines, volumes, and crisp edges, the home pays a nod to the design of the 21st century.

The design begins with the captivating facade, defined by flat roofs and expansive windows extending the indoors outside. It follows a symmetrical design with volumetric voids, adding elegance to the design. The exteriors of the ground floor are clad with marble while the upper floors follow a simple white aesthetic. An extended corridor surrounds the residence with stone-carved walls, adding an essence of ruggedness to the design. As the sun sets, the facade lighting turns the residence into a work of

art. Warm lights with scones and downlights enhance the charm of the residence.

Stepping indoors, the spaces welcome one with neutral hues and a minimal design style. Marked by an entrance door with 3d patterns and teal blue hues, the door makes a bold presence. Further, an elliptical mirror adorns the wall, complemented by a bespoke bench with curves lending visual smoothness to the design. The essence of grandeur begins with the double-height living area cast by the warm glow of a glass statement fixture. Textures are thoughtfully layered to bring warmth and depth, ensuring space remains inviting yet refined. Organic-shaped sofas and bespoke armchairs elevate the allure, while the panelling with a warm glow adds magic to the design. Moreover, murals with bright colours add vibrancy to the neutral space. Transitioning to the dining area, the space evokes the idea of luxury with a bespoke dining table and chic statement fixtures. The chairs are perfectly upholstered to offer a unique design, grabbing the spotlight in the space.



Moving towards the informal living room, the space emanates simplicity with white hues and neutral shades of beige. Designed to accommodate guests and enhance socialisation, this room serves as a perfect space to unwind. An eye-catching painting with pastel pink hues serves as the focal point of the space. Wall mouldings and minimal paintings further elevate the look of the space.

Leaping up to the first floor, the living area here redefines the idea of minimalism with rich black furnishings. A floating fireplace creates a cosy atmosphere to unwind after a long day. Wooden wall panelling with patterns adds a traditional look to the space. Skylights- artfully designed with wooden slats, bring natural light, creating an airy ambiance. Space-saving, sleek furniture maintains a sense of openness, while integrated storage solutions ensure a clutter-free environment. The lobbies are adorned with backlit panels and paintings imbuing uniqueness to the design. Housing the private abodes, every room is artfully designed to meet the aesthetics and preferences of the occupant.



Beginning with the master bedroom, the space deviates from minimalism to explore a cultural touch in modern interiors. Inspired by the local heritage and design motifs of Jaipur, the room is a play of regional patterns and textures. The traditional bed, captured by a trefoil arched wall panelling, serves as the highlight of the room. Vibrant canvas with local motifs elevates the design style. The TV unit is akin to the intricate brackets and jaali patterns of Jaipur, celebrating the heritage charm. A seating area with wooden bases & traditional fabrics creates a timeless design. On the other hand, the kid's bedroom takes one on a whimsical journey with patterned wallpapers and playful elements. A stepped play area is designed to create a jolly nook for the child.



Sustainability takes center stage in the home, with thoughtfully selected materials like wood, concrete, and glass striking a perfect balance between aesthetics and functionality. These enduring elements enhance the home's timeless charm while promoting eco-conscious living. Adding to this, smart home technology is seamlessly woven into the design, enabling effortless control over lighting, climate, security, and more, offering residents a blend of luxury, innovation, and everyday convenience.

In essence, this residence is designed for simplicity, efficiency, and elegance. It harmonises modern living with nature, offering a sanctuary that is stylish and functional!



Mr. BK Malagi, Vice Chairman,
Experion Developers



Experion Elements



Experion Elements, Sector 45, Noida, is a housing complex whose planning and design is governed by the ancient element theory of five: Air, Water, Earth, Fire, and Ether. This thematic paradigm is not merely an aesthetic guideline but also a conceptual framework that dictates the spatial & architectural choices throughout the development.

The architecture, designed by **DSP Design**, balances modern lines with a calm elegance. The two independent towers (stilt + 40 storeys) are carefully positioned to maximize natural light, ventilation, and view corridors. The site layout, with dual frontage along a 30-meter-wide road, creates spatial clarity while integrating seamlessly into the urban context. The design offers an elevated spatial experience that reinforces the project's premium character.



The landscape design, crafted by **Belt Collins (Hong Kong)**—one of the world's most respected landscape architecture firms—emphasizes functional ecology over ornamentation. The carefully curated mix of local and durable plant species enhances biodiversity, manages the microclimate, and enriches the sensory experience. A Japanese-style Miyawaki garden within the site reinforces the connection to nature, while features like rainwater harvesting and shaded pathways cater to both environmental and user needs.

Distinct design motifs such as raindrop patterns, leaf-form pavilions, tranquil water cascades, and sculptural elements are woven throughout, adding richness and texture without compromising the integrity of the visual narrative. The project's amenities include a pickleball court, kick-boxing ring, a Grand Cineplex with a 4K LED screen, work-from-home business center, pet-friendly zones, a wellness zone with yoga and meditation spaces, a nutrition bar, and more—each space acting as a connector between the built and natural environments.

Experion Elements is a low-density residential complex comprising only 320 spacious units, ensuring generous floor plans and a smaller ecological footprint. The project is **GRIHA-rated** as a green building. Key design details also include mosquito mesh in all sliding windows/doors, walk-in wardrobes in all bedrooms, dedicated EV charging facilities for each unit, and an extensive multi-layer security system (with 24-hour surveillance through 200 CCTV cameras).

The most emphasized aspect of the design is utility, balance, and durability. It is centered on creating an integrated living environment that not only responds to environmental stimuli but also to evolving human needs—going beyond superficial decoration to create a resilient and harmonious sanctuary.





40+
YEARS OF
BUILDING
TRUST



PIPELINE OF NEW INDIA

Superior quality,
unmatched reliability
since 1983.

OUR ARRAY OF QUALITY BUILDING PRODUCT PIPES

NEW AGE CPVC PIPES & FITTINGS

Kasta's CPVC pipes and fittings meet Indian and International standards, ideal for hot and cold water systems. They use high-quality materials and advanced manufacturing tech.



THE BEST UPVC PIPES & FITTINGS

Kasta's UPVC pipes and fittings conform to ASTM-D2467 standards and are suitable for cold water applications, such as potable water distribution for bathrooms, kitchens, sinks, and laboratories, with a temperature resistance up to 60°C.



OUR ROBUST SWR/ DRAINAGE PIPES

Kasta SWR pipes and fittings provide an ideal solution for sewerage needs in both rural and urban areas. They offer superior properties compared to traditional drainage systems, ensuring fast waste removal without blockages or leaks.



FOR ALL WATER STORAGE NEEDS

Kasta water storage tanks are known for their strength and durability, with a four-layered wall for reliability. UV stabilization ensures long-term performance, and complimentary servicing adds to their quality.



THE LIFELINE FOR YOUR GARDEN

Kasta Protech Garden Pipes are durable and flexible, resistant to chemicals and temperature variations. They're suitable for carrying fuels and offer easy maintenance with their smooth, transparent design.



FOR UNLIMITED BONDS STRENGTH

Protech Solvent Cement ensures strong and consistent joints for UPVC pipes and fittings, suitable for both residential and commercial hot and cold water systems up to 200°F/93°C, with a recommended application temperature of 40°C.



Kasta®
SMART PIPING SOLUTIONS

Kriti Industries (India) Ltd.
Toll Free No.: 18002701080
info@kritiindia.com | www.kritiindia.com



BUILDING THE FUTURE WITH STRENGTH AND PRECISION

Trust Kasta Pipes to empower
your construction projects
with smart, secure, and
future-ready piping systems.



kasta®

Kasta®
SMART PIPING SOLUTIONS

Toll Free No.: 18002701080 | info@kritiindia.com





Chhaya Sharma
Design ArTEC



Project: Zen Sanctuary
Location: Gurgaon **Area:** 2650



Located in an urban locality, this residence invites you to immerse in the tranquility of Zen and the exuberance of Bali. The story begins when a family of three aims for a simple and luxurious residence to escape from the urban chaos. "Initially a 4-bedroom apartment is transformed into a 3-bedroom apartment with a fusion of Japandi, Balinese and contemporary styles, offering a unique aesthetic", explains *Chhaya Sharma, Founder and Principal Designer at Design ArTEC.*

The essence of awe and wonder begins in the grand living space draped in earthy hues. A bedroom is merged into the living room to create a larger space for the family to unwind. The living space is a fusion of earthy tones and textures, curating a minimalist aesthetic. "Every nook in the space embraces subtle curves and arches, breaking away from the vertical monotony. Further, we have included veneer paneling in walls along with textures mimicking the sense essence of Japandi. To add a whimsical character, we have

incorporated a wooden coffee table with a rounded base, adding dimension to the airy design", explains Chhaya. An enthralling blend is seen in the ceiling with layered and wavy lines, creating a contemporary canvas. Natural materials like cane & rattan introduce a Japandi touch, enhancing the overall allure.

Transitioning towards the kitchen area, the design continues the same palette with a small island kitchen and optimized storage. A captivating pantry unit with a functional layout complements the overall design. What sets it apart, is the Balinese essence infused in the dining area with wooden dining chairs and an eclectic table! Cane lights & a complementing painting serve as natural and simplistic elements in the design. The space also includes a powder room with a glam look, adding to the idea of luxury. Pops of hues are added through furnishings and every space follows a certain texture to create a sense of depth. Arches in furniture, hallways and ceilings offer a sense of visual retreat, defying the conventional.



FRAME
COLLECTION

—
by
—

mozart[®]
THE TILE COMPOSER

DIGITAL FULLBODY
TILES COLLECTION







MOZART VITRIFIED PVT. LTD.

Survey No. 164/1, 165/2, Sartanpar Road, Ratavirda Village,
Tal. Wankaner - 363 621, Dist. Morbi, Gujarat, INDIA

✉ info@mozarttiles.com | export@mozartvitrified.com



For More Information Visit
www.mozarttiles.com

Follow us on :    

☎ +91 99099 78923

mozart[®]
THE TILE COMPOSER



MOZART VITRIFIED PVT. LTD.

Survey No. 164/1, 165/2, Sartanpar Road, Ratavirda Village,
Tal. Wankaner - 363 621, Dist. Morbi, Gujarat, INDIA

info@mozarttiles.com | export@mozartvitrified.com



For More Information Visit
www.mozarttiles.com

Follow us on : [f](#) [i](#) [x](#) [in](#)

+91 99099 78923



KANGAROO KIDS, VADODARA, GUJARAT

The Light House project aligns the Architectural vision of Highly specialized and personalized learning environment model of today's need for tomorrow's future. Located at Vadodra, a small town in Gujarat, our challenge at the beginning of the process of conceptualization, was to optimize the use of available piece of land with 20,500 sqft plot area to accommodate twenty pre-preprimary classrooms. Having only limited open space for small aged children, that would provide flexibility, healthy day light within interior spaces, good air quality, ease of movement, adequate sound attenuation and shaded open spaces with opportunities to open learnings.

The entire school caters to the Pre-primary section of learning, having Five divisions of each grade of CBSE Board of education. We started with the idea of maximizing the open and larger volumes for classroom learning spaces which facilitated tiny habitants to explore their early development skills with the holistic approach. Each volume of classrooms were designed to embrace uniquely to the outside areas allowing easy access to the private grass fields which were strategically crafted for young minds, aiming to cultivate better qualities of lifelong learning. It goes beyond the sheer memorization and test preparation, focusing on developing critical thinking, problem-solving, and emotional intelligence, alongside the academic knowledge.



CLASSROOM SPACE



TANGENT DESIGN CELL,
BORIVALI.

The structure is spread across the linear plot of arid surrounding with ground plus one floor, each façade is provided with perforated lattice screen.



The classrooms for playgroups were designed to facilitate the easy gatherings for daily playtime or events as required by combining two classrooms into one single hallway. Despite the hall's expansive area, intentional use of subtle colors, integration of smooth edges in design full height openings of windows permeated ample natural light created visual and physical connection between the occupants and surrounding environments.

Use of darker shades of grey tones to the external façade with the combination of terracotta color sets the earthy yet contemporary look. The strategic use of subtle colors such as pastel green, blue and shades of pink for interior space play a crucial role in the school interior.



ROHIT BHATKAR AND PRASHANT SUKHATANKAR.

A true purpose of education is to make minds not careers.

—william deresiewicz

Elevating Healthcare Design Through Synergy of Brand and Architecture



**Ravideep Singh, Associate Director,
Creative Designer Architects (CDA)**

Project : SPS Hospital's clinic

Location : Ludhiana, Punjab

Area: 7500 Sq.ft

Project team : Ravideep Singh,
Maninder Kaur, Zulfiqar Zaidi



The design by Creative Designer Architects for SPS Hospital's clinic in Ludhiana is a forward-thinking model for future facilities by SPS Healthcare. It sets a new benchmark for regional clinics—combining healthcare efficiency, patient-centric design, and brand coherence in a scalable, replicable format. At its core, the project merges empathy with efficiency.

The **vibrant façade**, marked by the bold colours of the SPS brand, anchors the clinic within its urban context while serving as a recognisable symbol of wellness. Inside, intuitive spatial planning promotes smooth circulation and operational clarity. A warm, earthy material palette enhances the healing environment, with soft transitions and

gentle curves guiding users through the space. Key functional elements are standardised for scalability, while a **bespoke aesthetic toolkit** was curated, functioning as a Minimum Viable Product (MVP) to recreate the SPS brand experience across diverse environments.

Responsive to Ludhiana's subtropical climate, the clinic incorporates a perforated metal screen along the public corridor ensures thermal comfort, energy efficiency, and visual depth. Architecture here acts as both symbol and system: communicating brand values while delivering a high-performing, context-sensitive healthcare facility that sets a new benchmark for regional clinics.



ARE YOU
GYPSUMIZED!!
THINK GYPSUM, THINK BUILDON

GYPSUM
THAT
WILL
CHANGE
THE
FACE
OF
DESIGN
&
CONSTRUCTION.

THE BEST IMPORTED GYPSUM PLASTER

Buildon is one of the leading manufacturer & importer of gypsum plaster & first of its kind embarking in India. At our factory, we are producing the finest quality of gypsum plaster in the World, Being pure white in color & hardness over 40% more than any other gypsum in Indian market, It's a world class product with highest grade of gypsum in the construction arena

BECOMING MOST PREFERRED BRAND BY THE BUILDERS & ARCHITECTS



Buildon Plasters Pvt. Ltd.

3B, Mapkhan Compound, Mapkhan Nagar, Marol Maroshi Road
Andheri (E), Mumbai-400059 Mob: 9004083336 / 9004911444

Maharashtra | Goa | Gujarat | Delhi | Tamil Nadu
Kerala | Telangana | Madhya Pradesh | West Bengal

www.buildon.co.in Email: info@buildon.co.in





National Gypsum: Introducing Evolve for a better future

The National Gypsum Company, based in Charlotte, NC, manufactures and markets high-quality building products under the Gold Bond, ProForm, and PermaBASE brands.

Gypsum walls and ceilings will be transformed by the latest innovation from National Gypsum. With the EVOLVE family of products, water is conserved, energy is reduced, and carbon emissions are reduced. Additionally, EVOLVE is significantly lighter than traditional 5/8" Fire-Shield Gypsum Board, making it an ideal choice for architects, contractors, and distributors.

With EVOLVE, Gold Bond Building Products, LLC offers a significant improvement in gypsum board technology, offering enhanced performance and lower environmental impact. Three innovative products are part of the EVOLVE family: EVOLVE 30TM, EVOLVE XTM and EVOLVE XPTM.

"The EVOLVE product line is truly the next evolution of gypsum board products. EVOLVE allows architects to specify a sustainable board product that is easier on the environment and gives contractors a versatile, lightweight board product which is easier to install. The reduction in board weight also provides transportation efficiency. We are excited to introduce EVOLVE to the construction community," says Chris Whitmire, Director of Product Marketing.

With its Gypsum Board, Trimurti unveils revolutionary construction solutions

To meet the ever-changing demands of the construction industry, Trimurti, a recognized leader in building materials, has launched an innovative range of products. Trimurti's new lineup of wall finishes promises superior durability, cost-efficiency, and ease-of-use to contractors, architects, builders, and homeowners. With these products, wall construction and plastering will be transformed for residential and commercial projects.

As a part of this innovative range, Trimurti offers Gypsum Board products. As a result of their design, these boards provide excellent performance in a wide range of applications, including partitions, ceilings, and walls. A perfect solution for residential and commercial projects, Gypsum Board offers durability, cost-effectiveness and ease of installation while ensuring a smooth, polished surface.

With its innovative construction products, the building process is simplified, project timelines are optimized, and quality results are long-lasting. Their wall construction solutions ensure superior aesthetics and durability for both builders and homeowners.

Introducing DewBloc Gypsum Plasterboard by Knauf India

With the launch of DewBloc Gypsum Plasterboard, Knauf India is pioneering the next generation of construction innovation. DewBloc's specially formulated gypsum core and moisture-repelling additives make it ideal for interior drywalls and false ceilings that need enhanced resistance to moisture absorption and infiltration. The DewBloc combines functionality and style with ease of installation, offering limitless design possibilities for any space.

Tested in accordance with IS 2095 (Part 1): 2023 Type H2 and BS EN 520:2004 standards, Knauf DewBloc ensures the highest quality standards. As well as contributing to energy-efficient buildings, it is ideal for residential and commercial applications.

Sumit Bidani, CEO, Knauf India, says, "The launch of DewBloc Gypsum Plasterboard underscores our commitment to driving innovation and sustainability in the Indian construction industry. Designed to combine strength, durability, and aesthetic appeal, DewBloc addresses a critical industry challenge-moisture damage in interiors. It is especially well-suited for wet area applications and offers reliable performance during the monsoon season."



EASE OF
INSTALLATION



SOUND
INSULATION



DURABLE



ECONOMICAL



VERSATILE



SQUARE EDGE



TAPER EDGE

REGULAR / MOISTURE RESISTANT / HEAT RESISTANT GYPSUM BOARD

THICKNESS : 11 & 12MM

LENGTH : 1830MM

WIDTH: 1220MM

EDGE PROFILE : TE

Sr. No. 266 P1/P2, Mitana - Neknam Highway, At. Mitana,
Dist. Morbi - 363650 (Gujarat) INDIA.

+9163539 98498 | info@gyplime.com | www.gyplime.com

everest

DuraPro | A-board

Durable Exteriors with DuraPro.



A1 Fire-Safety



Cross-Mesh Technology
for Higher Strength



All Weather
Exterior Board



Size: 2440mm x 1220mm | Thickness: 6, 8, 9, 10, 12, 18mm

Reimagining Conventional Construction with Everest DuraPro.

In the foothills of a remote valley, a new-age quarantine facility has taken shape—one that embraces modern drywall systems for speed, efficiency, and dependable performance. The objective was straightforward: build a space that could be occupied quickly, with minimal upkeep and reliable functionality over time. Moisture resistance, fire safety, and durability weren't just priorities—they were essential requirements.

At first, traditional brickwork was considered. It is a proven method and structurally sound, but the longer construction timelines, curing stages, and labour demands made it less suitable for a project with such tight deadlines. Other quick-to-install options like gypsum and particle boards were explored as well, but their limitations in high-moisture or exposed conditions raised concerns around long-term reliability.

That's when the team shifted focus to more robust drywall-based systems—and ultimately selected Everest DuraPro. The architects opted for the system for the assurance of consistent performance. In fact, Everest DuraPro enabled walls to be completed up to four times faster than conventional brickwork, significantly accelerating the construction timeline without compromising on quality.

What is Everest DuraPro?

Everest DuraPro is a high-density, high-performance building board manufactured using the advanced Hatschek process. The board is a homogeneous mixture of cement, treated cellulose fibres, finely ground silica quartz and select mineral fillers. It is steam cured under high pressure and reinforced with cross mesh fibre technology, giving it exceptional dimensional stability, strength and resilience.



Samshi Quarantine Centre, Bhutan
External Wall Solution with Everest DuraPro

Applications:

External Cladding | Wet area walls (bathrooms, kitchens, utility zones)

Internal Partitions | High-traffic areas like corridors and healthcare facilities





Amazon's New Echo Spot Debuts in India

Amazon revealed its updated Echo Spot in India on Wednesday, bringing a big update to its smart display lineup. The new model features a total design redesign, drawing inspiration from the Echo Pop's contemporary appearance, although it differs significantly from its predecessor by deleting video calling and smart camera capability.

The updated Echo Spot is now available in Black and Blue via Amazon.in, Blinkit and Croma's online and offline locations. While the actual price is Rs 8,999, early buyers can take advantage of a limited-time introductory offer for Rs 6,449.

Latest Modular 'LIORA' Switches Launched by ABB India

ABB India debuted its new 'LIORA' modular switches at ELECRAMA 2025. Designed for smart residential, business, and hospitality areas, 'LIORA' switches are engineered to set new standards in the modular switch industry. This innovative series of switches, sockets, and Miniature Circuit Breakers (MCBs) elegantly combines modern technology while providing greater safety, performance, and aesthetics.

According to the Bureau of Indian Standards (BIS), ABB's latest addition to its Indian modular switches and accessories range is 'Made in India'. LIORA is designed for a variety of contexts and offers both flair and functionality, making it an excellent choice for urban spaces. LIORA, with smooth edges for a perfect wall fit, presents the latest offerings with diverse functions, such as different switches, socket outlets, electronic devices, charging sockets (A+C type USB), electronic bells, key card switches, and so on. It is the best option for updates and new installs, providing dependability, efficiency and elegance.

NUOS Unveils Game-Changing Zigbee 3.0 Lineup at Smart Home Expo 2025

NUOS has launched its latest suite of smart home products, anchored by the NUOS Zigbee 3.0 series, at the Smart Home

Expo 2025, in a ground-breaking move that combines worldwide compatibility with Indian ingenuity. This launch represents a critical milestone in the brand's decade-long effort to provide Made-in-India home automation products that blend elegance, intelligence and simplicity.

The launch also has new smart touch panels with improved aesthetics, tactile haptic feedback, and intuitive LED indicators. At the heart of this introduction is NUOS Zigbee 3.0, a smart automation range that is universally interoperable and built for everyone, from DIY homeowners to experienced system integrators. Built on the open Zigbee 3.0 protocol, the new line fully integrates with global platforms like Home Assistant, Samsung SmartThings, Tuya Smart Life, Sonoff, and any Universal Zigbee Hub, delivering plug-and-play convenience to Indian homes without sacrificing performance.

Panasonic Unveils Smart Home Experience Centre In India

Panasonic Life Solutions India has opened its Smart Home Experience Centre in the national capital, a technologically advanced exhibition that demonstrates how modern homes can seamlessly integrate health, safety and convenience through intelligent automation. Miraie, the company's unique IoT-enabled platform, is at the center of this interactive area, connecting appliances, lighting, air quality systems and security devices by a single mobile interface.

The experience center houses Panasonic's whole smart home portfolio, which includes HVAC and IAQ (indoor air quality) systems, smart lighting, kitchen and bathroom fixtures, and advanced security solutions such as video door phones and surveillance cameras.

Miraie, which debuted in 2020, enables consumers to control a wide range of Panasonic devices-from air conditioners & lights to washing machines via smartphones. The Matter protocol compatibility allows the platform to incorporate suitable third-party smart home devices.

SMART LIVING STARTS WITH SMARTER SWITCHES

EXPERIENCE THE CONVENIENCE OF AUTOMATION
WITH SMART TOUCH TECHNOLOGY.

SAVE UP TO
20%
ON ELECTRICITY BILL

Homes | Offices | Retail Stores | SoHo



Curtain
Control



Appliance
Control



Light
Dimming



Fan Speed
Control



TO KNOW MORE

WiFi Switches | Touch Panels | Convertors | Sensors | Sensor Lights

SMART SECURITY BUILT FOR YOUR LOVED ONES

Introducing the **SOS Emergency Button**



COMPREHENSIVE
SAFETY
SOLUTION

MULTI-USER
ACCESS FOR YOUR
PEACE OF MIND

IN-BUILT BATTERY
FOR UNINTERRUPTED
USE


EMERGENCY
ALERT VIA SMS AND
PHONE CALL

PANIC BUZZER

SCAN TO
KNOW MORE

**TATA POWER EZ HOME, INDIA'S MOST TRUSTED BRAND,
IS NOW ALSO THE SAFEST.**

 **1800 2 12345**

 tatapower.com/ezhome



SMART LIVING REDEFINED

A CONVERSATION ON THE FUTURE OF HOMES WITH TATA POWER EZ HOME



MR. SUJAY SAHA

Head - Home Automation
TATA Power Co. Ltd.

Q How is home automation relevant in modern lifestyles, and what problems does it help solve?

A: Today's fast-paced life brings challenges—time constraints, high energy use, and safety concerns. Home automation addresses these with remote and automated control of lighting and appliances with a user-friendly mobile app or voice-enabled device. It enhances security and makes life more efficient, secure, and convenient.

Q What are your views on home automation's growth potential in the market?

A: Home automation is on a strong growth trajectory, driven by demand for convenience, energy efficiency, and smart living. As IoT and AI technologies become more accessible, adoption is accelerating, pointing to a future of rapid innovation and market expansion.

Q What makes Tata Power EZ Home different from other smart home solutions in the market?

A: Tata Power EZ Home goes beyond basic automation. It combines **energy intelligence, sleek design, and seamless control**. It's retrofit-friendly, robust, and simple to install—even for tenants. No extra hardware or subscriptions—just connect to home Wi-Fi and use the Tata Power EZ Home App.

Q How does Tata Power EZ Home enhance the user's everyday life?

A: With voice control, scene automation, and app access, users can control lights, fans, & curtains with ease. Smart routines—like lights dimming at sunset—make living intuitive. **Real-time alerts via robocalls and notifications** add another layer of safety.

Q How does the system support energy efficiency?

A: The **built-in energy analytics dashboard** helps track usage, compare appliance performance, and spot savings opportunities—supporting a greener lifestyle with lower bills and no trade-off in comfort.

Q Can you tell us more about its design?

A: The devices reflect modern elegance with a **sleek, bezel-free design** that complements contemporary décor—offering smart functionality with visual sophistication.

Q What role does Tata Power EZ Home play in clean mobility?

A: Integrated with Tata Power EZ Charge, our **Smart EV Charger** brings clean mobility home. With **auto switch-off on full charge, electrical protection, and RFID access**, charging is secure, efficient, and smart.

Q So, what's the bigger vision?

We're building more than smart homes—we're enabling future-ready lifestyles. From energy management to Electric Vehicle charging, EZ Home delivers sustainable, convenient living in one seamless platform.

”

Q In one line, what does Tata Power EZ Home stand for?

A: It's your ultimate gateway to smarter living, effortless, secure, and truly sustainable, right from your doorstep to your driveway.

Heritage Meets Sustainability: Lessons from the Past for the Cities of Tomorrow.



Sonali Bhagwati

DPA



Can the wisdom of the past guide us in building a greener and resilient future? Well, today, as cities grapple towards eco-conscious living, they have lost the essence of heritage in modern living. With technologies and smart systems, the idea of authentic designs or sustainable factors has left the contemporary landscape. This Earth Day, we aim to create designs where heritage meets sustainability and the future pays homage to both concepts. To mitigate the dangers associated with natural and man-made disasters, a well-preserved legacy is equally

crucial. Experience has demonstrated how urban sprawl, neglected rural areas, natural resource degradation, and poorly designed new development raise community vulnerability to disaster risks. In this article, **Ar. Sonali Bhagwati, Founder and Principal Architect at Designplus Architecture**, explores lessons from the past for the cities of tomorrow.

For centuries, traditional architecture has followed local climates, resources, and cultural practices. These buildings were designed with inherent efficiencies like courtyards

for ventilation, shaded verandas and orientation strategies that optimised sunlight. Unlike many contemporary structures reliant on mechanical systems, heritage architecture often thrived on passive design principles. In the era of climate change, these time-honoured techniques are being reinterpreted through the lens of sustainability. For instance, including wind catchers or cooling towers inspired by the traditional architecture of Rajasthan in modern commercial buildings can mitigate the need for artificial cooling.



Traditional construction materials like earth, lime, and stone were inherently sustainable. They were locally sourced and maintained indoor environmental quality. Today, as architects seek alternatives to high-carbon materials like concrete and steel, there is renewed interest in these humble resources. Incorporating traditional materials in contemporary design can significantly reduce the embodied energy of buildings. For example, rammed earth walls are making a comeback in urban projects due to their thermal mass and tactile beauty. Likewise, lime plasters are being rediscovered for their breathability and low toxicity.



The most important aspect of heritage and modern sustainability is vernacular architecture. Vernacular architecture offers invaluable insights into climate adaptation. Long before the advent of air conditioning, traditional structures employed ingenious methods to regulate indoor climates. In the arid regions of India, the jali (perforated screen) allowed for airflow while filtering light. As cities today grapple with rising temperatures and energy costs, these passive strategies are being integrated into

new developments. The revival of green roofs and natural ventilation systems is evidence of a growing recognition that the past holds valuable blueprints for the future.

The past is a reservoir of what could be, a source of ideas, strategies, and values that remain profoundly relevant. For it is in the fusion of heritage and sustainability that we find a design philosophy robust enough to weather change and rich enough to inspire generations to come!



A Contemporary Sanctuary by Palindrome Spaces: Designing a Home That Balances Urban Energy with Serenity and Spirituality



Ar. Nayan Shah

The Purple Boat

Project: Poised in Pastels

Location: Thane Area: 1,722 Sq.ft

Photo Credits: www.whatweclick.com



Amid Thane's evolving skyline, this 1,700-square-foot residence by Nayan Shah of Palindrome Spaces offers a rare blend of spatial intelligence and quiet luxury. Designed for a multigenerational family of five, the home is a study in restraint. A muted palette, concealed storage, and a fluid layout create an environment of effortless elegance. More than just a living space, it exemplifies how thoughtful design can transform the rhythms of daily life, creating a home that is both deeply functional and inherently serene.

From the outset, the home's design narrative is defined by its symphony of soft, neutral tones-whites, beiges, and warm browns-creating a cohesive visual language that nurtures openness and ease. These muted hues not only allow light to dance across surfaces but also imbue the space with a meditative quality. The apartment's symmetrical layout, with a central living space flanked by bedrooms on either side, fosters harmony and connectivity, encouraging moments of togetherness while preserving privacy when needed.

Step through the door, and the world outside fades away. The checkered black-and-white flooring in the foyer makes an immediate impression-a contemporary reimagining of timeless design that hints at the home's careful balancing act between tradition and modernity. Soft white mouldings trace the walls, drawing the eye toward the expansive living area, where pastel whites, sage green upholstery, and delicate gold accents come together in quiet harmony. At the heart of this space, a striking stone-clad TV unit commands attention-not as a mere fixture, but as an anchor that grounds the room, its textured surface adding depth and a sense of organic tranquility.

Beyond aesthetics, the home's design is deeply rooted in functionality. Service areas and storage spaces are masterfully concealed within seamless wall panelling, ensuring an uninterrupted visual flow and a clutter-free ambience. The strategic placement of concealed doors not only maximises efficiency but also amplifies the sense of expansiveness within the apartment.





In a nod to the family's cultural traditions, a mandir space—gracefully adorned with gold-finished acrylic wallpaper—introduces a spiritual dimension, infusing the home with a quiet, reverential presence.

More than just a place to eat, the dining area is a space where stories unfold over shared meals, and where laughter lingers long after plates are cleared. The striking stone-top dining table, both sturdy and elegant, becomes the centerpiece of these everyday rituals, its cool surface reflecting the warm glow of pendant lighting above. Soft pastel salmon chairs invite lingering conversations, their muted vibrancy adding warmth without disrupting the home's tranquil aesthetic. Just beyond, a freestanding circular wash basin—its grooved stone, brass inlays, and frosted glass catching the light in delicate ways—stands as both a sculptural element and a functional detail, reinforcing the thoughtfulness that defines this home. Here, design isn't just about aesthetics; it's about creating an atmosphere where moments turn into memories. Throughout the residence, carefully curated artwork sourced from renowned lifestyle collections breathes personality into the walls, each piece adding depth and narrative to the design story.

The two master bedrooms, each uniquely crafted to reflect



the distinct personalities of their occupants, serve as private sanctuaries within the home. One bedroom, wrapped in a nostalgic dusty rose lime-plaster finish, radiates warmth and quiet sophistication, evoking a timeless elegance. In contrast, the second master bedroom embraces a more playful, futuristic aesthetic, featuring dynamic LED highlights and fluid, abstract artwork that lend the space an edgy, contemporary character. The careful interplay of textures, lush indoor greenery, and bespoke carpentry underscores the home's dedication to craftsmanship and individuality, ensuring that each space is not only beautiful but deeply personal.

"In a city that pulses with relentless energy, this home is a rare and profound counterpoint—a space where time slows, simplicity is celebrated, and every corner tells a story of harmony and refined living," says Nayan Shah. Designed and executed over a meticulous three-month period, this Thane residence is more than just a dwelling—it is an experience, an orchestrated interplay of design, comfort, and mindfulness. Every detail, from the selection of materials to thoughtful spatial planning, has been conceived to transcend fleeting trends and instead create an enduring sense of peace and elegance.





Id. Mitesh Shah
Dreams & Ideas

"Transformation Complete!

We're thrilled to share the final reveal of our latest interior design project! From concept to completion, our team worked tirelessly to bring our client's vision to life.

The result is a stunning space that exudes elegance, sophistication, and warmth. Every detail, from the carefully selected color palette to the precision-crafted furniture, comes together to create a truly show-stopping interior.

Highlights of the project include:-

- A beautifully designed living area perfect for relaxation and entertainment-
- A sleek and modern kitchen equipped with top-of-the-line appliances-
- A serene bedroom oasis that promotes restful sleep and rejuvenation
- We're grateful to have had the opportunity to work with our client to create a space that reflects their unique style and personality.

Project: Keystone 72 Sevasi Vadodara
Location: Sevasi

Ready to transform your own space? Let's get started on your next project!



Project Details:-

- Location: Sevasi Vadodara
- Project Type: Residential
- Design Style: Mitesh Shah
- Completion Time: 3 months

Design Team: Dreams and Ideas





Smart Node: Building the Future of Smart Living

In an era where smart living spaces are no longer a luxury but an expectation, Smart Node has emerged as a true catalyst in transforming homes into smarter, more intuitive environments. With thousands of successful installations and channel partners across India, Smart Node is not just another name in home automation, it's a brand trusted by architects, builders, and forward-thinking homeowners alike.

Automation Beyond the Basic

While the market is crowded with brands offering basic on-off control of lights and appliances with a phone, Smart Node is leading a new wave in the home automation industry, establishing itself as a trusted wireless brand. From scene-based environments to human-centric lighting that adapts to circadian rhythms, Smart Node elevates a space into a smart, responsive entity. It provides an entire ecosystem of products to become a one-stop solution in automation. Unlike traditional wired systems, Smart Node's wireless automation becomes ideal for existing homes.

With seamless integration of controls, including mobile app, voice commands, and touch panels, Smart Node enables the creation of immersive experiences in every room. It's not just smart; it's smart, secure, and serviceable, ensuring long-term value for every stakeholder.

For Builders and Architects

Builders today face the challenge of balancing innovation, speed, and cost. Smart Node solves this with its solutions by reducing the wiring needs, minimising civil work, and ensuring faster project turnarounds. Smart Node's USP lies in its solutions, like the three-way or two-way solutions, which make it the right choice for builders. Not just automation, its completely customisable touch interfaces and luxurious keypads make a compelling difference for architects who want their designs to come alive. Architects love the flexibility, designers love the elegance, and homeowners love the ease of use.

With over 500+ known architects and 33+ reputed builders already on board, and 300+ channel partners across India, Smart Node's service network ensures on-time delivery, seamless installation, and reliable after-sales support.

Expanding Experience Centres Nationwide

Experience Centres are a cornerstone of Smart Node's growth strategy. Despite the channel partner's experience centres across India, the Ahmedabad flagship centre has already started to deliver high engagement and conversion rates. Building on this success, Smart Node will launch its own 15 new Experience Centres across key cities in the next three years, offering product demos and training to bridge the gap between interest and adoption.

About Smart Node

In an era where global brands often dominate local markets, Smart Node is proud to be designed, engineered, and manufactured entirely in India, providing it with better control over the product quality, with AWS cloud servers, and constant innovation, without relying on imported components or white-labelled solutions, unlike most companies.

Smart Node goes beyond selling devices, it partners with architects, builders, and homeowners to bring smarter, more intuitive spaces to life. In a market full of noise, Smart Node delivers real innovation, lasting value, and trusted support. If you're building the future, build it with Smart Node, where design meets intelligence and automation meets aspiration.



A Complete Home Automation Solution



Sanjana Paramhans - Utsav Shah
Rddhima Golyan

White Noise Design Studio

Project : Azzure Oceanic

Location : New York **Area :** 6500 Sq ft

Design Team : Sanjana Paramhans, Utsav Shah, Rddhima Golyan, Shruti, Sridhar

Photo credits : Zack DeZon



Designed by White Noise Design Studio, Alessa is a distinctive Italian restaurant located in Midtown Manhattan, crafted for the 212 Hospitality Group. Described as a 'slice of la dolce vita,' it offers hearty Italian cuisine in a setting that beautifully intertwines architecture, culture, and storytelling. Spread across two floors and 6,500 square feet, Alessa creates refreshing dining experiences on each level, inviting guests to gather, indulge, and celebrate in the warmth of Italian hospitality at the heart of New York City.

White Noise Design Studio choreographed every artistic detail - from branding and interiors to decor, furnishing, construction & installation - ensuring a cohesive identity. A lively front bar welcomes guests for post-work cocktails, leading into an elegant dining area with plush, structured furniture. A hidden speakeasy lounge at the back adds an element of surprise, featuring plush seating, ambient lighting & artisanal furniture.

Lighting plays a central role, with a thoughtful transition from natural daylight to warm, vintage-inspired fixtures that create different moods throughout the day. Rich, tactile materials like brass, velvet, and mosaic tiles lend a nod to Italian aristocracy, while ornamental mosaic pizza ovens marry beauty with functionality. Alessa is a versatile, sensory-driven dining destination that redefines Midtown's culinary landscape.





Electrical & Automation

enConnect[®] Home Automation for a Smarter Lifestyle.

Lauritz
Knudsen
Electrical & Automation



Personalized
Control



Enhanced
Convenience



Modular and
Compatible



Enhanced Safety
and Security

Scan to Enquire



Lauritz Knudsen Electrical & Automation, Electrical Standard Product
A/600, Shil-Mahape Road, TTC Industrial Area, MIDC Thane, Mumbai, 400 710

Customer Interaction Center (CIC) Phone no: 022 6932 7800
Web: www.LK-EA.com | e-mail: CIC@LK-EA.com

WIRELESS AUTOMATION

Plug, Play, and Automate

Enjoy effortless control with devices that connect wirelessly. No messy wires, no complicated setup. Just turn the power on and connect your phone. An intuitive user interface makes system configuration easy. Control everything easily from your phone or tablet.



Why enConnect is the Best Choice:



No complex wiring
Works with existing electrical setups



Expandable system
Add new devices effortlessly



Future-proof technology
Regular updates for enhanced functionality



Seamless Integration
Easy installation and effortlessly integrate with existing devices.

Smart Home Control at Your Fingertips. Anytime, Anywhere



Scan to download
enConnect APP >



FOAID Designs crafts a seaside splendour in Chennai.



Nestled near Marina Beach in Santhome, FOAID Designs reimagines seaside living with an unconventional blend of minimalism & opulence at the Azzure Apartments. This 2200 sq. ft., 4BHK apartment on the 11th floor is a serene retreat for a family of five, transitioning from an independent bungalow to a more peaceful high-rise abode.

A tranquil foyer with planters and artefacts welcomes you, leading to a warm living area and an eclectic dining space that subtly blends golden accents with modern aesthetics. A cleverly hidden pooja room and secret storage reflect thoughtful spatial planning. A multipurpose teal-toned room echoes

the rhythm of the sea, doubling as a TV lounge, guest room or study, equipped with a hydraulic sofa-cum-bed.

Each bedroom reflects generational nuances- from the quirky, youthful son's room with a bespoke sandstone wall to a minimalist, rose gold-accented parent's suite and a master bedroom exuding rustic charm with concrete textures and fluted glass.

With a calm palette of greys, creams & warm neutrals, the design embraces nature, functionality & emotion. Every corner is curated with intention, offering an inviting, inspiring sanctuary that balances vibrancy with tranquillity- truly a dream home by the sea.



Ar. Ekta Agarwal
FOAID Designs

Project : Azzure Oceanic





Matrix undermount runners launched by Häfele

The new Matrix line of undermount runners from Häfele is designed to improve drawer motion across kitchens, wardrobes, and bathrooms. The Matrix undermount runners support diverse drawer designs with four weight capacities and a wide range of lengths. For superior drawer stability, the 40 kg and 60 kg variants feature synchronised technology. There is an integrated soft-close mechanism on all runners to ensure smooth and noiseless operation.

In addition to kitchen cabinets, bed storage units, living room furniture, and bathroom drawers, this in-house range offers versatile applications for modern interiors. As a wholly owned subsidiary of Häfele global network, Häfele India provides architectural hardware, furniture fittings, kitchen systems, home appliances, interior lighting, sanitary solutions, and surfaces. The company offers expert consultation and end-to-end interior solutions across India and South Asia.

Hettich India Introduces the SlideLine 16 Plus: A New Era in Silent Sliding

With its SlideLine 16 Plus Inset Sliding System, Hettich, a well-established German lifestyle brand, combines advanced German engineering with local manufacturing in India. Featuring key innovations, such as a 12 mm door-to-door gap, a soft-close dampener for 30 kg and 50 kg doors, compatibility with both wooden and aluminum doors, and the ability to accommodate door thicknesses between 18 and 25 millimeters, this new sliding system is designed to offer high-quality wardrobe solutions at an affordable price. It comes with a 5-year performance warranty, ensuring durability, functionality, and modern design.

Andre Eckholt, Managing Director, Hettich India, SAARC, Middle East & Africa, comments: "With the SlideLine 16



Plus, we are addressing a crucial demand in the entry-level market, offering a top-quality product backed by German engineering standards. It's not only highly functional but also easy to install, making it an excellent option for those upgrading to sliding door systems."

Having become one of the market leaders in Indian furniture fittings for over 25 years, Hettich has become a prominent name in India. With two advanced manufacturing plants in India, the company continues to expand its locally produced 'Made in India' portfolio, offering world-class products to both domestic and international markets.

With its witty ad campaign, Blum India tackles the frustrations associated with everyday furniture

In its new ad campaign, Blum India, a subsidiary of Austrian furniture fittings leader Blum, injects humor into a traditionally overlooked topic-furniture fittings. By highlighting Blum's quality hardware solutions, the campaign sheds light on common furniture issues like creaky doors, stuck drawers, and awkward wall cabinets.

"Though our core market is B2B, we recognize that it's the end consumers who ultimately live with the furniture. This campaign is about starting a conversation with them in a fun and relatable way. Using humor, we've been able to connect the dots between everyday struggles and the value of quality fittings," says Nadeem Patni, Managing Director of Blum India.

Bauddhayan Mukherji, also known as Buddy, who directed the ads, praised Blum's creative freedom and clarity of vision. "When Nadeem and Neelam proposed a humorous approach, I knew we were onto something exciting. These films are a rare blend of creative ease and storytelling impact," Mukherji explains.

ENOX's Premium Range

Now Available in Stunning Black

Modern design is all about seamless elegance, sophistication, and timeless appeal-and ENOX is taking it to the next level. The premium ENOX range is now available in a stunning all-black finish, bringing a bold and contemporary touch to architectural hardware. Whether you're looking to upgrade Glass architecture hardware, shower enclosures, door hardware, or accessories, this new black edition offers sleek aesthetics, durability and uncompromising quality.

Durability Meets Design

Combining cutting-edge engineering, durability and bold aesthetics for door control solutions, shower enclosures and glass door hardware like patch fittings and more, ENOX products are designed for long-term performance. The portfolio ensures uninterrupted functionality while elevating modern interiors. Shower enclosures suitable for 8mm to 12mm toughened glass include adjustable hinge systems and water-resistant sealing. Patch fittings offer seamless glass-to-glass connections, supporting up to 100 kg with adjustable closing mechanisms for a secure and sophisticated finish. Whether for homes, offices, or commercial spaces, ENOX's all-black range is where design meets performance, delivering timeless elegance with robust reliability.

The Power of Black in Architectural Hardware

Black has long been a symbol of luxury, minimalism and modernity in interior design. With increasing demand for monochromatic aesthetics and contrast-rich spaces, the all-black ENOX range ensures your home or commercial space

remains at the forefront of contemporary design.

A black finish seamlessly integrates with various interior themes-whether it's an industrial loft, a contemporary office, or a luxurious residential setting. The sleek, matte black finish enhances the overall aesthetic appeal without overpowering the space, making it the ideal choice for subtle yet striking sophistication. Unlike trend-based finishes, black remains evergreen, ensuring your architectural hardware remains stylish for years.

A Complete Collection for Every Need

The new black ENOX range extends across multiple product categories for a cohesive, premium look. Perfect for modern interiors, providing a sleek, high-end finish for partitions and enclosures. Ideal for luxury bathrooms, enhancing aesthetic consistency and functionality. Elevate security with a bold, striking presence that complements a variety of door styles. A sophisticated upgrade for residential and commercial projects, ensuring every detail reflects superior craftsmanship.

Style That Lasts, Quality You Can Trust

ENOX's transition to an all-black range reflects the brand's dedication to innovation, premium craftsmanship, and modern aesthetics. Whether you are a homeowner, architect, or interior designer, this range provides the perfect balance of functionality and elegance.

With ENOX, black is not just a color-it's a statement, an experience.





Id. Jaishree Bihani

Imagine Design Studio

Principle Architect: Ar. Ankit Mittal

Project: Vinayak House

Location: Madhya Pradesh

Area: 2400 Sq. ft

Completion Date: 2024

Photo Credit: Aashendra Gour



In the vibrant city of Indore, we have created a stunning blend of modern comfort and subtle elegance.

This villa showcases contemporary sophistication with a distinctive brutalist façade, featuring bold geometric shapes, natural tones, and expansive glass panels. The exposed brick and concrete finishes, along with MS fabricated slab projections; impart a rustic charm to the design. The elevation is layered to provide a sense of depth through offset sections of the façade.

The ground floor houses a small office, a drawing room, and a guest bedroom. The drawing room is enhanced with modern moulding and a central arch



highlighted by book-matched Vesuvius stone.

On the first floor, the living room serves as a focal point with its ceiling-suspended partition and TV unit. This space is double-height, linking the two levels of the house seamlessly. The Mandir area features traditional Nilaya wallpaper and a striking onyx backdrop, adding a classic touch.

The second floor's bedrooms for the sons are highlighted with accent stones on the walls, while the rest of the room maintains a subdued design and color scheme. Overall, the villa is a blend of luxury, contemporary style, and refined elegance.



33 years
of Excellence

KICH[®]
STEEL... FOR LIFE



Redefine Your
Furniture Experience

Perfectly Crafted
Superior Quality
Effortless Functionality



Hardware
Products



Furniture
Fittings



Bathroom
Accessories



Railings

Email : sales@kichindia.com
Helpline : 1800 212 3638
Website : www.kichindia.com



Catalogue

Hardware Products | Glass Fittings | Furniture Fittings | Bathroom Accessories | Digital Solutions | Railings

Breakthrough in Concealed Hinges: Sugatsune HES2S-140



The Surface Mount Concealed Hinge HES2S 140 A125 is a game changer for modern residences and apartments, offering a perfect blend of functionality and aesthetic finesse. Designed for flush mount applications, it allows doors to integrate effortlessly into the surrounding architecture, creating a clean and sophisticated look.

The HES2S-140 features groundbreaking 3D adjustment, allowing vertical, horizontal, and depth modifications even after installation. This ensures a flawless fit and unmatched convenience for professionals and homeowners alike. It surfaces mounts on the jamb side for easy installation, opens to 125°, and features a compact, durable design that is simple to maintain. For added reliability, a door stopper is recommended to protect the hinges and extend the lifespan of the door.

Crafted with meticulous attention to detail, the hinge is supplied with stainless steel flathead screws and a refined cover that conceals all screw heads for a pristine finish. Available in three elegant colors: dark grey, light grey and black, the HES2S-140 enhances the functionality and appearance of aluminium profile doors and can also be fitted in marble frames, particularly in bathrooms.

Its design ensures smooth integration, contributing to a modern and sophisticated aesthetic, ideal for stylish apartments where both functionality and elegance are paramount.

Reflecting Sugatsune's commitment to combining innovation and craftsmanship to elevate everyday living, the HES2S-140 has already gained global recognition. It proudly holds the prestigious Interzum Award 2023 and the iF Design Award 2023, judged by an international jury of experts in design, material science, and architecture, which is a testament to Sugatsune's dedication to pushing the boundaries of hardware innovation.



The HES2S-140 is available at Sugatsune Experience Centres in Mumbai, Delhi, Chennai, Pune & Bangalore. For more information, visit global.sugatsune.com/in/en.

About Sugatsune

Sugatsune is a global leader in innovative hardware solutions, renowned for its commitment to quality, functionality, and design excellence. Its diverse product range includes hinges, handles, locks, drawer slides, and sliding door systems, all crafted to enhance architectural, residential, and industrial spaces with exceptional durability and performance.

In India, Sugatsune has been redefining interiors for over a decade, offering high-performance solutions tailored to the needs of architects, designers, and builders. With experience centres located in Mumbai, Delhi, Chennai, Pune and Bangalore, Sugatsune provides expert consultation and ensures the seamless integration of its advanced hardware into contemporary projects.





By 2035, the automatic door control market is expected to be worth USD 32.2 billion

By 2035, the global automatic door control market is expected to reach USD 32.2 billion, reflecting a compound annual growth rate of 6.9% over the forecast period. Security solutions are driving this growth, as is the widespread adoption of smart building technologies, and an increased focus on energy efficiency across residential and commercial properties. The use of automatic door control systems is rapidly becoming a standard feature of modern infrastructure projects, providing seamless, hands-free entry and exit.

With the use of photoelectric sensors, infrared sensors, and other sensors, automatic doors are gaining popularity in the market. Automatic door openers are used in commercial and residential spaces. They consist of a transmitter and receiver pair at the front and back of the door.

Its application is convenient since it is based on intention analysis and human detection. Passive infrared sensors assist in this process. There are a number of factors influencing the growing popularity of automatic doors.

In the automatic door control market, energy efficiency and security enhancements are driving growth. As part of global sustainability goals, energy-efficient automatic doors reduce energy consumption and operational costs. Moreover, advanced security features, such as biometric access controls and integration with building security systems, enhance the safety and reliability of automatic doors systems.

The automatic door control market is dominated by key players such as ASSA ABLOY AB, Dormakaba Holding AG, Stanley Black & Decker, Inc, GEZE GmbH, and Horton Automatics.

The dynamics of the automatic door control market are heavily influenced by government regulations and safety standards. In order to ensure the reliability & performance of automatic door systems, accessibility regulations, building codes, and safety standards must be followed. Automatic door solutions are designed to meet these regulatory requirements, ensuring safety, performance, and compliance.





**Experience the future
of building design.
Experience GEZE.**

GEZE – CONNECTING EXPERTISE – BUILDING SOLUTIONS

In today's fast-paced world, buildings must do more than just stand tall—they must adapt, respond, and welcome. At GEZE, we are redefining the modern building experience with innovative automatic door solutions that prioritize safety, accessibility, and user comfort.

With decades of engineering expertise and a forward-thinking approach, GEZE stands as a global leader in smart entrance systems. Our portfolio includes cutting-edge sliding doors, automatic swing doors, and sensor-based solutions that seamlessly respond to users' movements, ensuring effortless access for people of all abilities. Whether it's a child in a stroller, a person with mobility challenges, or someone simply carrying their groceries, GEZE ensures every entrance is intuitive and barrier-free.

More than just automation, GEZE solutions represent a commitment to inclusivity and universal design. From healthcare facilities to commercial spaces, our systems help architects and designers build environments that are welcoming, efficient, and safe.



V.S. Rajan
Managing director
GEZE India Pvt Ltd.

We also integrate intelligent safety features such as emergency opening mechanisms and fire protection solutions, ensuring that the building not only performs efficiently in daily use but also responds reliably in critical moments.

GEZE's mission is to create livable buildings—smart spaces that enhance the lives of those who use them. Our dedication to continuous innovation and sustainability keeps us ahead of industry trends, making us the trusted partner in the transformation of modern architecture.

With GEZE, it's not just about doors opening—it's about possibilities unfolding.





Unlock Safety with Style

When safety calls, GEZE opens the way

GEZE's automatic sliding door systems with break-out function are engineered for escape and rescue routes, delivering top-tier safety without compromising on design. Perfect for secure interiors, exteriors, and sleek façade integrations, they ensure smooth access and rapid evacuation when it matters most.



Automatic Door Systems | Manual Sliding Systems | All Glass Systems | Revolving Doors |
Ventilation Systems | Swing Doors | Safety Technology

📍 **GEZE India Private Ltd.**
MF 2& 3, Guindy Industrial Estate,
Ekkattuthangal | Chennai 600 032



🌐 www.geze.in
☎ +91 44 4061 6900
✉ office-india@geze.com



Designing Atmosphere: The Nest and the Future of Urban Homes



Ar. Vardha Aggarwal
Sculpt Design Studio

"Home is where you can truly feel yourself and a space that reflects your identity", says *Ar. Vardha Aggarwal*. This concept finds a different rhythm with Sculpt Design Studio as their designs rise above the conventional to offer unique spaces. They are redefining the essence of urban living by atmospheric spaces that evoke emotion while addressing the pragmatic needs of contemporary living. From integrating sensory experiences to adding a dialogue between light and material, their spaces offer a sophisticated elegance.

The Essence of Atmospheric Design

"The essence of contemporary modern design lies in its ability to balance minimalism with warmth and function with beauty," as I often emphasise when approaching new projects. This philosophy guided our creation of 'The Nest'- a residence that demonstrates how urban homes can be transformed into spaces of both grandeur & intimacy. When our clients approached us with a vision for spacious areas for hosting gatherings, we recognised an opportunity to create something beyond the conventional apartment layout.



Crafting Sensory Experiences

Atmospheric design is fundamentally about engaging the senses. At The Nest, this journey begins in the entrance lobby, where warm lighting casts a gentle glow against lime plaster walls. The marble inlay underfoot and the graceful arched ceiling overhead create a vertical rhythm that immediately signals the transition from the outside world into a curated experience. As one moves through the residence, the open layout of the living area emphasises connection and socialisation, crucial elements in today's urban homes. Here, we've employed a muted palette punctuated by thoughtful colour moments, like the curved sage

green sofa that adds visual interest without overwhelming the senses.

The Dialogue Between Light and Material

The future of urban homes will increasingly rely on the thoughtful interplay between lighting & materiality. In The Nest, cascading metallic chandeliers in the living room and spherical neon lights in the hallway create layers of illumination that transform spaces throughout the day. These lighting elements work in concert with materials like brass fixtures and soft beiges to establish what we call "minimalist luxury"- a concept that will define urban living in the coming years.



Personal Narratives in Private Spaces

Perhaps most significant to the evolution of urban homes is the attention paid to private spaces- bedrooms and bathrooms that tell personal stories. Each bedroom in The Nest narrates a unique tale: one with clean lime plaster walls and pastel green furnishings; another with bold pastel pink and magenta hues; a third reflecting its occupant's passion for anime through graphic elements against sophisticated black and grey backgrounds. In these intimate

spaces, we've incorporated elements like floating dressers & fluted glass panels that maximise functionality while maintaining visual lightness.

The Future of Urban Home Design

As architects and designers, we must anticipate the changing needs of urban dwellers. Looking forward, I envision homes that continue to blur the boundaries between functional zones while creating microclimates of emotion within a single residence. The successful urban home of

tomorrow will be adaptable, responsive to its occupants' needs & deeply connected to their identity.

At Sculpt Design Studio, we remain committed to crafting spaces where every texture, finish and play of light invites contemplation and comfort. When design achieves this delicate balance, we transform houses into homes- spaces that resonate with the soul while meeting the demands of contemporary urban life.



Official Website for Security Solutions Launched by Secureye

Secureye, Fortune Marketing's premium brand and a well-known name in the security and surveillance industries, has launched its official website, www.secureye.com. This special gateway is designed to deliver a seamless and user-friendly online experience while also allowing you to explore Secureye's superior security solutions.

The website launched makes safeguarding your house or company easier than ever. It offers users a broad range of cutting-edge offerings, including AI biometric attendance machines, smart door locks, IP cameras, access control systems, and entrance products. Users can quickly browse Secureye's services on this website and choose the best security solutions adapted to their specific needs.

The website includes a complete product demonstration of Secureye's Biometric Attendance systems, Boom Barriers, smart locks, video door phones, IP cameras, and fiber products. Secureye's new website contains a complete catalogue of over 500 products.

Revolutionary Dark Hunter CCTV Camera Unveiled by Hi-Focus

Hi-Focus, a pioneer in cutting-edge surveillance technology, proudly announces the release of its cutting-edge Dark Hunter CCTV Camera, which is designed to provide unrivaled performance in low-light and nighttime surveillance. The Dark Hunter, with its sophisticated features and revolutionary technology, is ready to revolutionize security systems for home, commercial and industrial use.

The Dark Hunter CCTV Camera establishes a new standard for night vision surveillance, providing crystal-clear images even in complete darkness. This camera, equipped with cutting-edge infrared (IR) technology and clever algorithms,

overcomes the constraints of low-light conditions by providing detailed and accurate imagery for complete peace of mind.

- * **Ultra-High-Definition Resolution:** Provides clear, detailed pictures that are great for distinguishing important features like faces and license plates.

- * **Wide Dynamic Range (WDR):** Balances bright and dark parts in the frame to ensure consistent performance in tough lighting circumstances.

- * **Weatherproof Durability:** With an IP67-rated enclosure, the Dark Hunter can withstand extreme weather, making it ideal for indoor and outdoor use.

Hikvision Introduces the latest Pro Series Network Cameras Featuring ColorVu 3.0 technology

Hikvision has unveiled its latest Pro Series Network Cameras featuring ColorVu 3.0 technology. The new Pro Series Cameras with ColorVu 3.0 take video security to new heights, offering increased image quality, more intelligent functionality, superior audio capabilities and improved product design and materials.

The new Pro Series cameras have ColorVu 3.0, which includes Hikvision's powerful AI image processing capabilities, HikAI-ISP. This includes AI noise reduction and dynamic motion trail reduction, which dramatically improves both dynamic image clarity and static detail. Users should expect considerably enhanced image quality, even under difficult lighting situations.

This is achievable because HikAI-ISP can absorb large volumes of data for deep learning training. The amount of parameters automatically collected greatly exceeds that of a standard ISP, implying that the HikAI-ISP can do image restoration with high precision, improving every detail.



Stylish And Energy-Efficient BLDC Fans, AirWiz Series Launched by V-Guard

V-Guard Industries Limited, India's top consumer electronics and electricals brand, has launched the AirWiz Series, a cutting-edge line of energy-efficient BLDC ceiling fans designed to enhance comfort, convenience, and style in Indian homes. The series consists of three deliberately developed models: AirWiz Light, AirWiz Prime, and AirWiz Plus, each designed to fulfill different lifestyle needs.

These fans are designed for the modern connoisseur, perfectly merging beautiful design with a mix of matte and glossy finishes to add flair and sophistication to contemporary interiors. Crafted at V-Guard's cutting-edge Roorkee factory, which spans 2.25 lakh square feet, this illustrates the company's commitment to quality and innovation. These fans are both decorative and practical. It can be easily controlled by remote and has easy timed options to turn off automatically after 4 or 8 hours, making it ideal for conserving energy when sleeping or using it for an extended period of time.

Fans' favourite newcomer by Goldmedal

Each of our homes is a reflection of our taste and style. Our homes are often adorned with statement pieces, but ceiling fans are often overlooked as they are not structurally related to décor. Now you don't have to settle for basic fans because there is a stylish new entry in the fans category!

With the Phantom super decorative ceiling fan, you're not just getting cool air. It enhances comfort, adds an element of style, and makes cooling your home more enjoyable. Three stunning antique finishes make this elegantly designed six-

blade fan blend seamlessly with modern home decors. With the Phantom fans' remote control, you can enjoy comfort, convenience, and control at your fingertips. You can easily switch the fan on/off, control its speed, change the LED under-light colour and brightness using the remote. Inside as well as outside, the fan is packed with features. To ensure proper support for the motor and fan shaft, the Phantom uses high-grade copper windings and double ball bearings.

Polycab India Unveils Super ROI Fans With Superior Air delivery And Superior Savings

Polycab India, a market leader in electrical solutions, is expanding its fan offering with the introduction of the Super ROI series. This strategic project, designed to establish new benchmarks, seeks to redefine Return on Investment (ROI) for the fans category. This collection promises an ideal balance of great performance, energy efficiency, and modern aesthetics. With rising energy costs and shifting consumer tastes, Polycab stays committed to developing new solutions that provide superior value to clients.

Polycab's Super ROI Fans are driven by BLDC technology. They not only help you save up to 50% energy and electricity*, but their chosen BLDC versions provide 25% more air supply. Reverse rotation might also help you keep comfortable during the winter. These fans, which include a 100% copper winding motor, offer longevity and reliability and come with a four-year warranty. Polycab fans come in a variety of modern aesthetic designs and over 30 colours to match your home decor. These Polycab Super ROI fans provide Return on Performance, Return on Technology and Return on Product, making it a worthwhile investment.



WEATHER COOL SALES PVT LTD

Complete HVAC Solutions.

Why choose installation by Weather Cool Sales Pvt Ltd?

- **Superior Energy Efficiency**
Our chillers consume less power than VRF systems, cutting costs.
- **Extended Coverage**
UPVC pipes offer limitless length for extensive coverage, unlike MS pipes.
- **Reliable Operation**
100% Redundancy ensures continuous operation, even if a compressor fails.
- **Quiet Comfort**
Enjoy a quieter environment with our low-noise systems.
- **BMS Integration**
Easily connects to Building Management Systems for streamlined control.



AGNELO RODRIGUES

Managing Director
Weather Cool Sales Pvt Ltd

Founded in 1996, Weather Cool Sales has become a leader in HVAC and clean room solutions in India. We provide complete, customized services from design to installation and maintenance, with a focus on energy efficiency and innovation. With over 2,000 successful projects, our in-house design team ensures precise, bespoke solutions for prestigious clients, solidifying our industry leadership and commitment to delivering high-quality environments at the best value.

Projects done using Modular Chillers



TAJ Holiday Village Resort & SPA, Goa



TAJ Devi Ratn, Jaipur



Samsung Introduces Bespoke AI Windfree™ AC Range, Introducing 19 Models Across Segments

Samsung, India's top consumer electronics company, has announced its 2025 portfolio of BESPOKE AI WindFree™ Air conditioners, which combines cutting-edge AI technology with premium design. The new line of 19 models, which focuses on intelligent cooling, energy efficiency and connected living, meets the changing needs of Indian consumers. These air conditioners are intelligently designed to provide comfort, convenience and innovation while addressing the problems of India's hot summers.

This line utilizes AI-driven advancements to automatically adjust to changing temperature conditions, ensuring consistent comfort and optimal efficiency. The WindFree™ Cooling technology disperses air softly through 23,000 micro holes, eliminating direct drafts. The AI Fast & Comfort Cooling feature quickly cools the space and automatically converts to energy-efficient settings for sustained comfort. Designed with modern lifestyles in mind, the line includes SmartThings connectivity and innovative features like Map View for remote monitoring and Quick Remote for simple control.

Haier India Introduces Gravity Series of Air Conditioners

Haier Appliances India, the world's leading major appliance company for the past 16 years, has revealed the much-anticipated Gravity Series of air conditioners. As India's only AI Climate Control Air Conditioners with Fabric Finish, these unique ACs effortlessly merge intelligent cooling technology with fabric finish, establishing a new benchmark for modern home climate solutions. The Gravity Series comes in seven

attractive colors-Morning Mist, Moon Stone Grey, Midnight Dream, Galaxy Slate, Aqua Blue, Cotton Candy and White-and provides unparalleled cooling efficiency while providing a premium touch to contemporary environments.

Haier's Gravity Series air conditioners include AI Climate Control, which intelligently adjusts to user preferences for optimal comfort without the need for human adjustments. The AI Climate Assistant learns usage trends and fine-tunes settings in real time, whereas AI Electricity Monitoring tracks power consumption in real time, allowing you to manage and control your electricity expenses. Powered by a cloud-based server and powerful AI ECO capabilities, it constantly adapts to maintain the optimal mix of comfort and efficiency while decreasing energy use.

Sharp Returns To India's Air-Conditioning Market With New Products

Sharp Corporation, a Japanese multinational, stated on Tuesday that its wholly-owned subsidiary Sharp Business Systems (India) will re-enter the Indian air-conditioner industry. With the introduction of the Reiryuu, Seiryu, and Plasma Chill Series, the business re-entered the Indian air-conditioning industry, which is growing by double digits. All three models are designed to withstand India's harsh weather conditions, it noted.

The company has stated that India is a vital market, and they are committed to strengthening their presence here. Also, the company wants to position Sharp as a trusted brand that improves lives through innovation, providing products that reflect Indian consumers' ambitions and lifestyles.

PIECO Office: Where Function Meets Emotion



Varun Agarwal, Bakul Chandra & Parul Agarwal

Renascent Consultants

Project : PIECO Office **Location :** New Delhi
Area: 7000 Sq.ft **Photo Credit :** Nuke Town
Design Team : Parul Agarwal, Bakul Chandra, Tanya Sharma, Niharika Singh, Neha Bansal



Designed by Renascent Consultants in collaboration with Yellow Ochre Wall (Neha Bansal), PIECO Office is a modern workspace that seamlessly weaves functionality with thoughtful aesthetics. The brief was clear—create a collaborative, efficient, and identity-driven office within a space challenged by low ceiling height and limited natural light.

The design adopts a minimal, biophilic approach, using spatial planning to divide the space into collaborative zones, focused workstations and breakout areas—ensuring fluid transitions and boosting productivity. Key challenges, such as the constrained ceiling, were resolved through meticulous MEP coordination, while glass partitions, indirect lighting and reflective surfaces addressed the lack of natural light, making the space feel brighter and more expansive.

Materially, the office juxtaposes sleek glass and warm wood to create a balanced, refined ambiance. Modular construction allows flexibility, adapting to evolving needs. A nature-inspired color palette enhances focus and well-being, reinforcing the biophilic intent.

The standout feature is the sculptural reception table—an embodiment of the brand's identity and design finesse.

Despite spatial constraints, PIECO Office exemplifies how intelligent planning and nuanced detailing can transform limitations into strengths—offering a workspace that inspires, adapts and connects.





GR-T

FEEL THE COOLNESS
OF THE STYLISH RANGE.



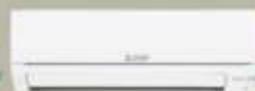
MSY-GR Series



MSY-JX Series



MSY-JS Series



MSZ-HP Series



Cassette Air Conditioner



Ductable Air Conditioner



City Multi VRF System



Jet Towel



Air Curtain

MITSUBISHI ELECTRIC INDIA PVT. LTD.

3rd Floor, Tower A, Global Gateway, MG Road, Gurugram - 122002, India

Customer Care Toll Free No.: **1800 102 2626** | Website: **www.MitsubishiElectric.in**

TECHNICAL CENTRES: Ahmedabad - +91-79-67777874, Bengaluru - +91-80-40201600, Chennai - +91-44-49232222, Delhi - +91-11-66057900, Mumbai - +91-22-66116200

0% Consumer
Finance Available

BAJAJ
FINSERV

HDB
FINANCIAL SERVICES

AXIS
BANK

EMI Option
Available

pine labs

For E-waste Collection & Disposal process, Customer can get complete details of company provided on customer's request of e-waste product (i.e. Mitsubishi Electric) under the E-waste Management & Exchange Scheme for recycling of e-waste on Company website (www.MitsubishiElectric.in) or by calling on Toll free number 1800 102 2626.



RESIDENTIAL AIR CONDITIONING SYSTEM



**Comfort For Residence,
Efficiency For Business.**

Stay comfortable, stay productive.

MITSUBISHI ELECTRIC INDIA PVT. LTD.

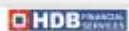
3rd Floor, Tower A, Global Gateway, MG Road, Gurugram - 122002, India.

Customer Care Toll Free No.: 1800 102 2626 | Website: www.MitsubishiElectric.in

TECHNICAL CENTRES: Ahmedabad - +91-79-67777874, Bengaluru - +91-80-40201600,

Chennai - +91-44-49232222, Delhi - +91-11-66057900, Mumbai - +91-22-66116200

0% Consumer
Finance Available



*For E-waste Collection & Disposal process: Customer can get complete details of company process on collection, disposal of e-waste product & "Mitsubishi Electric" make Air Conditioner and Inverter / recharge scheme for returning of e-waste on Company website (www.MitsubishiElectric.in) or by calling on toll free number 1800 102 2626.



COMMERCIAL AIR CONDITIONING SYSTEM



Design in Sync: This jewellery office by Source Architecture elevates design that compliments the craft



In this elegant corporate office, Source Architecture creates a harmonious balance between serenity and energy. The reception welcomes with a curved white desk, striped couch, textured rug & verdant plants, all set upon grey-brown marble flooring-establishing a sophisticated yet warm foundation.

Two conference rooms follow, anchored by stone feature walls and furnished with white stone tables surrounded by brown vegan leather chairs. Antique artifacts add timeless elegance, while black-framed fluted glass partitions provide privacy without sacrificing visual flow. Black chandeliers cast dramatic light from above.

The main workspace continues this refined aesthetic with a dark wooden fluted ceiling and minimalist black



pendant lighting. Off-white workstations contrast with dark grey carpeting, while greenery softens the structured environment.

Private cabins for senior staff feature clean lines & warm wooden elements, creating intimate yet authoritative spaces.

The CEO's cabin stands as the design pinnacle-showcasing a bespoke cabinet displaying curated antiques against fluted marble. A commanding marble table paired with a plush green leather chair creates a focal point, while a sectional lounge area invites more casual interaction.

Throughout, meticulous material selection and thoughtful design details craft an environment that masterfully blends contemporary sophistication with timeless elegance.



Sneha Ostawal

Source Architecture

Project : Navrathan

Corporate Office

Location : Bengaluru

Area : 2800 Sqft



The Rise of Curated Living: Why Customisation is the New Luxury in Indian Homes



Jasleen Chalotra and Gurpreet Singh

Design Essence

Project : The Alabaster Manor Location : Delhi

In an era where the bonds of family are often stretched across distances, this residential design reimagines the concept of home as a sanctuary of togetherness. Adhering to the idea of the same, the team of *Design Essence* under the guidance of the visionaries *Jasleen and Gurpreet Chalotra* designed an abode that shared a connection with private retreats for personal moments and ensured a balance of community and privacy. Designed for three families across three thoughtfully curated floors, it celebrates the essence of multi-generational living- where individuality thrives within a collective embrace. Each floor tells a unique story while resonating with a cohesive design narrative, blending timeless aesthetics with modern functionality.

The design begins with an entrance that revels in the allure of luxury and exquisiteness. Every element in the design reflects a commitment to nurturing relationships across generations. Stepping into the living area on the ground floor, the space evokes a sense of opulence with refined minimalism. Bespoke sofas with curved edges bring fluidity to the space. Bathed in neutral hues and warm lighting, the living area curates an atmosphere, perfect for intimate conversations. Further, floor-to-ceiling windows bring the natural lighting in, creating an airy vibe.



Transitioning towards the dining area, the space followed the same neutral theme with luxe accents. It features a marble tabletop complemented with sleek and bespoke chairs. Additionally, with linear wall punning designs and brass accents, the space imbues a sense of glamour and style. A captivating statement fixture atop casts a bright glow over the dining area, adding to the opulent charm of the area. Further, the lobby area around the staircase captures the attention with textured wall designs, defining the double height of the space. This is complemented by a huge green wall, manipulating the microclimate of the space while adding an aesthetic element to the design.



The third floor exudes grandeur, showcasing marble-clad walls complemented by sleek, sophisticated lighting. The living area here features rounded sofas with polished brass legs, radiating elegance and comfort. A striking wallpaper panel adds an artistic contrast, enriching the overall design. Throughout the residence, lobbies are adorned with various consoles, blending functionality and aesthetic appeal. One console is crowned with a decor piece inspired by a falcon, accented with red embellishments and a white backlit design, creating a bold focal point. Another console, with its sleek rod-like base, is topped with a serene Buddha statue, infusing the space with refinement and tranquility.



As one reaches the first floor, a small family area welcomes, offering respite along with togetherness. With a captivating back panel design and warm yellow lights, the TV console has a unique charm. Plush grey sofas add to the refined setting, offering comfort with style. The second floor follows a similar arrangement with different materials and designs. Here, pristine white sofas capture attention, supplementing the textured white walls. The dining areas and the living room here follow a cohesive aesthetic, meeting the overall theme of the residence. Tufted dining chairs evoke a luxe design statement. Adjacent, the counter area with rose-gold profile shutters curates a refined statement. Bespoke decor elements and embellished wall decors create a unique design statement on the floor.



In sum, this home is a sanctuary for modern living, where each family finds their unique retreat, and the building as a whole becomes a shared haven of style and warmth. It exemplifies how thoughtful design can create a perfect balance of individuality and unity under one roof.


design essence



Vikas Oberoi (CMD)
OBEROI REALTY

Mumbai-based listed real estate firm Oberoi Realty sold luxury homes worth Rs 1,348 crore in its newly launched 75-acre housing project in Thane near Mumbai.

The company launched the project 'Oberoi Garden City Thane' and will be developing and marketing the project in phases. It recorded gross booking value for 5.65 lakh sq-ft (carpet area) over the first three days.

The first phase of the development will comprise five residential towers comprising 3 BHK and studio apartments with sizes starting from 1,475 sq-ft.

The project spread around 75 acres named Oberoi Garden City, Thane will offer homes with over 30 amenities, a 5-star deluxe JW Marriott Hotel Thane Garden. City, an exclusive private membership club and an Oberoi International School. Its board has approved a proposal to raise up to Rs 6,000 crore.

The company plans to raise funds through equity shares, eligible securities, and other securities. The proposed funds will be raised in one or more tranches by way of private placement, including a qualified institutional placement, or through any other permissible mode or combination of modes as may be considered appropriate.

In August, the real estate company received the approval of the National Company Law Tribunal for a resolution plan to acquire the bankrupt Nirmal Lifestyle Realty by paying Rs 273 crore to the creditors of the company.

It plans to come up with a 1.8 million sq-ft mall, a hotel and a commercial office space in Worli. Glaxosmithkline had sold its Worli plot for over Rs 107 crore to I-Ven Realty, a JV between ICICI Venture Funds Management Company & Oberoi Constructions in 2013.

<https://www.oberoirealty.com>



Have you ever experienced a sunrise or a sunset from the 60th floor?

This can be true at Forestville by Oberoi Realty. Located strategically, overlooking Thane Creek and Hills, the project blends nature and architecture while enhancing everyday lifestyle. With about 18 acres of open space, Forestville has lots more to offer! So, let's explore its amenities, pricing and locality reviews.

Forestville by Oberoi Realty - is all set to take thane to new heights A new housing project in Kolshet, Thane - About the project

Spanning across an expansive 18-acre of land, Forestville by Oberoi Realty in Kolshet is a new residential project, slated for completion in December 2028. Once completed, the housing society will have a total of five towers, two of which have been currently launched. Each tower has G+60 floors. The project has 3 BHK and 4 BHK apartments comprising a total of 1257 units.



Property options and pricing

This project offers 3 BHK and 4 BHK exclusive residential apartments. Here are the configurations with their respective starting prices:

Configuration	Carpet Area	Starting Price
3BHK Apartment	1000-1100 sq.ft.	Rs 1.87 crore
4BHK Apartment	1300-1400 sq.ft.	Rs 2.5 crore

<https://www.oberoirealty.com/forestville-nri>



CARYSIL
GERMAN ENGINEERED



prayag[®]



GLEN

An investment of Rs 500 crore is planned by Carysil to increase production

As part of its long-term growth strategy in India, premium kitchen solutions provider Carysil is planning to invest Rs 500 crore in the manufacturing of kitchen sinks, faucets, and appliances. A total of Rs 100 crore has been allocated under the plan to double Carysil's sink production capacity to 2 million units per year.

In addition, the company plans to invest another Rs 50 crore to expand its stainless steel sink production to 2.5 lakh units per year. An investment of Rs 30 crore will be made to increase production of kitchen faucets to 50,000 per year, and a further Rs 20 crore will go towards manufacturing 50,000 built-in kitchen appliances, according to the statement.

"Our vision is to establish Bhavnagar as the largest global hub for kitchen sink manufacturing. 'Make in India' is at the core of our growth strategy, and we are committed to raising the bar in quality and innovation in kitchen solutions," Carysil Ltd Chairman and Managing Director Chirag Parekh says.

Expanding global reach of Indian quartz sink manufacturer through strategic U.S. partnership

An important agreement has been signed between Carysil Limited and Karran Inc., USA, a prominent player in the global kitchen sink industry. A major US retail chain with approximately 1,800 stores across the country will receive Quartz kitchen sinks from this collaboration. In May 2025, Carysil, known for its advanced German manufacturing technology, will begin producing 1,50,000 Quartz sinks per year. To support this production, approximately USD 5,10,000 (Rs 4.5 crore) will be invested in molds, machinery, and utilities.

The partnership, which began in 2017, enhances Carysil's presence in the United States. Chairman and CEO of Carysil, Mr. Chirag Parekh, announced this development with enthusiasm, highlighting the company's commitment to high-quality products and expanding its global market share. With this agreement, Carysil strengthens its position in the kitchen and home improvement sector, leveraging its manufacturing and design expertise.

An industry leader in kitchen sinks: Prayag India

There is much more to the kitchen sink than just utility. It combines quality, style, and practicality. Budget-friendly sinks from Prayag India offer reliability and functionality without draining your bank account.

Prayag's kitchen sinks combine affordability with durability, features such as sound reduction pads, anti-scratch materials, and a range of depths. Surfaces are coated with anti-scratch material to prevent scratches and maintain shine.

More to it, as a leading manufacturer of premium stainless steel sinks, Prayag India has redefined the kitchen sink market by offering high-quality products that are affordable and functional. Crafted from premium 304-grade stainless steel, Prayag sinks are built to last. A number of thoughtful features, such as noise-reducing pads and anti-scratch surfaces, make them an excellent choice for Indian kitchens. Besides offering high-quality sinks at a reasonable price, Prayag also offers middle-range sinks. Prayag's middle-range kitchen sinks are an excellent choice for those seeking a balance between price and quality.

Handmade Kitchen Sinks by Glen: Crafted with Precision

Handcrafted sinks by Glen are crafted using premium stainless steel materials. They have a distinct appearance and are stronger than industrial production sinks due to the unique welding and finishing process. With their sharper edges and deeper bowls, these premium sinks develop a premium look due to their handmade fabrication process.

Looking for a deeper basin, a different shape, or a special finish? Handmade sinks offer a wide range of options to match the look of any kitchen. Adding additional padding or protective coatings to handmade sink surfaces can reduce noise from dishes and water. An angular corner on a handcrafted sink, either pointy or rounded to R10 radius, maximizes the amount of usable interior space.

Besides being a utilitarian necessity, Glen Appliances' kitchen sinks enhance both your cooking space's aesthetics and functionality. Designed with precision, Glen kitchen sinks are durable, stylish, and performance-driven.



Ar. Ankit Mittal

Imagine Design Studio

Interior Designer: Id. Rushali Jain

Project: Chabbra House

Location: Madhya Pradesh

Area: 2420 Sq. ft

Completion Date: 2024

Photo Credit: Imagix Studio



This villa masterfully blends neo-classical grandeur with contemporary elegance, creating a serene and luxurious retreat. The exterior boasts a sophisticated neo-classical façade, setting a tone of timeless luxury. Inside, a grand classical door opens to a lavish foyer, leading into bold living and drawing rooms adorned with striking color palettes and intricate wall paneling.

The villa features impressive triple-height courtyards, with geometric wall

patterns that enhance the grandeur of the space. A gracefully designed staircase, incorporating potted plants, adds a touch of nature and artistic flair. The dining area beneath the expansive triple-height is encircled by the opulent staircase, creating a dramatic setting for gatherings.

Bedrooms are uniquely styled, with the ground floor bedroom in calming blue, offering tranquility and sophistication. The master bedroom on the first floor combines sleek moulding and minimalist furniture,

reflecting a luxurious and uncluttered ambiance. Additional bedrooms showcase individual themes and color palettes, reflecting personal styles.

Furniture throughout the villa emphasizes comfort and style, with sleek chairs and minimalist tables that enhance the grand aesthetic without overpowering it. The overall design ensures a perfect balance of visual splendor and functional comfort, creating a haven of luxury and tranquility that delights and nurtures.

India's No. 1
NIRALI
NG

STAINLESS STEEL KITCHEN SINKS

Another milestone our journey of excellence!

RIVELO WINS BEST PRODUCT DESIGN AWARD

By All India Stainless Steel Industries Association



**Multi
Functional
Sink**

Mfg & Mkt by : Jyoti India Kitchensink Pvt. Ltd H.O. Mumbai : +91 22 4969 1569 | 2430 5500 | 2437 5511 | 2422 0109
Email: NGsales@NiraliNG.com | sales@NiraliNG.com | info@NiraliNG.com | **Delhi Branch Office** : +91-93500 43092
salesdelhi@NiraliNG.com | www.NiraliNG.com | Follow us on : [@NiraliNGkitchensinks](https://www.facebook.com/NiraliNGkitchensinks) | [@Nirali_NG](https://www.instagram.com/Nirali_NG)

Designer Display Studio : Mumbai - 77384 39445 | Pune - 72089 95433 | Ahmedabad - 9898010206



Infra.Market, India's leading Building Materials Platform, is redefining its position in the wood panels industry with an innovative approach that combines a wide range of products and a digital-first strategy.



Mr. Shekhar Chandra Sati
CEO Wood
Infra.Market

Industry Leadership and Market Expansion

Leading Infra.Market's wood panel category is Mr. Shekhar Chandra Sati, an industry veteran with over three decades of experience. His expertise, particularly in expanding MDF market share within the wood panel industry, has been instrumental in accelerating the company's growth. Since taking charge in March 2023, he has driven rapid expansion, establishing a network of over 1,000 dealers in a short span.

State-of-the-Art Facilities Driving Efficiency

Strengthening its manufacturing capabilities with the acquisition of Rudrapur and Yamunanagar plants, the Rudrapur factory focuses on the manufacturing of laminates and Medium Density Fiberboard (MDF), with plywood production based at Yamunanagar. Located in North India, both the facilities benefit from the region's well-developed manufacturing ecosystem, availability of skilled labor, and access to raw materials at competitive rates, ensuring cost efficiency and high-quality production.

Strategic Growth and Dealer Profitability

Infra.Market's forward-thinking approach boosts dealer profitability by creating upselling opportunities in projects where it initially supplied concrete, walling solutions, or ceramics. As wood panel demand grows, dealers can diversify into high-margin products like decorative laminates and hardware. The company's digital platform connects dealers with architects, contractors, and carpenters to enhance lead generation. Dedicated sales teams also capture project-based leads, driving stronger dealer engagement and brand loyalty.

MDF is rapidly gaining traction for its cost-effectiveness, durability, and design flexibility, especially in modular furniture. With rising demand for value-added variants, Infra.Market's capital strength & innovation-led approach position it as a category leader. Its commitment to sustainability continues to fuel MDF's adoption among architects and OEMs seeking precision-driven solutions.

INFRA.MARKET

A BUILDING MATERIALS PLATFORM

Concrete | AAC Blocks | Tiles | Sanitaryware | MDF | Plywood | Laminates
Paints | Plumbing | Modular Kitchens & Hardware | Electricals & Appliances



ADVANTAGES



250+ MANUFACTURING
PLANTS



TECHNOLOGY
INTEGRATED



EFFICIENT
SUPPLY CHAIN



15+ PRODUCT
CATEGORIES



96063 50000



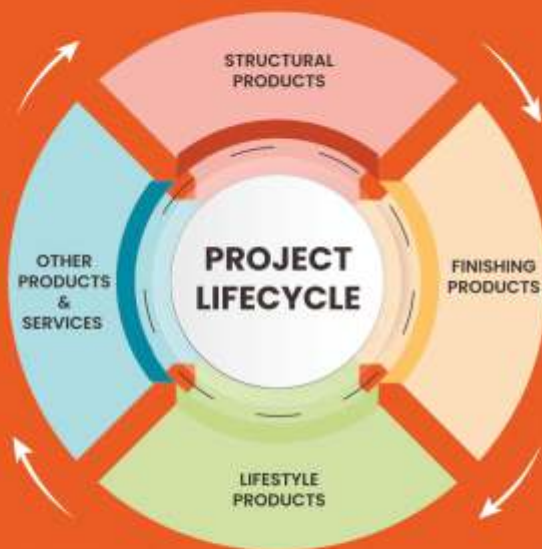
www.infra.market



INFRA.MARKET
BUILDING MATERIALS PLATFORM

INFRA.MARKET

A BUILDING MATERIALS PLATFORM



STRUCTURAL PRODUCTS



Concrete



Aggregates



Steel



Construction Chemicals



Cementitious Products

FINISHING PRODUCTS



AAC Blocks



Pipes & Fittings



MDF | Plywood Laminates



Roofing Products

LIFESTYLE PRODUCTS



Tiles | Bath Fittings Sanitaryware



Paints



Modular Kitchens & Hardware



Fans | Lighting



Big & Small Appliances



Consumer Durables

OTHER PRODUCTS AND SERVICES



Rental Equipment



Chemicals



Painting Services



Construction Services

BRANDS



96063 50000



www.infra.market



Lutyens Delhi House - A Timeless Classical Revival



Ar. Manish Mehta

Nouveau Design Group

Project : Lutyens House



Nestled in the heart of the prestigious Lutyens Bungalow Zone, this neoclassical villa by *Nouveau Design Group (NDG)* is a graceful confluence of classical elegance and contemporary design. Created for a growing family, the residence draws from the architectural grandeur of its historic surroundings, reimagined through a restrained, minimal lens. The façade boasts classical elements such as colonnades, balusters, and intricate motifs that establish a dignified, timeless presence.

Inside, Parisian-inspired classical interiors unfold in soft neutral tones, detailed with wall paneling and ornate ceiling work that evoke quiet sophistication. The home's soul lies in

its layered contrasts—wood-grained finishes and open-grain matte veneer textures in the library introduce warmth and tactility, while antique brass-finished glass doors connect formal spaces with understated opulence.

The furniture, carpets and lighting have been curated with a contemporary sensibility, enhancing the classical shell with modern flair. A notable collaboration between NDG and M&E from Melbourne has infused the design with global finesse, achieving a delicate balance between heritage and modernity. This residence is not just a home—it's a narrative in architectural harmony, celebrating the enduring appeal of classical form through a fresh, modern perspective.



Designing with a Sense of Place: 4th Dimension's Approach

"Architecture should speak of its time and place, but yearn for timelessness." - Frank Gehry The idea of crafting spaces with a sense of place and spatial dynamics requires a skillful fusion of creativity and mindfulness. For 4th Dimension, this philosophy is about authenticity, storytelling, and the concept of 'belongingness'. Their projects stand out by crafting interiors that are deeply contextual, anchored in local culture and emotional resonance. This ethos of 4th Dimension, along with the sense of place, is carefully executed in the design of *"Timeless Roots"* - a residence where vernacular traditions and modern sensibilities coexist in harmony. In this article, **Ar. Rinki Kotak, Founder and Principal Architect at 4th Dimension**, explains their approach to design with an iconic project.

Designing with a sense of place begins with the right spatial planning. The public and private zones in this home are clearly defined but visually interconnected. The living and dining areas are designed artfully, creating a sense of visual zoning. Printed carpets, patterned cement flooring and wallpapers tie all the elements together and bring a natural warmth to every corner of the space.



Ar. Mihir Kotak & Ar. Rinki Kotak
Principle Architects at 4th Dimension

Modern elements are included through statement lighting fixtures and décor elements, which create an enthralling blend in the design.

Further, the material palette in their designs showcases a connection between past and present. It includes designer tiles, motifs, arches, and natural stones to emanate a connection between both styles.

For instance, the kitchen includes neutral backsplash tiles with marble countertops, enhancing the space and creating an enthralling blend of elements. Glass partitions bring a sense of airiness, while warm lighting enhances the bathroom.

Moreover, cane is used as a main design element along with polished wood to lend a rustic effect, akin to traditional Indian homes. A wall painting juxtaposes the space with myriad colours, while a fresh green wooden TV console is integrated to add a touch of colour to the room.

The essence of timelessness is also reflected by the use of local elements and craftsmanship. Indian motifs are handcrafted in the design, adding culture to the space. Moreover, traditional Pinteresty design against a rope chair on the balcony creates a unique blend of design. In the bedrooms, wall panels with arches and canvas create a minimal elegance. Partitions akin to old mansions of Indian architecture are included to provide connectivity and privacy within spaces.

Although this home is rooted in a timeless blend, it incorporates modern technology for convenience without compromising on style. Automated lighting and temperature control subtly allow people to control lighting in spaces. Energy-efficient appliances are introduced to generate a positive design. Smart security & sound systems offer safety while keeping the spirit of the home intact.

In essence, to design with a sense of place is to design with care, curiosity, and consciousness. This home showcases the approach of 4th Dimension and honours memory, celebrates craft, and welcomes the future with grace.



Indian School of Business Mohali – Expanding the Legacy of Excellence

KBE constructs faculty & bachelor housing buildings for the latest addition to the ISB Mohali Campus



Rahul Bahl

Krishna Buildestates Pvt. Ltd.

Project : Indian School of Business

Architect: InFORM ARCHITECTS, Bengaluru

Location : Mohali, Punjab

Area: 1,50,000 Sq.ft

Photo Credit : Sunil Koul, PIC, Punjab



Krishna Buildestates Pvt. Ltd. has delivered two new G+7 buildings-Faculty Housing-2 and Bachelor Housing-2-at the Indian School of Business (ISB) Mohali campus, reinforcing the university's commitment to world-class, sustainable infrastructure.

Built to the highest green standards, the project integrates fly ash from thermal power plants into its concrete mix and employs lightweight AAC blocks for internal partitions, reducing structural load and enhancing thermal performance. A vertical formwork system utilising reusable aluminium panels was deployed, minimising reliance on wooden ply and pinewood, thereby reducing construction waste. The highest quality Ready-Mix Concrete (RMC)-sourced exclusively from Ultratech and RDC, India's two

largest suppliers-ensured structural integrity and durability. To optimize comfort and efficiency, high-performance Schuco doors and windows minimize thermal losses in extreme temperatures, while modular GRP tanks made from recycled, non-toxic materials support a sustainable water supply.

Executed in close collaboration with CBRE, this development adheres to ISB's vision for a streamlined, high-quality campus expansion. By combining engineering precision with eco-friendly practices, these new residences not only accommodate students and faculty but also serve as a benchmark for sustainable educational facilities, further cementing ISB's reputation as a global leader in business education.



Summer Ventilation Solutions: Designing Naturally Cool Spaces in Indian Heat



Ar. Sumit Dhawan

Cityspace'82 Architects

Project: Todd's Residence **Location:** Rajasthan **Area:** 25,000

Integrating Courtyards in Design

Drawing inspiration from the havelis of Rajasthan, modern architects are integrating indoor courtyards in their designs. These are quite helpful for ventilation & cooling the surrounding space. They trap cool air at the bottom and create a pocket of room for hot air to rise. More interior spaces can take advantage of the cooling benefits of a centrally located courtyard. This also leads to open layouts, fostering ventilation and cooling spaces naturally.

Opting for the Right Materials

Building materials that prevent heat transfer can significantly reduce the temperature of buildings. One of the solutions is a thatched roof, as they have air pockets, they offer good insulation and prolong the cooling of interior spaces. Additionally, unlike concrete, thatched roofs emit more heat rather than absorbing it. Stabilised mud bricks and terracotta tiles are two more materials that are suitable for hot Indian climes.

Using Water Bodies and Landscaping in Design

Integrating landscaping and water bodies can cool down homes in summer while providing fresh air. In this outdoor transition space, for example, a well-sheltered water lily pond offers relief from the heat. Summertime increases in evaporation from water ponds cause the surroundings to

chill. As they naturally release moisture, plants, trees and bushes near windows and doors can help chill the air entering the house. Additionally, strategically placing small cascades can help in ventilation and beat the heat.

Jaalis and Perforations

Jaalis and perforations have long been a part of ancient architecture in India, facilitating ventilation. These are being reimagined in modern designs with innovations and style. Jaalis are used facade, crafted in limestone or sandstone, offering cool breezes inside. Moreover, with technology, these are being altered with dynamics and kinetics, adding to better ventilation solutions. Lastly, using louvres, vents and open floor plans ensures unobstructed airflow. Stairwells, double-height spaces and atriums can amplify the stack effect, pushing hot air upward and out of the building. In the project, *Todd's Residence*, the facade includes an aluminium web-like design, promoting sustainability and ventilation.

In the relentless Indian summer, architecture has the power to comfort, conserve & coexist. As India urbanises and heats up, returning to this philosophy with a contemporary lens may be the most intelligent and humane way forward!



Bespoke Living, Curated Like Art: Inside the The Vernissage House by Maison Du Luxe



Ginne Jain and Nilu Kapur

Maison Du Luxe

Project: The Vernissage House

Location: Gurugram **Area:** 9,000 Sqft

Photo Credits: Deepak Aggarwal

Art and architecture come together seamlessly at The Vernissage House in Gurugram, a residence designed by Maison Du Luxe with Ginnie Jain and Nilu Kapur. Spread across 9,000 sq ft, the home takes cues from the quiet elegance of a gallery—where every piece, material and layout choice is deliberate. Designed to do more than just accommodate—it nurtures the soul. Every room, every object and every corner of this house has been curated to reflect the timeless beauty of its elements.

At the heart of this artistic sanctuary, the living room captivates with its inviting aura and exceptional craftsmanship. The space is more than a place for lounging—it's an experience. Bespoke sofas and armchairs, upholstered in luxurious fabrics and rich textures beckon for an intimate exploration. A handcrafted dining table, the focal point of the room, mirrors the homeowner's distinct taste for art, sophistication & elegance. It doesn't just serve its utilitarian purpose; rather anchors the room with its rich wooden patterns, offering a sense of stability and permanence amidst the elegance that surrounds it.



The bedroom, with its serene ambience, feels like a personal retreat through chosen design elements. Light wood finishes and clean-lined furniture create a tranquil sanctuary, where natural materials such as wood, stone, and marble take center stage. The restrained elegance of the design complements the calming neutral tones of the space, fostering an environment conducive to rest and relaxation.



The home bar, tucked within the living area, is another remarkable element of this residence. In keeping with the home's overall aesthetic, the bar combines classic design with a modern sensibility, creating a space that is both timeless and functional. The warm, rich tones of the wood are complemented by sleek marble surfaces, offering an elegant backdrop for entertaining. The bar area is designed not only as a functional space for mixing drinks but also as an intimate setting for conversation and relaxation. Ample storage for glassware & beverages is seamlessly integrated into the design, ensuring that the space remains both elegant and practical.



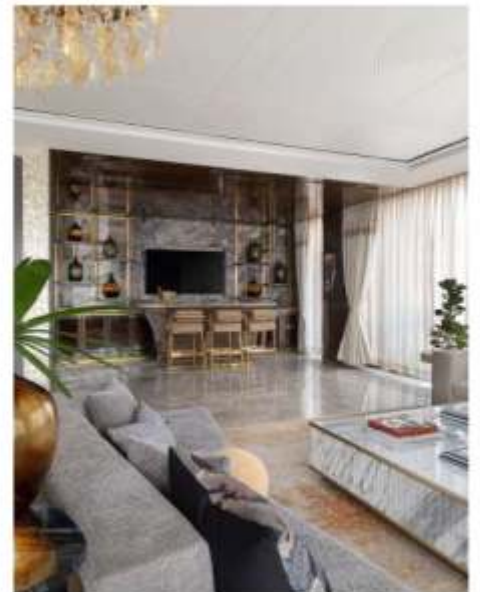


Throughout the apartment, Maison Du Luxe has artfully combined an array of materials, creating a tactile and visual symphony. Wood, quartz, marble, leather, and plush fabrics are all carefully integrated to form a cohesive narrative that flows through the entire home. Each material is chosen not only for its aesthetic qualities but also for its ability to contribute to the overall sense of comfort and warmth. The materials work together in perfect harmony, creating an environment that is both luxurious and inviting.

Perhaps the most striking aspect of this home is the way it transcends traditional notions of interior design. It is not simply a place to live; it is an embodiment of bespoke luxury, where every detail has been thoughtfully designed to create a space that is as unique as its inhabitants. Intricate wall panelling adds layers of sophistication and depth to the interiors, while carefully chosen artworks reflect the homeowner's personality, infusing the space

with a sense of intimacy and individuality. The collaboration between designers Ginnie Jain and Nilu Kapur, and the homeowner has resulted in a home that is not just functional but profoundly personal. Each room feels like a carefully curated exhibition, where every piece has been selected not just for its aesthetic value but for its ability to reflect the essence of the people who inhabit it.

In every element of this home, Maison Du Luxe has blended luxury, artistry, and functionality. From the bespoke furniture to the custom wardrobes, bars, and vanities, every element reflects the homeowner's unique taste and lifestyle. This home is as much a testament to the beauty of bespoke design, as it is to the craft of creating spaces that remain timeless. And what Maison Du Luxe has done with The Vernissage House is: to throw an invitation to waltz across rooms, get enchanted by the power of design and forget whether you're in a home or a gallery.





Simta Astrix logo

SIMTA ASTRIX : REDEFINING STYLE AND PERFORMANCE IN uPVC CASEMENT WINDOWS

Redefining style and performance in uPVC casement windows with Simta Astrix

With Simta Astrix uPVC casement windows, you can enjoy fresh air while keeping your space cozy and quiet. With strong seals, reinforced frames and multiple locks, you can enjoy windows that can handle any weather while providing excellent security. For small or medium-sized spaces, these windows are a great choice for improving ventilation, saving energy, and brightening your home.

As one of the leading uPVC casement window manufacturers, Simta Astrix combines German Technology with Indian Innovation to produce high-performance, low energy consumption windows. In contrast to traditional wood or aluminium windows, uPVC offers ultimate isolation, weather resistance and durability.

The uPVC casement window is one of the most functional and accessible window models available today. Side-dependent openings provide ventilation and a complete view. The Simta Astrix casement windows feature multi-point locking mechanisms that offer advanced security and effective dust, sound and heat separation.

Encore-Alcom launches India's first auto-robotic aluminium door and window manufacturing plant in Surat

Encore-Alcom, a leading manufacturer of aluminum doors and windows based in Hyderabad, has begun operations at its new manufacturing facility in Surat, Gujarat. A total of 500 people are employed at the 184,000 square foot plant. In phases, the company plans to invest INR 60 crores in the facility. As part of Encore's expansion into wooden door manufacturing, the company markets its products under the Encore brand in the south and the Alcom brand in the north.

"We used German technology for the state-of-the-art new plant which has a capacity to produce 35,000 square feet per day. We will showcase our latest and innovative products at AceTech trade fair scheduled from January 24 at Hitex in Hyderabad" says Avuthu Shiva Koti Reddy, founder and Chairman & Managing Director of Encore Woodcrafts.

In total, the company has completed 3,500 projects, including several in the US, UK, Dubai and Europe.

Asian Paints presents Weatherseal uPVC windows and doors

Weatherseal has been transforming living and working spaces since 2015. As part of their commitment to innovation, Asian Paints introduced System Aluminium solutions in 2024. Their collaboration with leading builders and multinationals underscored their commitment to quality. As a trusted partner for industry leaders like Prestige Group, Brigade Group, Mahindra Lifespaces, etc, Weatherseal is your partner in creating weatherproof, secure, and elegant spaces across the country.

All raw materials used are of international quality standards and ensure a durable and aesthetic finish. Moreover, they use cutting-edge European technology and internationally certified materials to ensure durability, aesthetic appeal, and long-term energy efficiency. With exceptional service and solutions that stand the test of time, they focus on transforming homes and commercial spaces. In Southern India, Weatherseal is the new one-stop shop for efficient and high-quality uPVC windows and doors. They are currently present in Bangalore, Hyderabad, Chennai, Kochin, Kannur, Davanagere, Shimoga, Hubli, Warrangal, Nizamabad, Ahmedabad, Koolar and more.

EXIT



ONE STOP SOLUTION



MAKE IN INDIA



ISO CERTIFIED
COMPANY



GREENFIELD
PROJECTS



WOODEN DOOR



MODULAR WARDROBE & VANITY



METAL DOOR



MODULAR KITCHEN

OMFURN INDIA LIMITED

109, Gundecha Industrial Complex, Akurli Rd, Kandivali, Akurli Industry Estate, Kandivali East, Mumbai, Maharashtra 400101

Phone: 022 4210 8900 | Website: www.omfurnindia.com | Mail Id: omfurn@omfurnindia.com



Crafted for the heart of your home with Omfurn India Ltd.
Modern modular kitchens - Where functionality meets finesse.

OMFURN INDIA LIMITED

H.O Add : 109, Gundecha Industrial Complex, Akurli Rd, Kandivali, Akurli Industry Estate, Kandivali East, Mumbai, Maharashtra 400101

Our presence :- Mumbai, Rajkot, Gurugram, Kolkata, Bangalore, Chennai.

Phone: 022 4210 8900 Website: www.omfurnindia.com Mail Id: omfurn@omfurnindia.com



It's official: Spitz by Everyday partners with Royal Challengers Bengaluru for the 2025 Indian Premier League season

One of India's leading Modular Kitchen Accessories Brands, Spitz by Everyday, has partnered with one of IPL's most popular teams, Royal Challengers Bangalore. For the 2025 IPL season, Spitz by Everyday aims to establish a strong and successful collaboration with RCB, bringing innovation and excellence to homes around the world.

Speaking on the occasion, Nirmal Paresh Lunagaria, Director, Sales & Marketing & CFO of Spitz by Everyday says, "We are excited to announce a new partnership with Royal Challengers Bengaluru for the upcoming IPL season 2025." Maruti Interior Products Limited, one of India's largest manufacturers of modular kitchen accessories, is based in Rajkot. A well-known industry veteran with more than 35 years of experience, Paresh Purushottam Lunagaria founded the company in the year 2000. As a Managing Director since 2001, he has been responsible for overall business operations.

At the Bharat Business Awards 2025, Regalo Kitchens wins "Best Modular Kitchen Company in India"

One of India's leading names in the modular kitchen industry, Regalo Kitchens, has been named "Best Modular Kitchen Company in India" at the Bharat Business Awards 2025. At a ceremony held at Hotel Holiday Inn, New Delhi, prominent entrepreneur Ashneer Grover presented the award.

Miss Priya, representing the company, accepted the award in person. Regalo Kitchens' commitment to offering exceptional quality and innovative designs in India's growing modular kitchen market is highlighted by this recognition.



The CEO of Regalo Kitchens, Mr. Surender Kumar, states, "After a decade of dedication and hard work by our team, industry leaders have recognized Regalo Kitchens as the best modular kitchen brand in India. We are consistently investing in cutting-edge technology and modern design to provide world-class solutions to Indian consumers."

With a seamless blend of aesthetics, functionality, and durability, Regalo Kitchens has carved a niche for itself in the highly competitive modular kitchen segment. The company creates space-optimized kitchens tailored to suit Indian households, with a focus on customer-centric design.

The 100-year-old German brand Nolte Küchen expands its footprint in India

In India's fast-evolving luxury home space, one European player is betting big on a growing appetite for premium kitchens: Nolte Küchen. In the next two to three years, Nolte plans to invest \$2 million to expand its presence in India's modular kitchen market. As a result, Nolte is looking to reestablish itself as the industry's leading European kitchen supplier.

"The vision is to re-establish pan India as the No. 1 European kitchen brand. Since establishing partners in India, our brand and reputation in retail and projects have grown from strength to strength," explains Selva Kumar Rajulu, Managing Director of Nolte FZE.

Nolte's story began more than a century ago in Germany. For over 70 years, Nolte Küchen has been crafting modular kitchens, blending German precision engineering with innovative design. "We are still one of the few family-owned businesses in the industry," further adds Rajulu.



Swathy Sivaraman

Storeyboard Design

Project : The Cosy Nest

Location : Bengaluru

Area : 2250 Sqft



The Cosy Nest by Storeyboard Design is a vibrant, multi-generational home that blends Indian heritage with modern functionality. Created by merging two flats, the residence caters to four generations under one roof, each space carefully personalized yet united by a cohesive design language. The layout emphasizes connection and comfort, balancing individual expression with shared experiences.

A deep understanding of the family's lifestyle guided the design, including two kitchens - one warm and lively, the other sleek and ideal for entertaining - and custom spaces for each member. Bold Indian motifs and modern luxury define the interiors, with a palette that shifts from regal hues in the master suite to playful tones in the children's rooms.

Heritage details like CNC-carved doors in the puja room and curated travel



memorabilia weave personal stories into the décor. Thoughtfully planned lighting, large windows, and cosy balconies connect the indoors with the city beyond. Smart spatial planning, multifunctional areas and hidden storage enhance functionality without compromising aesthetics.

Material choices - from rich fabrics and marble to brass and wood - add warmth and elegance. This home is a masterclass in crafting intimate, dynamic spaces that celebrate culture, individuality and unity across generations.

küche7 Founder Interview



Mr. Naeem Chauhan
Founder-Kuche 7

To begin with, could you tell us how Kuche7 is redefining luxury in modern homes?

Luxury isn't just about how something looks—it's about how it works, how it lasts, and how it makes you feel every day. We're redefining luxury by bringing together timeless materials like stainless steel with modern design thinking. Our kitchens are not only visually striking but also built to last for generations. We design with purpose—every edge, every surface, every function is intentional. That's the kind of luxury that lives with you, grows with you.

What is your idea of a perfect kitchen?

A perfect kitchen is one that feels effortless. It's a space that works intuitively for the user—where everything has a place, where movement is fluid, and where durability and hygiene are non-negotiable. It should also reflect your personality and your lifestyle. A kitchen should inspire you to cook, to gather, and to create memories.

Could you elaborate on some aspects of your stainless steel classical kitchen?

Absolutely. Our classical kitchen is all about marrying tradition with innovation. The intention was to have something that looks classic but lasts forever. So, we took our 304-grade stainless steel kitchen and gave it a timeless, elegant treatment with classical shutters. These shutters feature intricate profiles and finishes that echo heritage woodwork—but unlike wood, they're immune to moisture, termites, and age-related wear.

Tell us something about the Kuche7 wardrobes. What is the unique aspect that sets them apart?

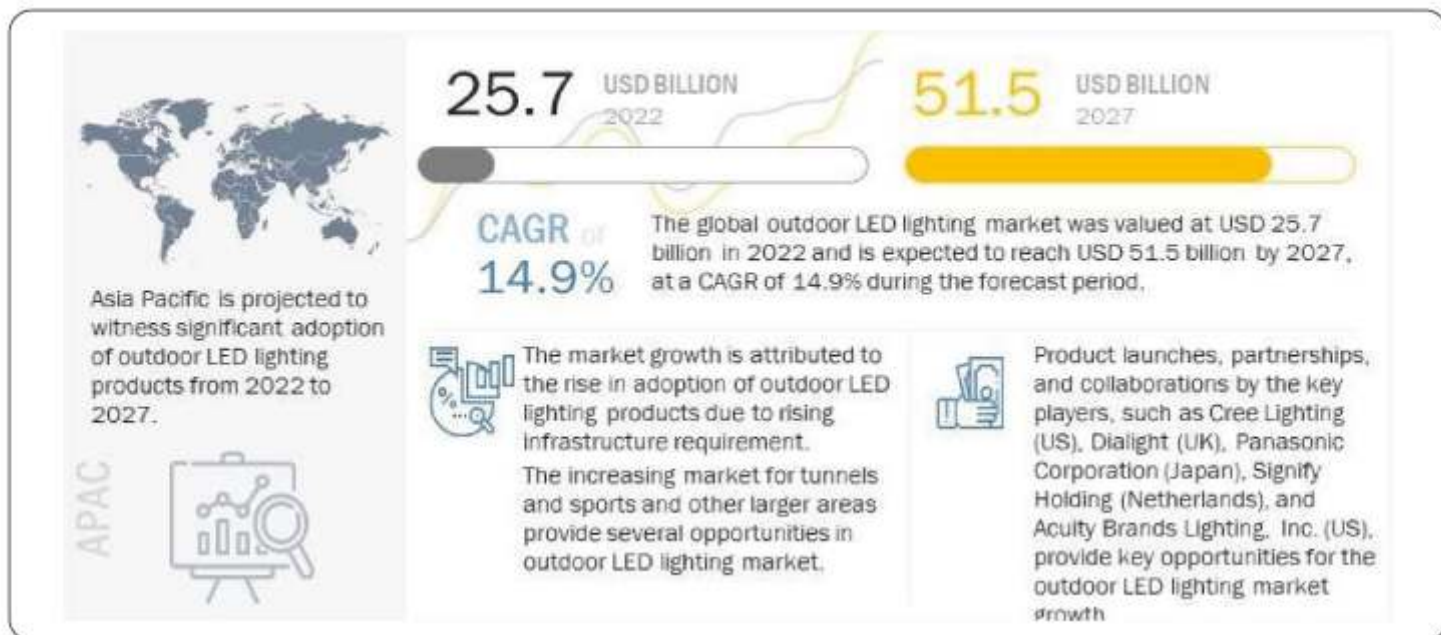
Just like our kitchens, our wardrobes are made with 304-grade stainless steel. That's already a game changer—it means no warping, no sagging, and definitely no pests. But beyond the material, it's the engineering and detailing that make them stand out. Every internal layout is customizable, every surface is thoughtfully finished. And most importantly, they're built to handle everyday use without losing their elegance.



What makes steel the perfect material for kitchens, wardrobes, and vanity units?

Stainless steel is the future of interiors, especially when it's done right. It's strong, hygienic, sustainable, and endlessly adaptable. Unlike wood or MDF, steel doesn't degrade with time or environment. It resists water, heat, stains, and pests. And we offer over 20,000 options in our colors, finishes and textures. It's beauty with backbone.





Size and share analysis of the global outdoor LED lighting market

A CAGR of 13.10% is forecast for the Outdoor LED Lighting market from 2025 to 2033, from US\$ 27.50 billion in 2024. In the outdoor LED lighting market, environmental awareness, the need for energy-efficient lighting options, urbanization, and infrastructure upgrading are all driving growth. Market expansion is driven by factors such as longer lifespans, lower maintenance costs, improved light quality, and smart technologies. Compared to conventional incandescent and fluorescent lighting, LED lighting uses a lot less energy.

The use of energy-efficient technology is being encouraged by governments worldwide, and outdoor LED lighting is a key component. Tax cuts, grants, and rebates are also being offered to businesses, governments, and property owners to encourage them to use LED lighting systems. In addition to government-backed sustainability initiatives and goals to reduce energy use and carbon footprints, LED lighting is also accelerating the transition. These regulatory frameworks drive the market for outdoor LED lighting, which is widely adopted across many industries and regions.

Light of the Night: Goldmedal Nitehawk

In much the same way as our indoor spaces, our outdoor spaces also require LED love. There are many outdoor lighting options available, but bulkhead LED lights are the best of them all. Bulkhead lights are durable and reliable luminaires that are compact, tough and bright. With NiteHawk, Goldmedal introduces its latest line of smart and innovative bulkhead LED lights.

For your outdoor lighting needs, NiteHawk bulkhead LEDs offer energy-efficient, smart and automated solutions. There are three exclusive variants, each of which offers maximum illumination with minimal energy consumption. Nitehawk bulkhead LEDs are designed, developed, and

made in India to meet the rising public lighting needs of smart cities. Having an IP 65 rating makes all three variants dust and water-resistant, making them ideal for street lighting.

This is the first light in this series, a bulkhead outdoor light. Nitehawk bulkhead lights are compact and durable outdoor lighting options. Second variant, Nitehawk bulkhead daylight sensor LED, is equipped with an inbuilt daylight sensor. Lastly, there is the Nitehawk bulkhead motion sensor LED.

Signify Introduces 320th Philips Smart Light Hub in Hyderabad


Signify has announced the launch of the Philips Smart Light Hub (SLH) in Hyderabad. The store, which spans an astonishing 2000 square feet, boasts a diverse range of over 400 SKUs, providing clients with a comprehensive shopping experience.

The store's architecture was meticulously constructed to appeal to homebuyers and investors. This business, located in Nagole, an ever-expanding city with a mix of residential and commercial properties, strives to deliver an unparalleled home lighting experience for homeowners, designers, and investors. Customers can discover the most recent advances in lighting technology through a variety of beautiful, functional and smart lighting options. With the opening of this store, Signify proudly marks the grand opening of its 320th Philips Smart Light Hub in India, marking an important milestone in its journey.

This store is intended to suit the customers' home lighting needs, which range from decorative lights like chandeliers, wall lights, and track lights to utilitarian lights like modular COB, downlighters, panels, and spotlights.

RANGE-LITE LLP

Email : sales@rangelite.in

  [rangeliteindia](https://www.rangelite.in)

www.rangelite.in

 **RANGE-LITE**[®]
Original


One Above[®]
Professional Lighting Series



Rakesh Yadav - Director
Range-Lite LLP

At RANGE-LITE, we redefine the future of lighting with an unwavering commitment to innovation, sophistication, and excellence. Our meticulously crafted lighting solutions are designed to elevate architectural spaces, offering a seamless fusion of cutting-edge technology and timeless luxury. With a focus on precision engineering, each piece is a testament to our dedication to craftsmanship, creating stunning visual experiences that complement the most refined designs. Trusted by leading architects and top-tier lighting professionals, RANGE LITE delivers exceptional performance, durability, and aesthetic brilliance,

making it the ideal choice for high-end projects where every detail matters. Elevate your design vision with our bespoke lighting solutions, and let us illuminate the possibilities for your next masterpiece. Experience RANGE LITE-where sophistication meets functionality in every beam of light.

Powering Your Vision, **Brightening Your Future**





**Sharmila Kumbhat - Director
K-lite Industries Pvt. Ltd.**



K-LITE INDUSTRIES PVT. LTD.



K-LITE: Illuminating Architecture Since 1977

Established in 1977, K-LITE is a pioneer in the design and manufacture of high-quality architectural luminaires and lighting poles. With decades of expertise, the brand has earned a reputation for delivering reliable, aesthetically refined lighting solutions that cater to a wide range of design preferences and functional needs.

Sustainable Manufacturing, Timeless Design

Operating through state-of-the-art manufacturing units, K-LITE focuses on sustainable, energy-efficient LED technology. Every luminaire is engineered to meet stringent international quality standards while exuding architectural elegance.

Built to Withstand the Elements

K-LITE's landscape and outdoor lighting solutions are designed for rugged environmental conditions capable of withstanding:

- Wind, Water, Direct Sunlight, Rain, Dust

All products feature high IP and IK ratings, ensuring protection from ingress and impact, making them ideal for

demanding outdoor applications.

Comprehensive Product Range

K-LITE offers one of the most versatile lighting portfolios in the industry, including:

- Linear Wall Washers, Up-Down Lighters, LED Strips / Neon Flex, Promenade Lighting Bollards & Pathway Lights, Underwater Luminaires, Post-Top Luminaires, Bulk heads & Pathfinders, IP67 Linear Profiles, Polar Lighting Poles, NEW: Facade Lighting Series

Lighting with Purpose & Beauty

Every K-LITE product is a blend of functionality and design excellence. Whether it's illuminating walkways, enhancing architectural façades, or setting the mood in public spaces, K-LITE luminaires consistently deliver:

- **Superior illumination**
- **Long-lasting durability**
- **Aesthetic enhancement**

Trusted by architects, landscape designers, and urban developers, K-LITE continues to transform spaces with lighting that seamlessly integrates form and function.



Stretch Ceiling: The Modern Day Innovation Towards Elegant Ceiling



Backed by 15+ years of industry experience, Zenceil Stretch Ceilings — a flagship brand of Aditya Interiors — has redefined ceiling aesthetics with a perfect blend of engineering and elegance. Born in 2011, the Mumbai-based brand has since carved a niche as a pioneer in delivering lightweight, highly durable, and 100% recyclable stretch ceiling solutions across residential, commercial, and hospitality spaces.

From corporate giants to luxury hotels and curated homes, Zenceil's reach spans across 7,000+ completed projects, including airports, malls, and restaurants. Their clientele includes renowned names like Coca-Cola, Godrej, Flipkart, Marico, Oracle, Asian paints, TCS — a testament to their quality and trust.



What sets them apart? A rare combination of technical expertise and design sensibility — offering everything from translucent and lacquered finishes to bespoke printed and 3D-formed ceilings.

Every Zenceil installation is fast, dust-free, and tailored to the unique needs of the space — thanks to their in-house design assistance and a perimeter aluminium track mounting system that ensures precision and speed.

At its core, Zenceil believes in delivering value through craftsmanship, sustainability, and constant innovation. With a clear vision to elevate India's interior landscape while being globally competitive, the brand continues to earn the trust of architects, designers, and developers alike.

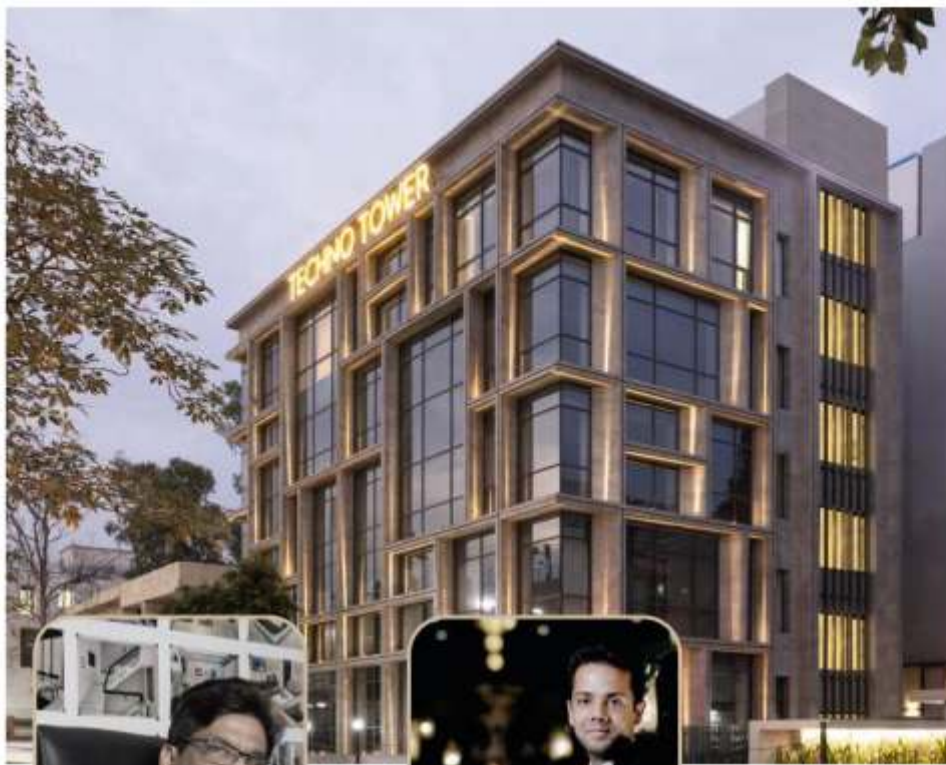
To explore how Zenceil can elevate
your next space, head to:

+91 98198 46701 | +91 86555 59011 | +91 98929 70087

support@zenceil.com

www.zenceil.com


zenceil stretchceiling



Ar. SK Goel



Ar. Nitish Goel



CONARCH
ARCHITECTS

Project : Techno Tower

Location : Noida **Built Area :** 1560 Sq.mtr

Project Team : Pushplata Dinkar, Mukul Bhardwaj

Photography : TakenIn Studios



CHAIRNX

WOW COMFORT EXPERIENCE



Customizable Furnitures That
Speaks For Your Brand

EXCELLENT
Chairs



Scan for Catalogue



chairnx.com



chairnx@gmail.com



86557 36360

CHAIRNX

WOW COMFORT EXPERIENCE



Customizable Furnitures That
Speaks For Your Brand



Scan for Catalogue

EXCELLENT
Chairs



chairnx.com



chairnx@gmail.com



86557 36360



Mahesh Patel & Parth Patel

"Inception collection by Haruma"



Haruma, a premier luxury furniture brand from Ahmedabad has carved a niche in the Indian design domain through its Inception Collection inspired from unusual elements. Drawing inspiration from brutalism, this collection merges raw textures with bold contrasts and architectural precision, transforming furniture into a captivating art form. "The idea was to create futuristic, functional pieces while retaining cultural and ethnic elements and colours. Each piece exemplifies minimalist design, where structure meets simplicity, creating a powerful spatial presence," explains Parth Patel, Founder, Haruma.

furniture design by exploring the interplay of shadows and form. Certain pieces take direct inspiration from the Dune universe. Ramesh Lohar says, "Inspired by the ornithopter from the Frank Herbert novel Dune, the Dark Horse Light captures the essence of flight and movement, with flexible ball joints that emphasize mechanical sophistication. Its brutalist material palette, solid wood, carved marble, and brass lends it a sense of timeless strength and artistry."

The materials, from the striking allure of red Levante marble to the warmth of Ashwood and travertine, are carefully selected to ensure enduring beauty & durability. Each piece is a testament to Haruma's commitment to quality, combining traditional craftsmanship and modern aesthetics.

Designed by Ramesh Lohar and Bindi Shah of R+R Architects, the collection pushes the boundaries of modern



Mint Superfresh - Designing the Future of Everyday Retail



Aatika Manzar

Aatika Manzar Designs

Project : Mint Superfresh

Location : Meerut

Built-up Area : 5400 sqft

Photo Credit : Vaibhav Bhatia



In today's evolving retail world, supermarkets are more than places to buy groceries—they're experiences shaped by design. When we were approached to create Mint Superfresh in Meerut, our aim wasn't just to organize shelves but to reimagine how customers move, interact and feel within the space.

Spanning 5400 square feet, the layout was planned to encourage natural flow and intuitive discovery. We began by studying shopper behavior—where people pause, what they notice first

and how they navigate. This insight helped us shape a layout that subtly guides customers while enhancing both comfort and commercial value.

The ground floor features high-footfall sections like dairy, frozen foods, beverages, snacks, and bakery items, ensuring an engaging entry experience. Gift packaging and dry fruits, placed near billing, encourage festive purchases. The staircase and lift are thoughtfully positioned at the rear, prompting full exploration before transitioning to the basement.

Shelving, chillers and displays were custom-designed for better visibility and accessibility. Soft lighting and wide aisles make the space feel open and easy to navigate.

With over 60 departmental stores designed across India, our intent is always the same: to bring thoughtful, human-centric design to everyday spaces. Mint Superfresh reflects that belief—quiet, functional, and designed to make daily shopping a better experience.





Modern Eco-Friendly Cable Line Unveiled by CADIVI

Vietnam Electric Cable Corporation (CADIVI), a dominant brand in the country's electrical wire and cable sector, has unveiled a new line of eco-friendly electrical cables. These innovative solutions, which use lead-free (LF) insulation and low-smoke halogen-free (LSHF) materials, demonstrate CADIVI's dedication to sustainability and safety.

CADIVI strives to reduce environmental pollution while improving user safety through the use of innovative technologies and thorough study. The newly introduced LF and LSHF cables are intended to reduce harmful smoke emissions in the case of a fire, adding an extra layer of safety for persons and communities.

For years, CADIVI has prioritized research and innovation, consistently incorporating cutting-edge technology into its product line. This dedication not only increases its competitiveness, but it also corresponds with Vietnam's overall shift to a green economy. CADIVI actively encourages the use of non-toxic materials and contemporary manufacturing techniques to reduce environmental effects.

V-Marc India Limited Launches Innovative Wire & Cable Products

V-Marc India Limited, India's biggest wire and cable maker, has announced growth ambitions in Kerala. Kerala, known for its embracing of technology and innovation, is an important market for V-Marc to launch its latest line of innovative wire and cable products. The launch conference in Kochi also featured the introduction of new goods Flexi-TUF eB-HFFR Wires and eB+ Power Cables, which were developed after considerable study and are powered by electron beam (eBeam) technology.

The Flexi-TUF eB-HFFR Wires and eB+ Power Cables use a



unique insulating material created by V-Marc that replaces toxic PVC with an XLPO-based polymer. These unique solutions provide an 80% increase in current carrying capacity, a service life of more than 60 years, the ability to tolerate operating temperatures of up to 150°C, and powerful short circuit protection. This environmentally friendly insulation eliminates chlorine emissions during fires, significantly lowering the risk of suffocating. The innovative technology used in these goods is already well-known in Europe, the United States, and Southeast Asia.

Game-Changing Wire, FinoUltra with Advanced Electron Beam Technology Launched by Finolex Cables

Finolex Cables, a well-known name in electrical and communication cables, has introduced FinoUltra, a new line of wires designed for maximum safety, durability and performance. This unique solution uses Electron Beam technology to meet the demands of current infrastructure in residential, commercial & industrial settings.

FinoUltra wires use E-Beam technology to increase mechanical and thermal qualities, allowing them to tolerate higher voltages while keeping a low radial thickness. These wires have a lifespan of more than 50 years and provide 75% more current capacity than traditional wires, decreasing energy loss, eliminating overheating, and ensuring peak performance. They can function in temperatures as high as 125°C, making them perfect for tough outdoor and harsh situations.

FinoUltra wires are engineered to withstand temperature variations, UV exposure, and chemical effects, ensuring dependable performance under harsh environments. During fires, the wires release little smoke, reducing dangers dramatically when compared to ordinary PVC wires.



For High-Traffic Areas, Simpolo Tiles & Bathware Unveils Alchimia & Venitto Collection

Simpolo Tiles & Bathware has created two game-changing collections, Alchimia and Venitto, in an effort to reinvent flooring solutions in high-traffic areas. These tiles are designed specifically for malls, airports, metro stations, public spaces, and commercial centers, ensuring exceptional durability, visual excellence and cutting-edge resistant qualities.

These sets, including POSH+ surface technology, appeal to architects, interior designers, and project managers seeking low-maintenance, high-performance surfaces. Whether for bathroom tiles, corridors, or large public spaces, Alchimia and Venitto combine functionality with cutting-edge design.

When it comes to high-traffic flooring options, both durability and aesthetics must be considered. Simpolo Tiles & Bathware's Alchimia and Venitto collections are designed to withstand high pressure, continuous movement, and exposure to a variety of environments.

The Alchimia and Venitto collections are more than just durable; they also provide aesthetic value, design freedom, and innovative technology.

Asian Granito Introduces Groundbreaking, Alvaro Collection

Asian Granito India Limited (AGL), one of the country's largest Luxury Surfaces and Bathware Solutions businesses, has proudly launched the Alvaro Collection, a groundbreaking collection that redefines elegance, durability, and modern living.

The Alvaro Collection is designed for consumers who value both style and durability, with zero reflective, scratch-resistant tiles driven by cutting-edge GRITECH Technology

and SICURA Surfaces. This premium collection contains 20 smart tile series with 76 gorgeous designs, all available in a large 600x1200mm format with an 8.5mm thickness for added strength. Alvaro's textures, including Verline, Carven, Wavy, and Roof Texture, harmoniously merge beauty and practicality, making it suitable for both interiors and exteriors.

AGL continues to push the limits of tile innovation. In 2023, the business launched AGL AURA 360 Tile Visualizer, which transformed the tile choosing experience.

Somany Ceramics Launches its Much-Anticipated Duragres GVT Tile Designs and Finishes

Somany Ceramics, a global tile industry leader, showcased its highly anticipated Duragres Collection 2025 at a lavish launch event at the Leela Ambience Convention in Delhi. The event included an exquisite assortment of revolutionary collections, including Everstone, Eternastone, and Harmony in 800X1600mm Glazed Vitrified bodies, as well as a handpicked selection of Duragres GVT in numerous finishes in 600x1200 size, to push the frontiers of style, durability, and utility.

The Everstone Collection brings stone's raw, natural beauty to life, with a remarkable combination of rugged aesthetics and excellent durability. Featuring a delicately textured matte surface with a refined sheen, the Powered by Robusto surface provides exceptional durability and endurance while resisting scratches, stains, and moisture, making it an ideal choice for both indoor and outdoor use.

The Eternastone Collection, inspired by nature's ageless artistry, faithfully recreates the rich textures and shapes of ancient rock utilizing Etchtech surface technology. The Harmony Collection redefines luxury with gorgeous designs, sophisticated finishes, and expert craftsmanship.



Birla Opus Paints Inaugurates Birla Opus Paint Studio in Hyderabad

Birla Opus Paints, a division of Grasim Industries within the Aditya Birla Group, has inaugurated its Birla Opus Paint Studio in Hyderabad. This is the brand's sixth experience store, after successful openings in Gurugram, Lucknow, Mumbai, Navi Mumbai, and Bengaluru.

The Hyderabad studio is aimed to deliver an immersive and personalized painting experience by combining cutting-edge technology and expert recommendations. Customers can browse over 170 products, including wallcoverings, designer finishes, and specialty coatings. The store also provides specialized services including color advice and creative application techniques.

The Paint Studio caters to local tastes and heritage, delivering exclusive colors and selected décor packages that capture the city's vivid essence. Birla Opus Paints intends to extend its retail base across India, opening new experience centers in major locations.

"Garmi Gone, Thandak On" Campaign Launched by Berger Paints

Berger Paints India Ltd., a paint company, has launched its latest Home Cooling Paints Range, WeatherCoat Anti Dust Kool, HomeShield Roof Kool & Seal, and HomeShield Tank Kool, under the refreshing and relatable campaign theme, "Garmi Gone, Thandak On."

Recognizing the dramatic rise in temperature and energy usage, Berger Paints has created this science-backed, passive cooling paint line as a cost-effective, environmentally friendly alternative to traditional cooling solutions such as air conditioners. The novel methods are intended to reduce indoor temperatures by up to 10°C, greatly reducing electricity use and boosting energy

efficiency in heatwave-prone areas.

The campaign's introduction coincides with Indian cities' efforts to combat the urban heat island effect. This phenomenon causes concrete-heavy metropolitan areas to retain and radiate heat, increasing discomfort and energy consumption. Berger Paints' cooling solutions provide a low-tech yet effective technique of minimizing heat intrusion through rooftops, walls and water tanks, assisting households in dealing with intense heat, particularly those with lower incomes.

Chromacsm - The World's Largest Architectural Colour System Launched by Asian Paints

Asian Paints, a global leader in paint and colour technology, is pleased to announce the debut of Asian Paints Chromacsm, the world's largest architectural colour system. With over 5,300 distinct colors, it is poised to transform the way architects, designers, and industry professionals interact with colour.

To commemorate the launch of Chromacsm, Asian Paints has teamed with famous architect and artist Suchi Reddy, founder of the New York-based Reddymade studio, which is known for its inventive and human-centric approach to design. Reddy collaborated with Asian Paints to design and develop an art installation that captures her version of Chromacsm, an artistic investigation of the boundless cosmos of color.

This remarkable piece consists of a succession of rods that shift from black to vibrant color, depicting the entire spectrum of color. This installation, inspired by a dimensional color study, converts colour into a physical 3D experience, allowing viewers to delve deeply into the possibilities of Chromacsm.



Dr Niranjana Hiranandani,
Founder & Chairman
HIRANANDANI GROUP

Hiranandani Group is considering the launch of an office real estate investment trust (REIT). The proposed REIT, which can be described as a company that own or finance income-producing real estate across a range of property sectors, is estimated to have a portfolio of around 7 million square feet (sq ft) of commercial realty at the group's integrated developments in Powai and Thane in the sprawling Mumbai Metropolitan Region (MMR). Investors are shown keen interest in Yotta, the group's pure-play data centre arm.

The revenue generated from Yotta is expected to equal or exceed that of the group's residential property business in the next few years.

It also plans to invest Rs 32 billion to redevelop five housing societies in Mumbai. Though Hiranandani Group aims to run the company as a family-owned business, it has shown interest in infusion of external capital in recent times.

The firm has partnered with private equity major Blackstone to set up Greenbase Industrial and Logistics Parks, which is operational across four major markets in the country.

The firm is bullish about growth in its core residential business in Mumbai's peripheral regions, particularly in areas adjacent to the upcoming Navi Mumbai International Airport.

It is developing the 550 acre-Hiranandani Fortune City, which is located around 20 kilometres (km) away from the under-construction airport. A part of the Fortune City, including residential areas and a data centre, is already operational.

The company believes there will be an increasing focus on slum redevelopment in Mumbai.

Website : www.hiranandani.com



IT'S THOUGHTFUL. IT'S
Rustomjee

Boman Irani (CMD)
RUSTOMJEE

Rustomjee plans to build data centers in Mumbai, the nation's largest real estate market, to ride the artificial intelligence boom while it continues to sell luxury homes. The data centers will be developed across 5 million square feet of land in Thane, a suburb of Mumbai, where the company holds an economic interest.

Rustomjee, the brand of publicly listed Keystone, plans to get a strategic or financial partner for the project. It currently has a residential township in Thane through a partnership that is 49 per cent-owned by Singapore's Keppel Land, a unit of Keppel.

In August, the listed developer launched a luxury residential project in Thane near Mumbai in partnership with Keppel. The project named Verdant Vistas is expected to have 440 units and is anticipated to generate a gross development value (GDV) of Rs 1,750 crore. This is its first luxury project in Thane.

The company said it is expecting a response similar to its other premium projects in areas like Bandra, Prabhadevi and Juhu. The project will include two buildings wherein the first tower will have 176 flats and second building will have 264 flats.

The company expects the majority of its launches in the residential segment for FY25 to be in the mid-mass segment, where homes are priced between Rs 1 crore to Rs 3 crore.

During the ongoing quarter, the company plans to launch three projects, one more than it had guided. These include group housing projects in Thane, as well as a plotted development in Kasara, with a revenue potential of around Rs 300 crore.

The Kasara plotted development has a land parcel of around 88 acres in the first phase, with 60 more acres in later phases. **Website: rustomjee.com**



**MITSUBISHI
ELECTRIC**
Changes for the Better



New Machine-Room-Less Elevator, Schindler 5000 Launched by Schindler Elevator Corporation

Schindler Elevator Corporation, a prominent manufacturer of elevators, escalators, and moving walks, has introduced the Schindler 5000, a machine-room-less (MRL) elevator designed for low- to mid-rise workplaces, hotels, hospitals, apartment complexes, and other applications.

The Schindler 5000, which is available in most US markets, expands on Schindler's MRL offering with taller cars, larger entrances, load capacities of up to 5,000 lb., and travel speeds of up to 350 feet per minute (fpm), all while taking up less building space.

The Schindler 5000 is North America's leading energy-efficient machine room-less elevator, as proven by annual energy consumption data provided in Environmental Product Declarations (EPD). It has Schindler's revolutionary regenerative drive technology, which decreases energy usage by up to 30%, as well as LED lighting and an automatic sleep mode to save electricity while the elevator is not in use.

For Elevators Manufactured by Other Companies Overseas, Mitsubishi Electric Building Solutions Unveils New Control Renewal Menu

Mitsubishi Electric Building Solutions Corporation has announced the debut of a new overseas control renewal menu for other companies' elevators placed in existing buildings on March 19. MEBS will meet the different needs of its international customers for elevator control system renewal by developing a new control panel with an auto-tuning feature, while also expanding its maintenance and renewal business.

Many elevator components manufacturers and specialized elevator maintenance firms operate in the international elevator market, catering to a wide range of consumer

needs. With so many options available, MEBS receives numerous requests from clients with existing elevators manufactured by other businesses to provide them with higher-quality services by replacing their control systems with our control panels.

MEBS, which oversees Mitsubishi Electric's building systems business, is prioritizing the expansion and acceleration of the global elevator maintenance and renewal business. Through this menu, we hope to replace 1,000 elevators per year by 2030, mostly in North America and Europe.

India's First Fully Customizable Home Elevator Launched by Elite Elevators

Elite Elevators, a premium home lift industry leader, has unveiled Elite Elevators Bespoke, India's first entirely customisable luxury home elevator. The inaugural event, hosted at the company's Chennai headquarters, demonstrated how the new offering revolutionizes residential mobility by combining cutting-edge technology with bespoke design.

With an objective to transform home mobility with world-class advancements, Elite Elevators have offered Bespoke elevators that are meticulously designed to integrate seamlessly into their daily lives, enhancing accessibility, safety, and compliance while embodying the perfect blend of aesthetics and technology, thus providing customers with a luxurious experience.

Bespoke, designed in partnership with European specialists, uses CE-certified technology and has a gearless, noiseless, and pitless design, making it suited for both modern and heritage homes. The energy-efficient technology promotes sustainability without sacrificing luxury.

The new range is now available throughout India, with exclusive experience centers demonstrating its possibilities.

Trends Shaping Future of Elevator Industry



Mr. Manish Mehan
CEO & MD, TK Elevator India



Elevators have come a long way since their inception. Initially, they were operated manually or by steam power and primarily used in the industrial sector. The evolution of a simple pulley system to sophisticated electronic control has revolutionized the way we move between the floors. This transformation has not only made our lives more convenient but also significantly influenced the shape of modern cities.

Several significant developments are expected to shape the development of the Indian elevator market in the future.

Smart Elevator - The Indian elevator market is currently in the midst of a significant transformation, largely due to the integration of artificial intelligence and Internet of Things (IoT) capabilities. Besides changing the market, these advanced technologies significantly improve the user experience. The companies are making substantial investments in touchless operations, real-time monitoring & predictive maintenance, instilling confidence in the market's dominance in the future.

Sustainable Elevator - As environmental concerns continue to rise, the elevator industry is shifting towards sustainable solutions, driven by the innovative efforts of companies. Elevators can account for up to 10% of the total energy consumption in a high-rise building. In a report, the International Energy Agency (IEA) highlights that nearly 30% of global energy consumption comes from buildings, with elevators and other vertical transportation systems contributing a notable portion. As tier-I and tier-II cities expand vertically, elevators become central to urban infrastructure, and their energy efficiency is becoming more urgent. By fitting two independent cabins into a single shaft, TWIN elevator solutions effectively double the capacity while making better use of available space. As a result of TWIN's unique design, the elevator reduces energy consumption, making it a more sustainable choice for modern buildings.

Customised and Aesthetic Designs - Customisation and aesthetics will change elevator design in the future. A modern elevator should reflect its surroundings' aesthetics with manufacturers responding by offering a wide range of design options, from luxurious finishes to space-saving designs, opening exciting creative possibilities for future elevator design.

The power of AI in Predictive Maintenance - AI is a vital tool for predictive maintenance, utilizing data collected from sensors installed in elevators. Artificial intelligence algorithms can detect potential equipment failures before they occur by analyzing minor deviations from normal functioning. Taking a proactive approach to elevator maintenance results in longer-lasting, more reliable and more secure components.

The Role of Government

Government regulations are becoming critical as AI and IoT become a part of elevator systems. These rules must ensure the data by implementing clear guidelines that protect user data obtained by technologies.

Secondly, India's National Building Code (NBC) should be reviewed and updated to include new technologies and ensure inclusive design principles are applied to all elevator installations.

Conclusion

As urbanization speeds up & technological advancements advance, the demand for smart, efficient, and aesthetically pleasing elevators will only increase in India. The Indian elevator market, currently valued at approximately USD 1.1 billion, is expected to grow at a compound annual growth rate (CAGR) of around 7.5% over the next five years. With the Indian elevator sector gearing up for these changes, stakeholders must remain agile, embracing new technologies and practices to meet the expectations of a rapidly changing landscape.



GERMAN ENGINEERING THAT KEEPS INDIA MOVING

Whether building a new state-of-the-art system or optimizing and modernizing existing ones, our solutions deliver crucial energy and time efficiencies

Toll free number: 1800 102 8500
in.info@tkelevator.com
www.tkelevator.com/in-en/

Reach us now!
Scan the QR Code



Form Meets Function: Ar. Bhuvan Kapila's Take on Facade Design in Modular Architecture

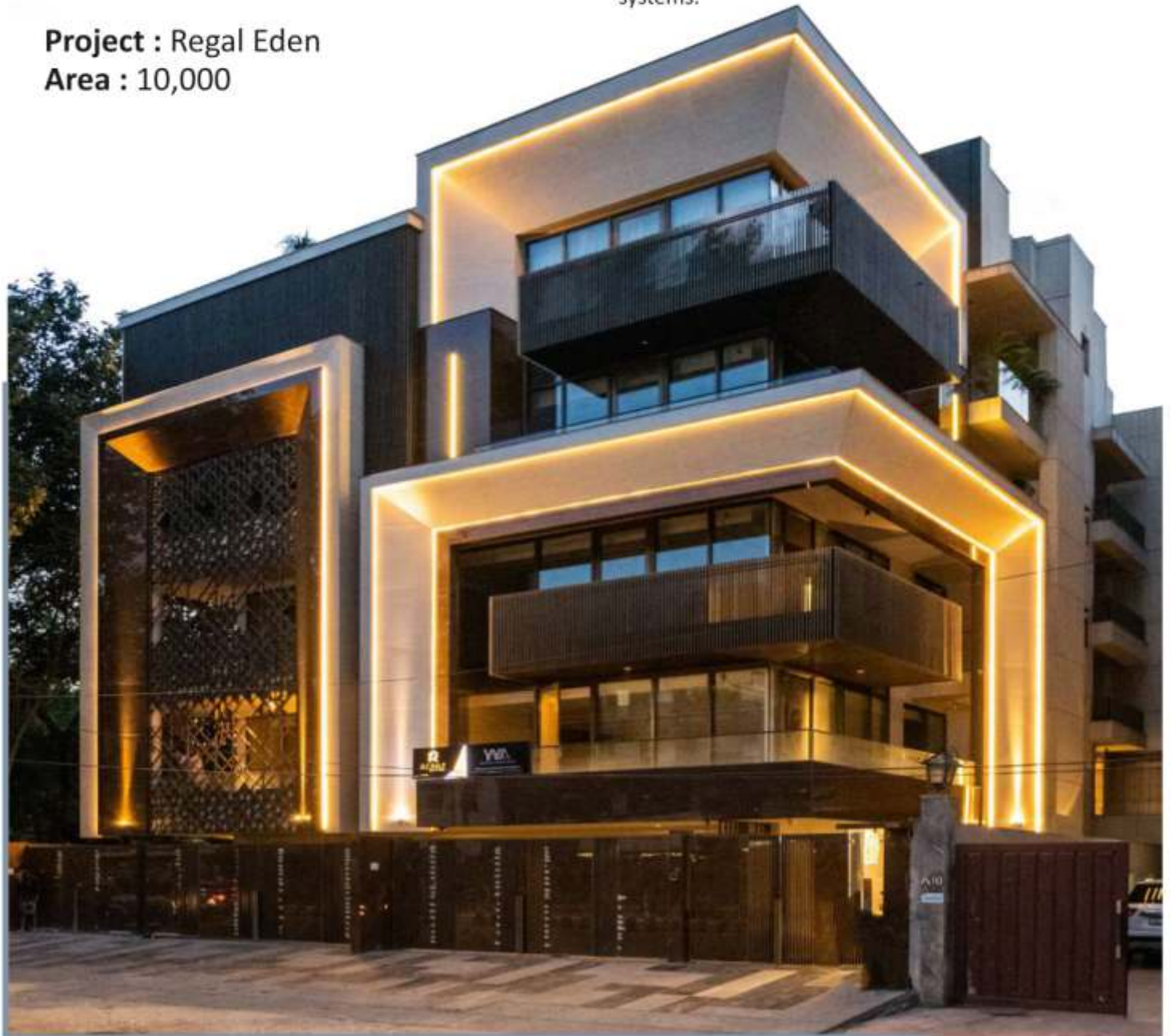


Ar. Bhuvan Kapila & Ar. Gagandeep Kapila Workshop for Metropolitan Architecture

Project : Regal Eden
Area : 10,000

Modular architecture is often associated with industrial practicality and is undergoing a renaissance. With urbanisation surging and sustainability a global priority, modular systems provide viable solutions for faster construction. However, these very benefits have often led to the misconception that modular buildings lack character or artistry. Defying this, Kapila takes a new leap with his designs, adding industrial elements to facades. Be it exposed concrete or metal elements, every aspect caters to functionality without compromising on the form. The project *Regal Eden* includes mild angles, tapered surfaces and layering of metal pieces, creating a striking yet understated look.

In modular architecture, the facade plays an especially crucial role in lending individuality to inherently repetitive systems.



Kapila's design sensibility leans on the philosophy that the facade must be an extension of the building's logic. This responsiveness can take various forms—thermal, acoustic, or visual. For example, in the design of *Regal Eden*, the facade of this distinctive structure involved breaking away from traditional modern or classical styles, avoiding uniform geometry and excessive decoration. These elements elevate aesthetics and control daylight, improve energy performance, and create sensory richness.

Kapila's approach is deeply human-centric. For him, the design is about what people feel up close. This sensitivity to scale, texture, proportion, and interaction informs every detail of his design. His designs often introduce interstitial spaces that break the flatness of the facade and invite human engagement. These projections provide shade, outdoor seating, or pockets of green, making the facade an active interface rather than a passive boundary. Moreover, his designs also include voids or niches that add character to the form.



In essence, Kapila's approach to modular design revolves around form and function as collaborative elements. Through his thoughtful, contextually rich facade designs, he reminds us that even in the world of prefabrication, the soul of architecture lies in its ability to connect with people and with possibility.





4 5 6
Nov 2025

Jio World Convention
Centre (JWCC), Mumbai

ORGATEC India 2025: **Shaping the Future of Workspaces in India**

The highly anticipated launch of ORGATEC India marks a new chapter in India's workspace and building innovation journey. Scheduled from November 4-6, 2025 at the Jio World Convention Centre, Mumbai, this premier B2B exhibition brings the globally acclaimed ORGATEC brand to India, spotlighting cutting-edge solutions in workplace design, smart facility technology, office furniture, automation, and co-working infrastructure.

As India's only comprehensive platform dedicated to modern work environments, ORGATEC India caters to a broad spectrum of sectors—from AI-driven facility automation, energy management, and intelligent access systems to ergonomic furniture, digital workplace tools, and sustainable materials. Visitors will include architects, designers, real estate developers, facility managers, corporate leaders, OEMs, and tech innovators seeking efficiency, flexibility, and intelligent transformation in commercial spaces.

With over 1,900 Global Capability Centers and a booming demand for modern, adaptable offices, the Indian market is poised for a workspace revolution. ORGATEC India unites global vision with local opportunity—offering exhibitors and visitors a 360-degree view of tomorrow's smart, sustainable workplaces. Don't miss the chance to experience, engage, and lead at India's most future-forward exhibition redefining the way we work.

www.orgatec-india.com



“

**ORGATEC India
is not just an
exhibition—it's a
catalyst for
smart,
sustainable, and
future-ready
workspaces.**

”



Milind Dixit

Managing Director
India & SAARC
Koelnmesse Pvt. Ltd.





4-6 November, 2025
Jio World Convention
Centre (JWCC), Mumbai



EMPOWERING THE FUTURE

*Where Global Leaders Shape
the Future of Workplace and
Facilities Ecosystems*

**BOOK YOUR
SPACE NOW!**



www.orgatec-india.com



- Smart Building Technology
- Office Furniture & Equipment
- Workplace Automation & Tech
- Facility Services/Supplies
- Co-working/Flexible Workplaces

For Sales & Sponsorship: Manoj Nandiot
M: +91 98339 31376

E: m.nandiot@koelnmesse-india.com

For Marketing & Alliances: Manali Babaria
M: +91 76662 72824

E: m.babaria@koelnmesse-india.com

Associate Partners



CRISP
ENGAGE • EXPLORE • EXPAND



INBAC
Building Connectivity



The Faces Behind India's Only Truly International B2B Design Show

Design ²⁰²⁵
Mumbai

India's international
contemporary design show

Design Mumbai is the new international trade event for design, architecture and interiors professionals capturing the creative energy and consumer power of India, the world's 5th biggest economy, featuring leading international and Indian contemporary brands and designers. The second edition of Design Mumbai show will take place from 26 - 29 November 2025 at Jio World Garden, Mumbai.

Montgomery Group is the UK's longest-running independent events organiser with over 50 events and co-locates in 15 countries including Art Central in Hong Kong, Art SG in Singapore, Photo New York, and the highly regarded India Art Fair, Delhi, which has been staged successfully for 15 years.

The **Design Mumbai team** is headed up by a trio of show production and design specialists with over 60 years of combined experience:



Ian Rudge is an event organiser and consultant with over 25 years of experience in the design industry. A respected figure in the global design community, he co-founded the UK's leading design fair, 100% Design, in 1995. He later served as Business Development Director at Clarion Events, launching key trade shows and went on to lead the development of Design Shanghai, Sustainable Design China Beijing (2022) and Design Shenzhen (2023).

Piyush Suri is a designer and event curator. He is the founder of Handmade in Britain, a platform that supports designer-making talent across the British Isles and mentors new creative businesses. With over 20 years of experience in the craft and design sector across the UK, Europe and India, he has successfully organised more than 28 contemporary craft and design fairs. He has appeared on TV as a judge (BBC2, Channel 4) and as a mentor in BBC1's Make it at Market (2022-2024).



Michael Dynan has over 20 years of experience in launching and acquiring over 30 successful event titles. He was one of the founding directors of Media 10 and co-founded Design Shanghai, one of the world's most prestigious international design events.

Design Mumbai offers a rich, immersive experience that will bring together leading international and Indian design brands, featuring world-class installations rising talent spotlights and thought-provoking talks programme.



Design Mumbai

26–29 November 2025
Jio World Garden
Mumbai

designmumbai.com

India's Global Design
Exhibition for Architects
and Interiors Professionals

Residential | Workplace | Hospitality



Infiniti, Italy



Leading the Way in Building Industry Innovation

Over the past 18 years, ACETECH has emerged as a beacon of architectural innovation, uniting visionaries and thought leaders from around the globe. This milestone anniversary marks not just a celebration of our journey but a profound reflection on the collective strength and commitment of a community dedicated to excellence and sustainability. Nearly two decades of extraordinary achievements remind us of the resilience, ingenuity, and forward-thinking spirit that drive the architectural world forward.

At ACETECH, our mission goes beyond showcasing cutting-edge advancements. We aspire to cultivate an environment where bold ideas thrive and trailblazing minds converge. Each year, we push the boundaries of possibility, championing transformative solutions to address the pressing environmental challenges of our time. This platform has become a nexus for architects, designers, and industry leaders who are shaping the future of our built environment—one that is rooted in sustainability and propelled by innovation.

As we look to the future, our commitment remains steadfast: to inspire, empower, and support those who dare to make a lasting impact. We are thrilled to welcome the brightest minds and the most ambitious projects, ready to redefine the landscape of possibility. Together, we lay the groundwork for a future that is both visionary and responsible—a legacy we proudly share with our entire community.

— Sumit Gandhi, Founder of ACETECH

ACETECH 2024-25

BENGALURU
10-11-12 OCT. 2025
BANGALORE INTERNATIONAL
EXHIBITION CENTRE (BIEC)

MUMBAI
6-7-8-9 NOV. 2025
BOMBAY EXHIBITION CENTRE
(BEC)

DELHI
4-5-6-7 DEC. 2025
BHARAT MANDAPAM (PRAGATI MAIDAN)

HYDERABAD
23-24-25 JAN. 2026
HITEX EXHIBITION CENTER



Sumit Gandhi

Chairman & MD
ABEC Exhibitions &
Conference Pvt. Ltd.





DANSHI ENTERPRISE

YOUR DESIGN, OUR EXECUTION



At Danshi Enterprise, we create modern and stylish glass partition systems that make spaces bright, open, and functional while maintaining privacy and sound proof. We Have Wide Range of Alluminium Profiles and Professional Inhouse Installation Team and Larger Stock of Profile Compare to Other Competitors. Our USP is Quality of Service and Quality of Material.



DANSHI ENTERPRISE

DEMOUNTABLE GLASS PARTITIONS



SCAN ME



PRAJESH DARJI
FOUNDER & CEO



HARSHITA KUMBHANI
DIRECTOR

📍 305, 3rd floor, Orbit Premises, Off. New Link Rd, Opp. Lemon Tree Hotel, Mindspace, Malad West, Mumbai 400064



+91 91777 54555



info@danshienterprise.com



www.danshienterprise.com

From Heritage to Highrise: A Reflection by Ar. Nirmala Banaji



Ar. Nirmala Banaji

Banaji & Associates

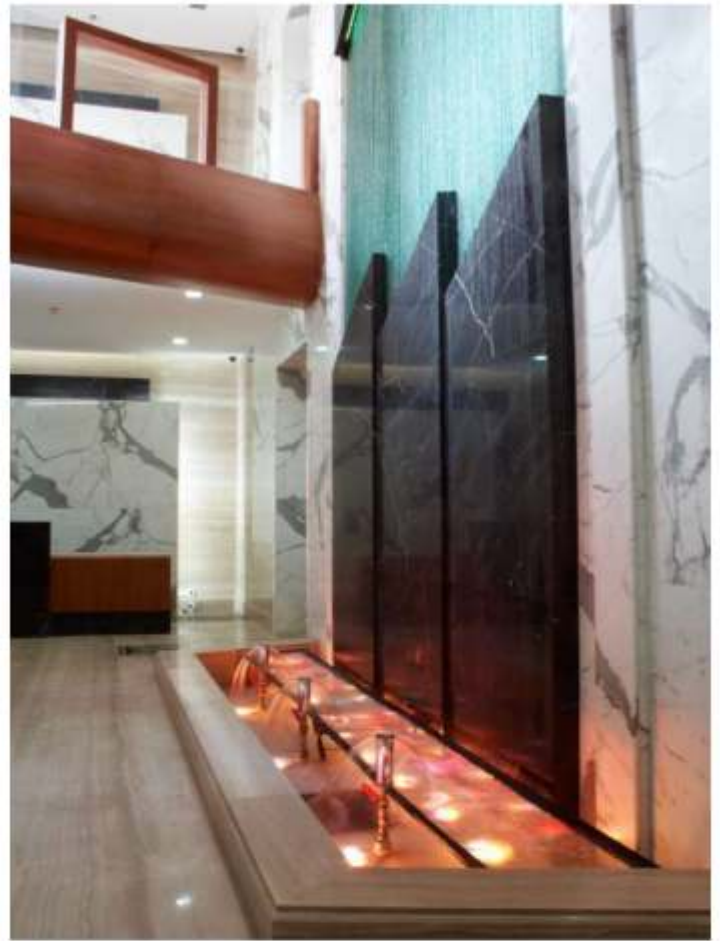
What strikes you first when you see a modern high-rise? Is it the sleek curtain walls or the advanced materials that define its form? High-rise structures are the epitome of the evolving architecture of the 21st century, shaping skylines like never before. These structures, with their iconic silhouettes and contemporary touches, have crafted cities of the future. Yet, one can't help but wonder: are these contemporary structures overlooking the essence of tradition and heritage? Exploring this concept, **Ar. Nirmala Banaji**, Principal Architect at **Banaji & Associates**, tries to embrace this in her structures. From integrating jaali patterns to traditional materials, her designs try to bridge the gap between the past and the present.

To integrate heritage into modern buildings, it is essential to understand the essence of history and culture. Our century-old forts have unique architecture that narrates the evolution of civilizations through built form. Preserving these structures is about respecting the knowledge, values, and skills that built them. As cities modernize, heritage buildings act as tangible links to cultural memory, offering lessons in spatial design and contextual harmony.



In contrast, high-rises represent humanity's vertical ambition-monuments of engineering that symbolize economic growth and technological advancement. These glass-and-steel titans dominate modern skylines, reflecting innovation and power. But how can we make these towering forms more livable, meaningful, and rooted in history? The answer, we argue, lies in drawing from the humility and depth of heritage architecture. At Banaji & Associates, we increasingly view heritage as a reference point-a design foundation to build upon. These elements guide the contemporary pursuit of sustainability and spatial harmony.

Our modern cities, like Jaipur and Kochi (Ernakulam), are living examples of high-rise buildings embedded in cultural contexts. They showcase how the old and the new can coexist, enhancing each other's value. Adaptive reuse projects-transforming palaces into hotels, mills into museums, and havelis into community centers-are bridging the temporal gap. Similarly, Hill Court in Bandra draws inspiration from the Art Nouveau style, with curved facades & spiral staircases, elevating the essence of modern buildings. Such projects demonstrate that high-rise development can amplify it through thoughtful spatial planning and urban strategy.



The 21st century offers us a unique opportunity: to merge ancient principles with digital precision. Parametric tools now allow for complex facades that echo traditional patterns. 3D printing is reviving lost architectural forms. Moreover, AI and data analytics are helping planners understand historical site behaviors, informing better design decisions. In this confluence, technology is empowering architects to reinterpret it for the future.

The journey from heritage to high-rise is a tale of continuity. In the reflections of modern times, we see a renewed appreciation for the lessons of the past and a responsible vision for the future. By this, she concludes, "Buildings are witnesses to the human spirit." Let those witnesses speak in many voices, of heritage and of the evolving genius that





Action Services Group Unveils Emergency Preparedness Lighting Solutions

Action Services Group, a national leader in commercial lighting, electrical, and signage solutions, is pleased to announce the official launch of its Life Safety Lighting Services, a critical new offering designed to help businesses meet code compliance, improve occupant safety, and ensure business continuity during power outages or emergencies.

With heightened scrutiny of OSHA, NFPA, and municipal fire code regulations, businesses across the United States are looking for dependable partners to install and maintain compliant emergency lighting systems. Action Services Group's Life Safety Lighting Services offer comprehensive support, from audits and inspections to installation, testing, and continuing maintenance, adapted to the changing needs of commercial establishments such as big box stores, hospitality and warehousing.

The debut coincides with a growing need for facility solutions that go beyond standard lighting maintenance. Many firms ignore the necessity of regular functional testing and adequate emergency fixture placement, both of which are essential components of Action Services Group's service model.

Philips Interactive 3000 Series Launched by PPDS

PPDS, the global provider of Philips Professional Displays and solutions, has introduced a reinvented Philips Interactive 3000 series with improved design, features and software.

The series is designed for a wide range of market verticals where color quality and visual sharpness are critical to the viewing experience, according to a press statement.

The Philips 3000 Series is an update to the popular Philips T-116 | June 2025 | Architectural & Builders Magazine



Line Kiosk display range that has been redesigned to reflect market feedback and configured with the most recent advancements in hardware, PCAP touch technology and software.

The Philips T-Line Series has pushed the boundaries of how and where interactive displays may be used to deliver new business benefits and better user experiences.

The series, which is available in 24, 32, 43 and 55-inch model variants, has been modified to allow for 24/7 operation. All models now have a 30-degree tilt option, as well as optional open frame brackets, which expands installation options and increases creativity.

LG And Brightsign Collaborate, Introduces Integrated Digital Signage Solution

LG Electronics USA and BrightSign LLC have announced a collaboration that will result in a new generation of LG ultra high definition (UHD) digital signage displays running BrightSignOS. These displays will be offered to clients in the United States in the second quarter of 2025, followed by international markets.

The new LG 49-, 55-, and 65-inch UV5N series models will run the dependable BrightSignOS on LG's powerful embedded system-on-a-chip (SoC) multi-core processor. These displays are intended to alter content distribution and provide a diverse set of BrightSign partner content management system (CMS) options. They serve a variety of vertical markets, including transportation, retail, museums, hotels, corporate, education, and healthcare. Businesses across industries are looking to take control of their content, create engaging consumer experiences, and maximize the potential of signage applications. These true-integration signage solutions give end users real-time access to both BrightSignOS and the display.

Technogym Launches in India



Technogym, an Italian brand, has set the global benchmark in fitness and wellness since its inception in 1983. From a garage to the world, founder Nerio Alessandri began creating innovative equipment in his family garage. Today, the brand is the preferred choice for elite athletes, world-class fitness centres, and discerning wellness enthusiasts worldwide, renowned for its exceptional craftsmanship, cutting-edge technology, and unmatched quality.

Technogym's pursuit of innovation and design excellence has earned it prestigious accolades such as the iF Design Award, Good Design Award, and Red Dot Design Award, celebrating its unique ability to blend visionary design with superior functionality. As the Official Supplier to 9 Olympic Games, including the Paris Olympics & Paralympics in 2024, the brand further solidifies its global leadership in fitness and wellness.

Building on this legacy, Technogym recently introduced 'Healthness' - a pioneering approach that pushes the boundaries of wellness into the realm of preventative

health. Backed by decades of research and data from over 25 million users, Healthness leverages artificial intelligence to offer precision training programs tailored to individual needs. Recognizing that up to 80% of our health outcomes are shaped by lifestyle rather than genetics, Technogym's solutions aim to enhance longevity, cognitive ability, and physical performance through intelligent, personalized routines.

Thanks to trillions of data points collected over 30 years on the Mywellness Open Platform, Technogym now offers Healthness as both products and services. The AI-powered Technogym Checkup assesses psycho-physical and cognitive parameters to generate precision training programs automatically. The AI-based Biostrength and Biocardio product ranges, connected through the Technogym Ecosystem, deliver adaptive training programs via the Technogym App, tracking progress and adjusting routines in real-time.

Marking a significant milestone, Technogym has made its grand entry into the Indian market, offering cutting-edge fitness solutions to a rapidly growing health-conscious audience. With a core philosophy of "exercise as medicine," the brand combines artificial intelligence, biomechanics, and ergonomic design to create a comprehensive wellness experience. Technogym's products go beyond traditional fitness equipment, enhancing training, recovery, and overall well-being. With over forty years of expertise in human movement, the brand designs equipment that optimizes muscle activation while preserving biomechanics, ensuring safety and effectiveness. Whether for luxury home gyms or commercial fitness centres, Technogym's solutions cater to all levels, from elite athletes to those with specific health needs.





Page No. 74



Page No. 82



Page No. 97



Page No. 106



Page No. 24



Page No. 25



Page No. 98



Page No. 52



Page No. 73



Page No. 34



Page No. 40



Page No. 36



Page No. 85



Page No. 50



Page No. 57



Page No. 54



Page No. 30



Page No. 84



Page No. 42



Page No. 114



Page No. 86



Page No. 90



Page No. 32



Page No. 96



Page No. 72



Page No. 96



Page No. 56



Page No. 86



Page No. 86



Page No. 41



Co-Extrusion Teak Deck - Specialist Spreads for your Outdoors.

Ahmedabad +91 79 4006 0521 / 78782 10126 Bengaluru +91 80 41101012 / 13
 Bhopal +91 82913 17558 Bhubaneshwar +91 96742 23380 Chennai +91 44 4550 8411 / 12
 Goa +91 832 243 7663 Guwahati +91 97486 65777 Hyderabad +91 91009 82522
 Indore +91 73045 55948 Jaipur +91 141 492 2396 / 82919 52996 Kochi +91 484 485 6173
 Kolkata +91 33 4060 4243 Mumbai +91 22 4047 6211 New Delhi +91 11 4052 5767
 Patna +91 93300 93003 Pune +91 20 400 1630 Surat +91 97237 77887
 sales@squarefoot.co.in ■ www.squarefoot.co.in ■ Follow us on   

SquareFoot™
 Experience Floors!

Laminate Wood Floors | Engineered Wood Floors
 Solid Wood Floors | Design Wood Floors
 Outdoor Wood Floors | Vinyl Floors
 Sports Floors | Carpets

THE ULTIMATE HUB FOR ARCHITECTS & INNOVATORS



ARCH EX
THE ARCHITECTURAL EXPO

PARADE GROUND, SEC-17

13 - 16 - FEB

CHANDIGARH - BOOK YOUR STALL NOW

Expand Your Network with

250+
Exhibitors

600+
Brands

30,000+
Trade Visitors

7000+
Dealers &
Distributors

4000+
Architect &
Interior Designers

10+
Industrial
Association



CONTACT :- +91 70092 18187

ROSHAN RAKHE INDIA (ILLUMINATING CINEMA)

- One Stop Lighting Solution for Cinema / Multiplex / Auditorium / Home Theater.
- ILLUMAX- A Leading Manufacturer & Supplier For Cinema & Auditorium Lighting, Across India & Abroad.

We have 4 Models in StepLights :



Regular Model Steplight



Dual Line Premium Model Steplight



Front Mount Steplight



Regular Plus Model Steplight



ILLUMINATION INDIA

Unit No. 115, B-Wing, 1st Floor, Nidhi Industrial Complex,
Near Visava Hotel, Opp. Agarwal Ind. Estate, Vasai (E),
Sativali Road, Vasai, Maharashtra 401208.

Contact No. 9920262527 / 9870891111
Email : naveen@illumax.in / anikt.s@illumax.in
Website : www.illumax.in / www.illumaxindia.com

Box Type / Laser Engraved Safety Signages



Star Galaxy effect in Ceiling for Home theater / Children Room / Meditation Room & also in Swimming pool base with F. Optic



**Don't Settle For Ordinary
Choose Smart!
Choose AceTech**



**ACETECH - Asia's Largest Exhibition on
Architecture, Design & Interior Products.**

Architectural & Builders Magazine | **Blitz Media**

We are the Media Channel Partner
For the Stall Booking in the
ACETECH - EXHIBITION
For the coming year 2025-2026

**Plan & Book Your Stand Space Today!
For Better Business!**

For Booking the Stall Space

**Contact: Vishal - 9594301666
Email ID: vishal@blitzmedia.in**

BLITZ MEDIA PRIVATE LIMITED
411 - Omkar Prathna, Koldongri Sahar Road
Vijay Nagar, Andheri (E), Mumbai - 400069
Mob: 7700077932 Web: www.blitzmedia.in



Publisher
Blitz Media

ADVERTISERS INDEX

Assa Abloy Opening Solutions (I) Pvt. Ltd.	TGF
Smartnode Automations Pvt.Ltd.	IFC
Supreme Creation.	1
Weather Cool Sales Pvt. Ltd.	3
Kingspan Jindal Pvt.Ltd.	4
Seetu Orbit Cable (I) Pvt. Ltd.	5
Vantage India Pvt. Ltd.	6
K-lite Industries.	7
JSW Cement Ltd.	9
Rochana Industries Pvt. Ltd.	10
Kuboz Arc Pvt. Ltd.	11
Taiton Hardware Pvt. Ltd.	12
Vinyork Leather Works.	13
Ozone Overseas Pvt. Ltd.	17
V- Can Furnitech Pvt. Ltd.	18
Saint - Gobain India Pvt. Ltd.	19
Crompton Greaves Consumer Electricals Ltd.	21
Marmo Solutions Pvt. Ltd.	TAB
AB Designs Enterprises.	27
Vyoma Exim Pvt. Ltd.	29
The Supreme Industries Limited.	33
Kriti Industries India Limited.	39
Mozart Vitrified Pvt. Ltd.	TAB
Buildon Plaster Pvt. Ltd.	43
Entity Minerock LLP.	45
Everest Industries Ltd.	47
The Tata Power Company Limited .	TAB
Scheider Electric India Pvt. Ltd.	TAB
Kich Architectural Products Pvt.Ltd.	61
Geze India Private Ltd.	65
Mitsubishi Electric India Pvt.Ltd.	TAB
Jyoti India Kitchen Sink Pvt. Ltd.	79
Hella Infra Market Pvt. Ltd.	TAB
Omfurn India Limited.	TAB
Range -Lite LLP.	93
Aditya Interiors.	95
Chair NX.	TAB
TK Elevator India Pvt. Ltd.	105
Danshi Enterprise.	TAB
Illumination India.	TAB
Wadbros Imports & Exports.	123
Bestone Impex.	127
Bonton Technomake Pvt.Ltd.	128
Eurotech Design Systems Pvt.Ltd.	IBC
Kuche 7 Manufaching Pvt. Ltd.	OBC



Architectural Builders
Magazine

SUBSCRIBE TODAY

India's First B2B Quarterly Architectural Builders Magazine

ABM Subscription Form:- Yes! I would like to subscribe for



1 YEAR (4 ISSUES) ₹ 1600/-

2 YEAR (8 ISSUES) ₹ 3000/-

3 YEAR (12 ISSUES) ₹ 4500/-

www.abmmagazine.in

SUBSCRIPTION ORDER

Enclosed is My Cheque / D.D. No.....for Rs.....

Dated.....Drawn on.....

I am enclosing my cheque / draft in favour of BLITZ MEDIA PVT. LTD.
₹ 100/- Extra for out station cheque

Name.:_____

Job Title.:_____

Company Add.:_____

City.:_____ Pin Code.:_____ State.:_____

Tel. No.:_____ Email:_____



For Magazine Subscription

Signature Designation

Stamp

Kindly send the duly filled form along with the relevant amount by cheque / DD



DANISH ENTERPRISE



DAB D-arc BUILD



WadBros



ILLUMAX



ARCH EX



REFLECT

Architectural
Builders
Magazine

BLITZ MEDIA PRIVATE LIMITED

411, Omkar Prathana, Koldongri Sahar Road, Andheri (E), Mumbai - 400069

Mobile: +91-9967487952 | Tel: 7700077932 | E-mail: info@blitzmedia.in

For Magazine Subscription / Editorial Coverage / Advertisement
Please Contact Vishal Mobile: 9594301666 Email: vishal@blitzmedia.in



Teeter C

WadBros®
German Standards
Designer Ventilation Fans

Royal Series

BPT Series

Inline Duct Fan WAD / IL Series

STORM - BLDC Heavy
Duty Ventilator

Magic Fan

ERV (Energy Recovery Ventilator)

Crafted for a Class Apart

Contact: +91 85919 87597

Instagram @wadbrosofficial Facebook wadbrosofficial Website www.wadbros.com



INDIA'S LEADING
**DESIGN, ARCHITECTURE, BUILDING
& CONSTRUCTION MATERIAL EXHIBITION**



D-arc BUILD EXPO: Shaping the Future of Design & Construction

Experience the next wave of innovation in Design, Architecture, Engineering and Building Materials at D-arc BUILD, curated by Zion Exhibitions. Mark your calendars:

- June 20,21,22 2025 – BIEC, Bengaluru
- August 29,30,31 2025 – Pragati Maidan, New Delhi
- April 17,18,19 2026 – NESCO, Mumbai



What to Expect?

- 6 Dedicated Arenas including Ultra Luxe, Start Up, Rapid Construction, Design & Décor, A.I. & 3D and Smart Home.
- 17+ Knowledge Conferences with IIA, IIID, NAREDCO, ISOLA, and others.
- 100+ leading National & International Brands.
- The Maestro Award – honouring in 17+ design & architecture categories.
- D-arc Next Gen – a competition for young architects & designers.
- D-arc Design Street – a hub for creative art installations and visibility.





INDIA'S LEADING DESIGN, ARCHITECTURE, BUILDING & CONSTRUCTION MATERIAL EXHIBITION

20.21.22 JUNE | 2025

BENGALURU | BIEC

29.30.31 AUG | 2025

DELHI | PRAGATI MAIDAN

17.18.19 APR | 2026

MUMBAI | NESCO



**BOOK YOUR
SPACE NOW**



**REGISTER
NOW**

Corporate Office: Zion Exhibitions India LLP, 124-130, 1st Floor, Splendor Forum, Jasola, New Delhi-110020
Branch Office: Lewis Techpark, 1B, Miller's Road, Nandidurga Road, Benson Town, Bengaluru - 560046
Mob.: +91 96503 80303, 99998 44747 | Tel: 011-66708500 | RSVP TO: +91 81020 00014
E-Mail: info@zionexhibitions.com | Web: www.darcbuild.com | Follow us:    

Organized By
ZION
EXHIBITIONS
Reinventing Exhibitions



Discovering the Timeless
Beauty of Natural Marble

The
ART
of
EARTH

Reconnect with the
earth.

it whispers the quiet
elegance of nature's
finest work

650+
VARIETYS

45+
COUNTRIES

Head Office:

C1, Ring Road, Rajouri Garden,
Dist. New Delhi-110027 INDIA.

Contact : +91-9643107016

BESTONE IMPEX
Designed to Suit your lifestyle

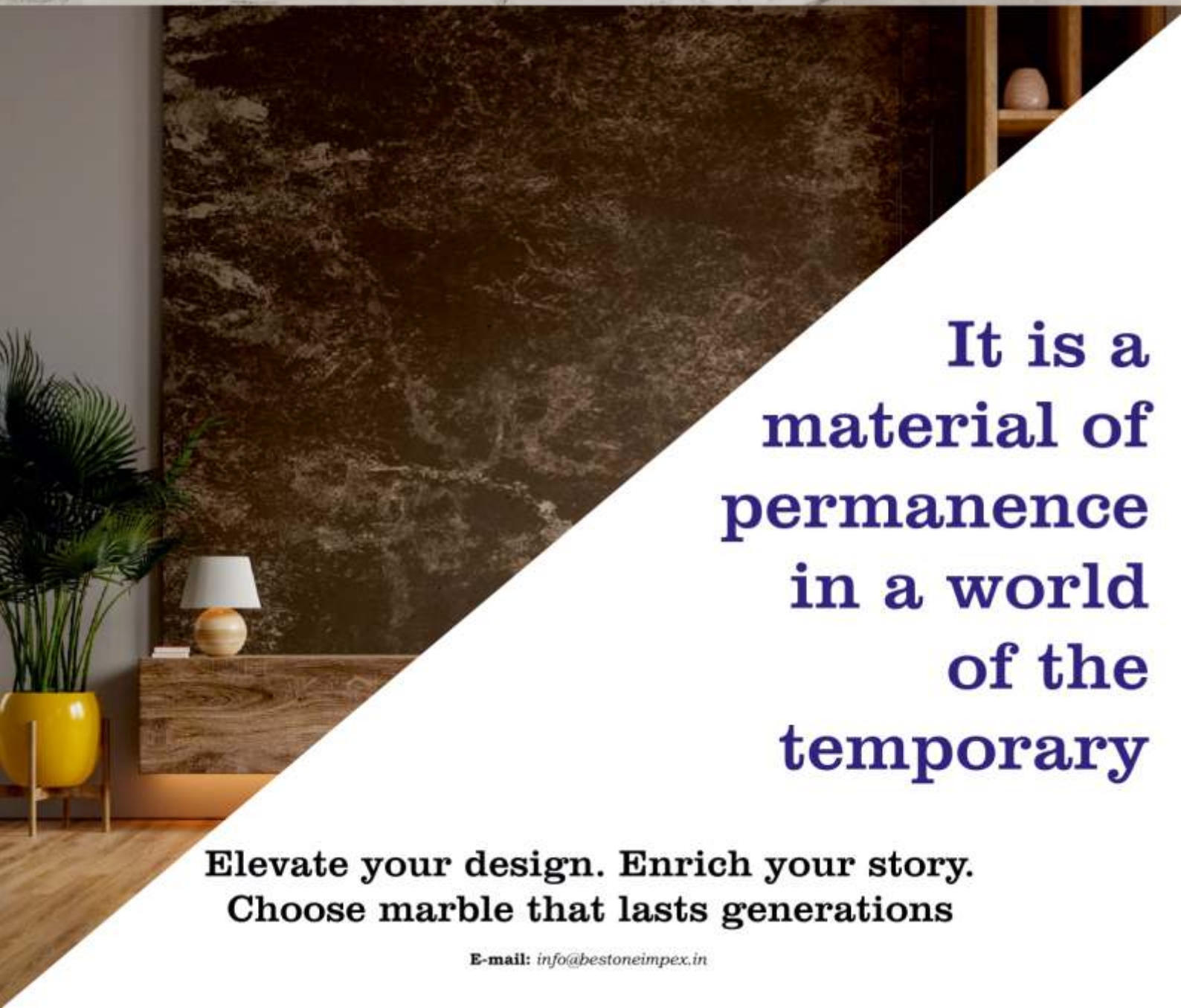
Experience center

D-208, Ring Road, Mansarovar Garden,
New Delhi - 110015

WEB: www.bestoneimpex.com | **CUSTOMER SUPPORT:** +91-11-25161132 **Follow us on**     



***True luxury
begins with
timeless materials***



**It is a
material of
permanence
in a world
of the
temporary**

**Elevate your design. Enrich your story.
Choose marble that lasts generations**

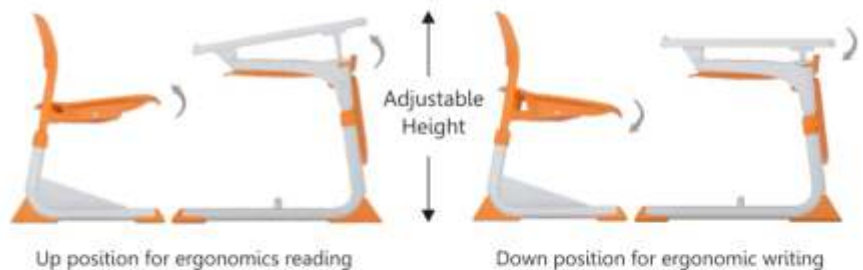
E-mail: info@bestoneimpex.in

Berkeley
elevate your child's learning space

bonton
FURNITURE SOLUTIONS



Ergonomic Design | Active Seating | Adjustable as Child Grows



Patent No. 298646

Designed in Italy, Manufactured in India for the world

Baldanzi & Novelli designers

Bonton Technomake Pvt. Ltd.

Indore 453332, (M.P.) Present in **36 Locations** across India also in **Nepal & Dubai**

Web : bontonfurniture.net, e-mail : info@bontonfurniture.net, Cell : +91 95222 74222

Bonton Products Available At



Bonton Website



DESIGN
EUROTECH

WHICHEVER WAY YOU LOOK AT IT,
THIS ONE GETS ALL THE ATTENTION.



LOOK 10

As agile as you are, Eurotech's 'Look 10' office chair is packed with performance. Incorporating up-to-the-minute spacecraft technology with the highest strength to weight ratio. Like a unique 'self-on'self' weave mesh. An all stainless steel back bar where it counts (not plastic or ordinary metal). A high tech new generation thermoplastic frame for stability and aesthetics. Auto and manual height adjustment handles. And a host of configurations in leather, faux leather, fabric and more. Eurotech's 'Look 10'. Look no further.

Eurotech Design Systems Pvt. Ltd.

A-179, MIDC, Khairane, Navi Mumbai 400 705.

Call: +91 99674 53731

Email: showroom@eurotechin.com | www.eurotechworld.com

DEALERS AND RETAILERS ENQUIRY SOLICITED



MUMBAI | AHMEDABAD | BENGALURU | DELHI | HYDERABAD | PUNE



The Revolution of **KITCHEN DESIGN**

Kitchens crafted out of 304 Food-Grade Stainless Steel

Our stainless steel kitchens are **pest-free, weather-proof, eco-friendly, and 100% recyclable** while still being incredibly aesthetic.

Our Presence :

Mumbai - Fort - Worli - Andheri | Ahmedabad | Surat | Vadodara | Bengaluru | Jaipur | Coimbatore | Chandigarh
Dubai | Hyderabad | Delhi | Indore | Chennai | Kolkata | Pune | Rajkot | Raipur | Kochi

Tel: +91 98177 76776

kuche7.com